

DRAWING INDEX

<u>SHEET #</u>	<u>SHEET TITLE</u>
AP101	CONTROL JOINT PLAN
API101	POOL PLAN, SECTIONS AND EQUIPMENT
API102	POOL SECTIONS AND DETAILS
API103	POOL DETAILS

This page left intentionally blank

Issued For:
BIDDING
XX MAR 2021
Not For Construction

[illegible]

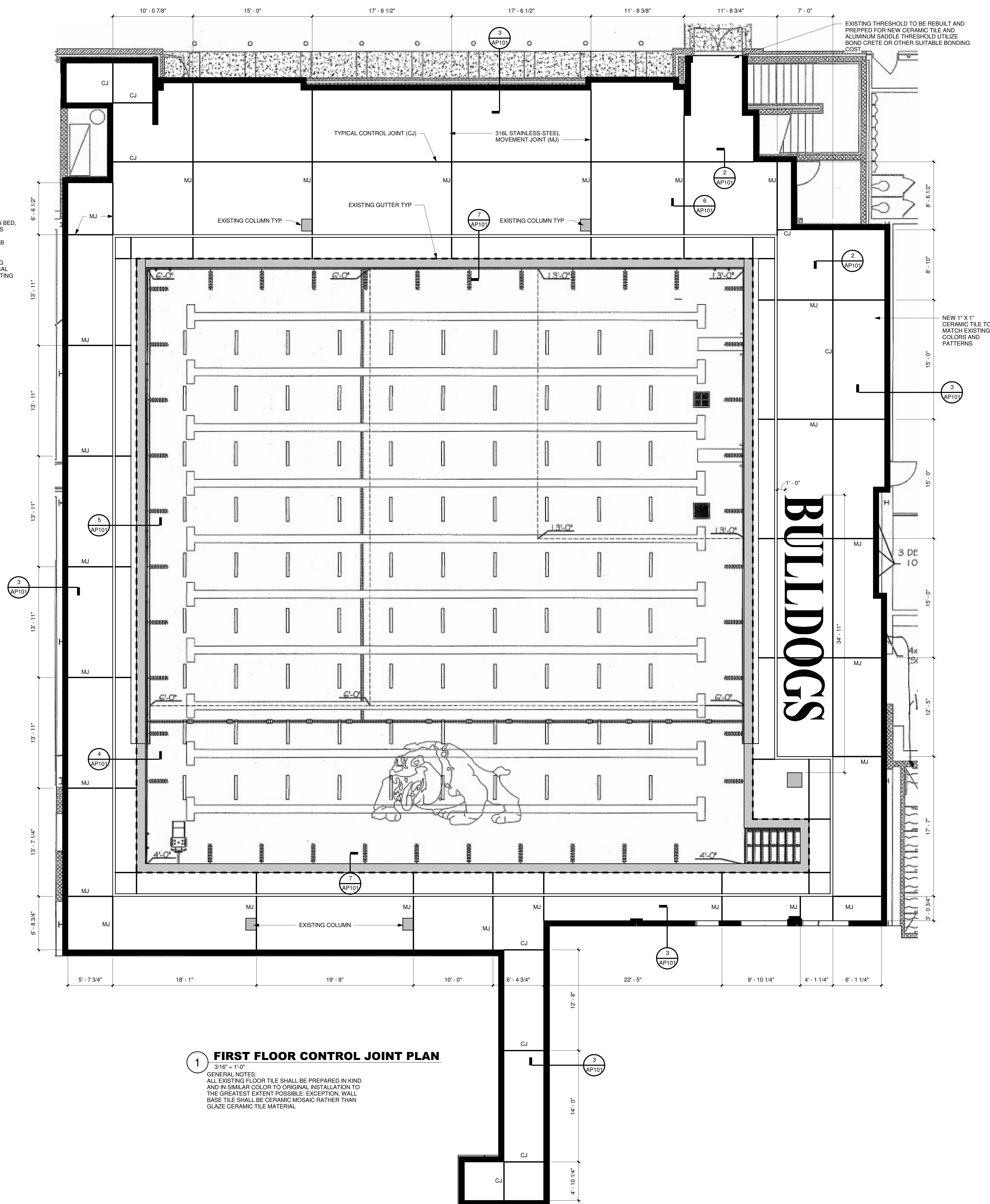
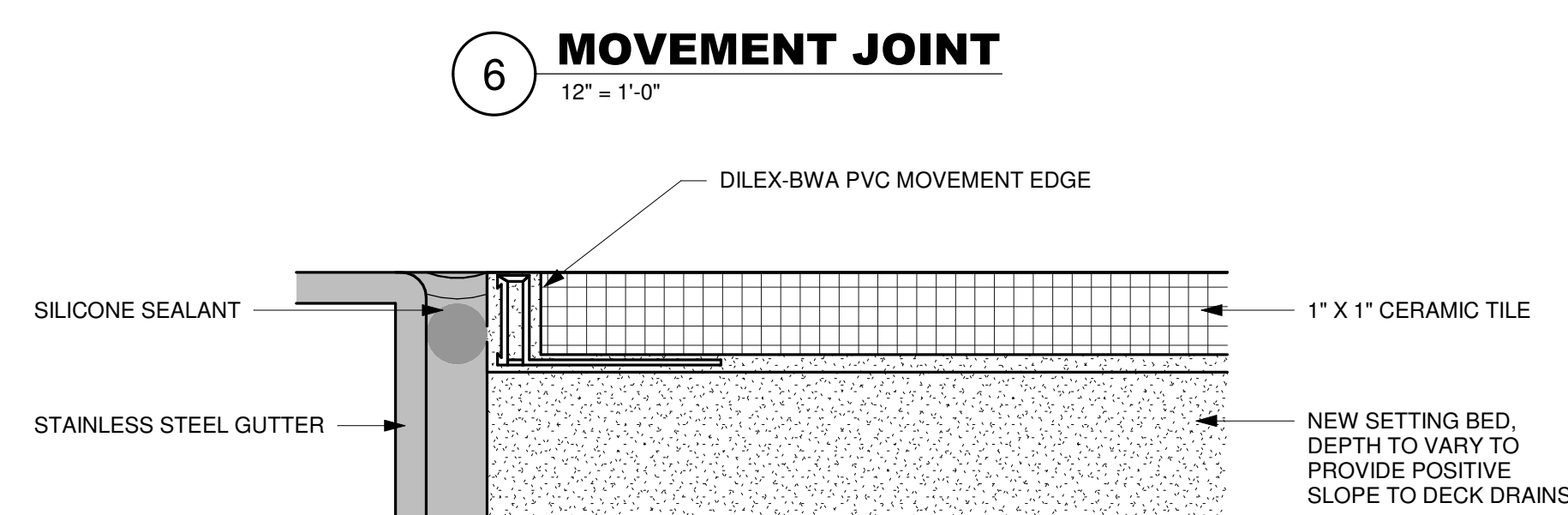
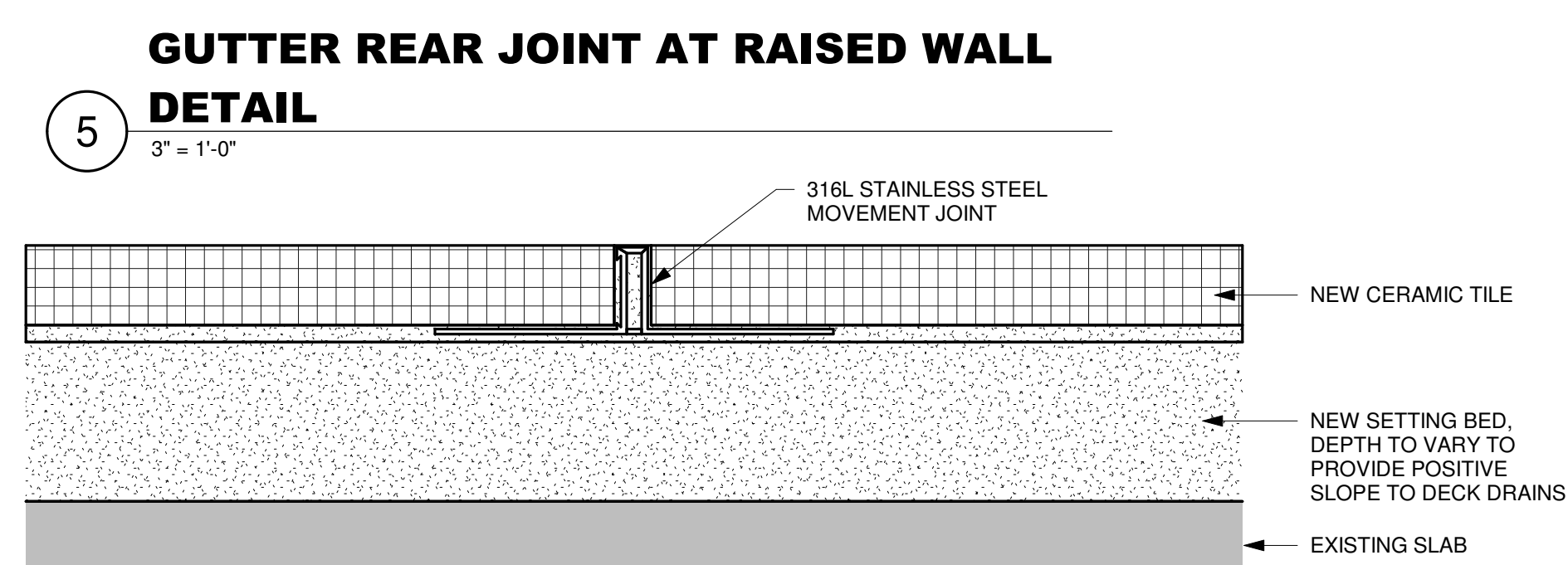
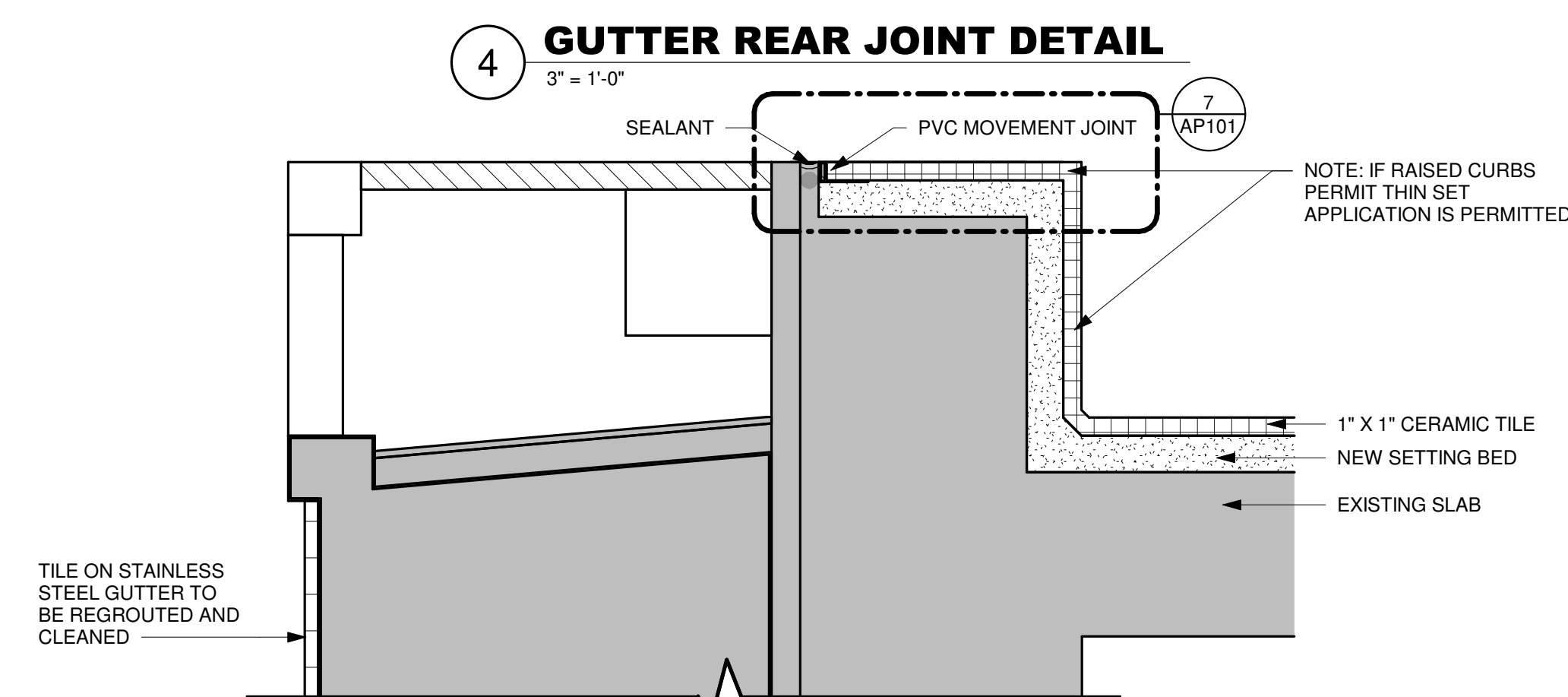
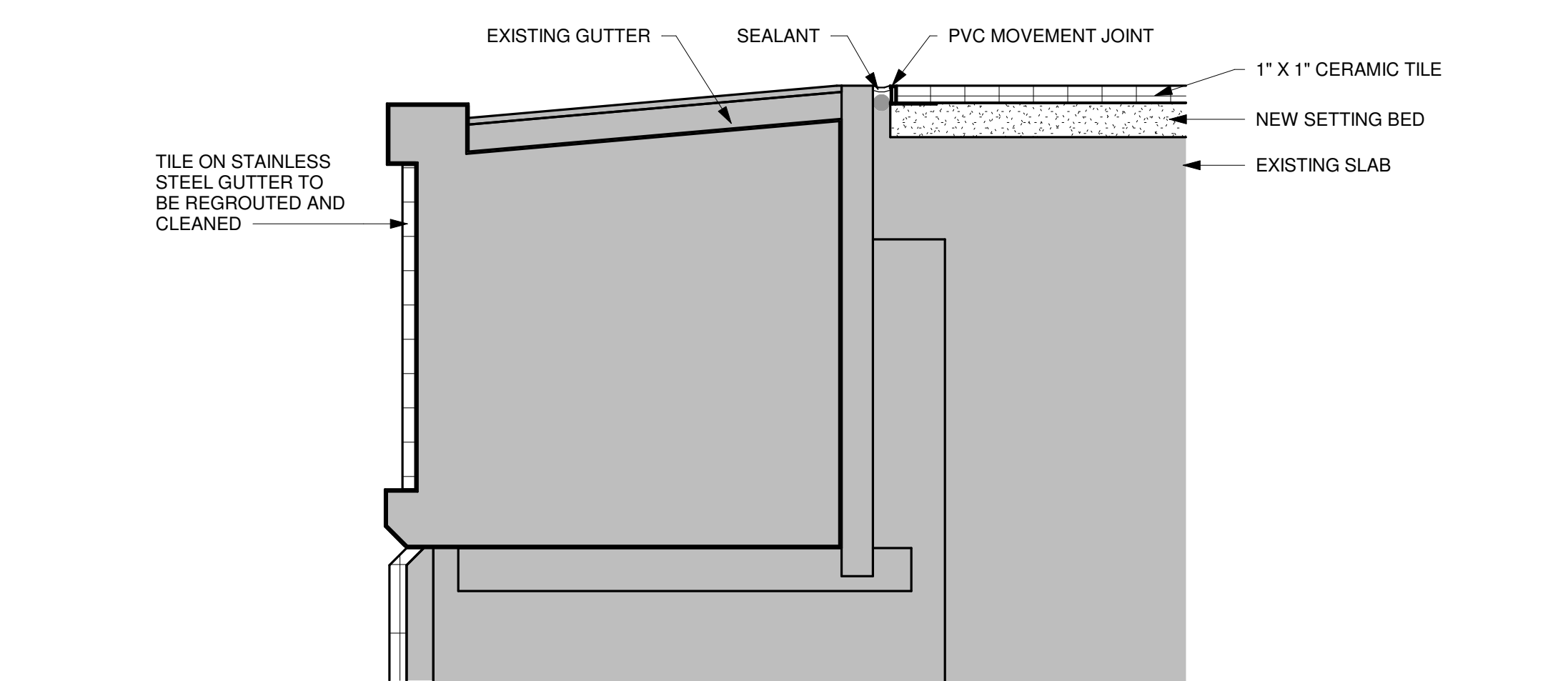
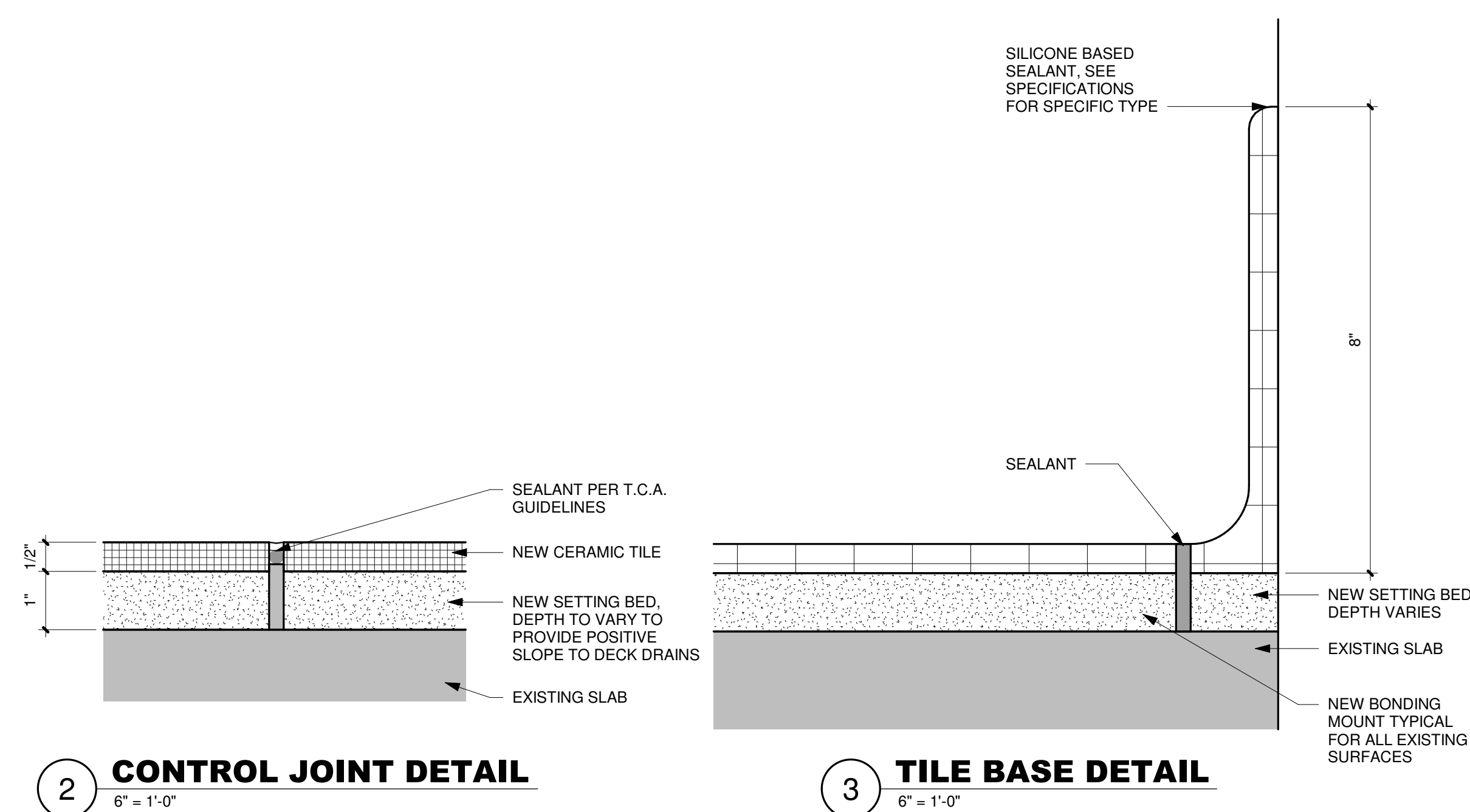
**AQUATIC FACILITIES
REHABILITATION
WILSON HIGH SCHOOL**

Wilson School District
2601 Grandview Boulevard
West Lawn, PA 19609

Project Number	20795
----------------	-------

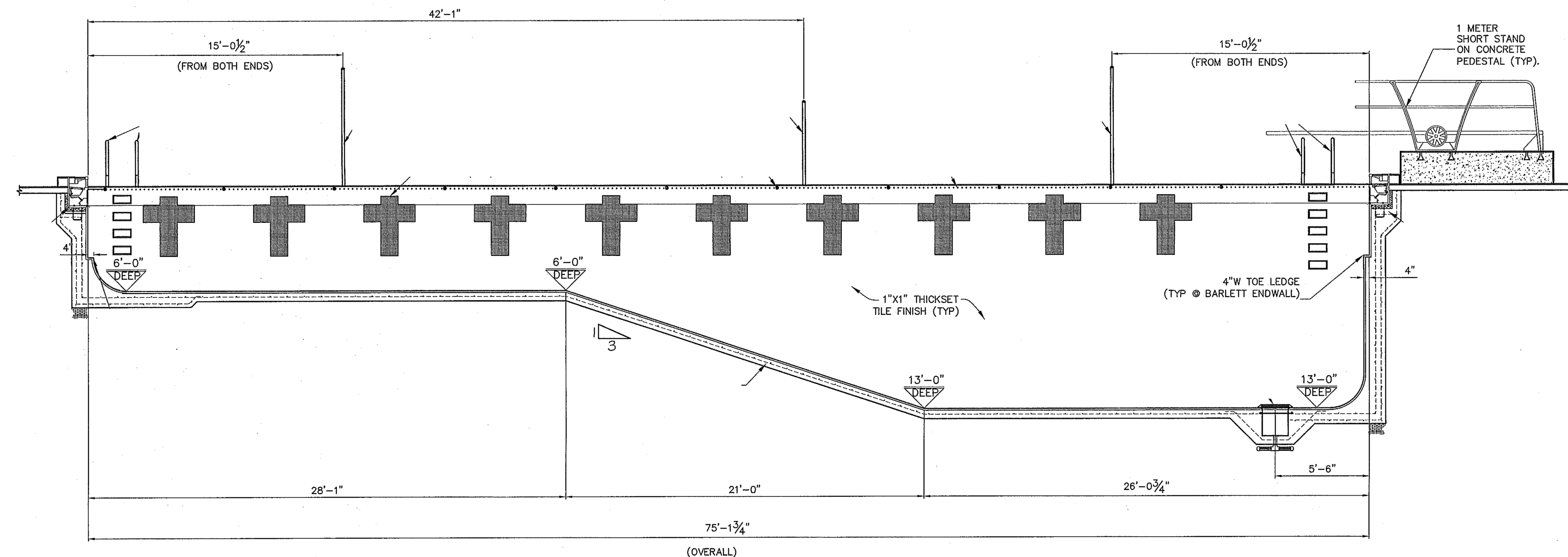
CONTROL JOINT PLAN

AP101

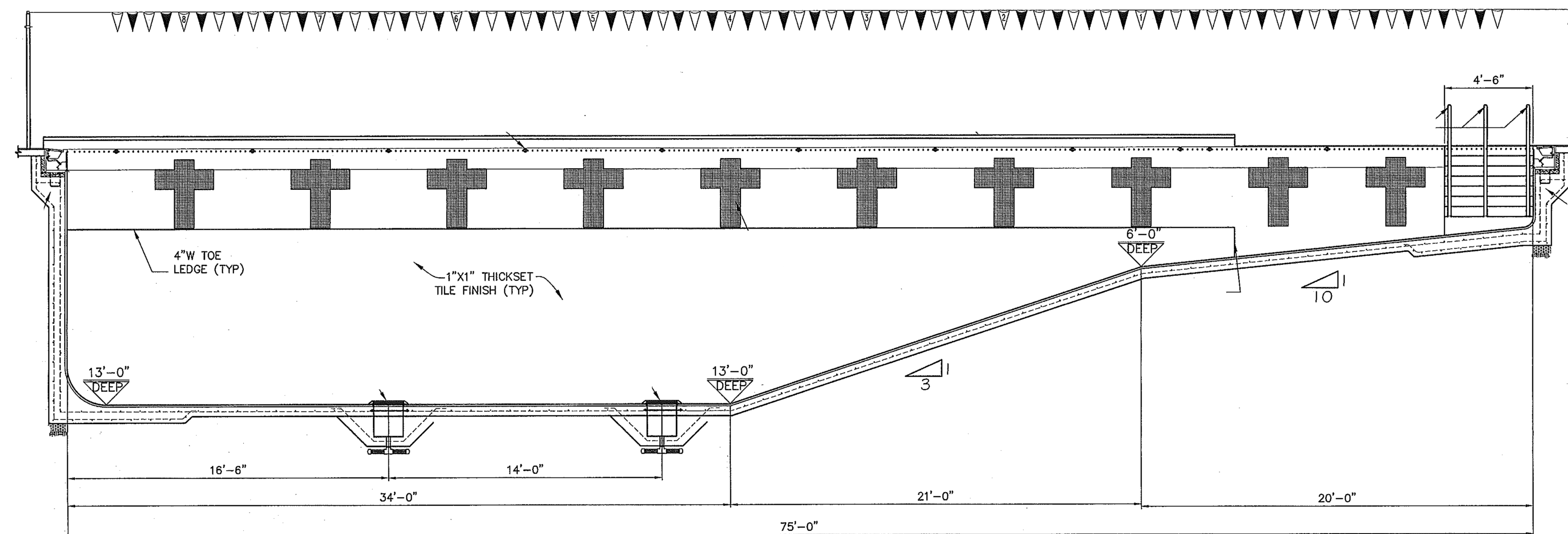


1 FIRST FLOOR CONTROL JOINT PLAN

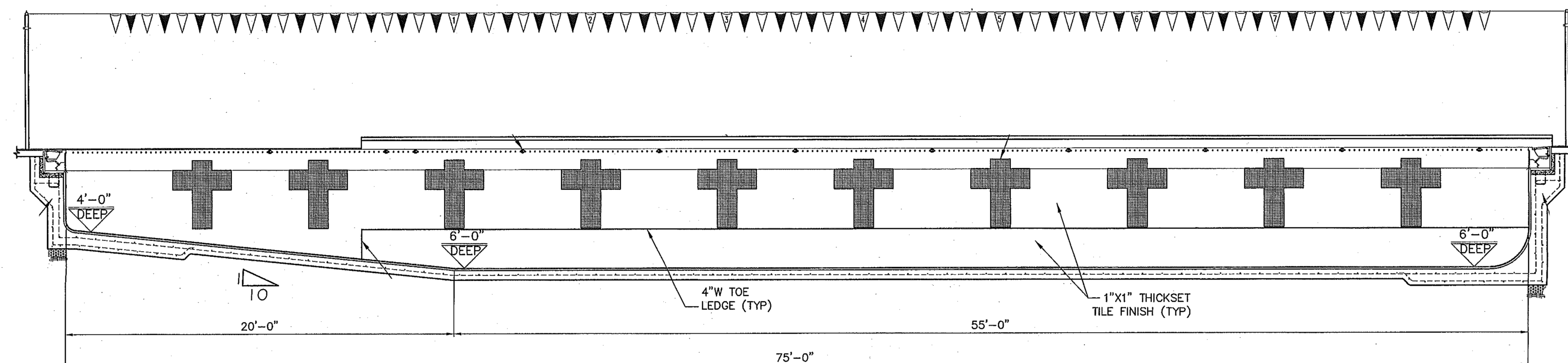
GENERAL NOTES:
ALL EXISTING FLOOR TILE SHALL BE PREPARED IN KIND
AND IN SIMILAR COLOR TO ORIGINAL INSTALLATION TO
THE GREATEST EXTENT POSSIBLE: EXCEPTION, WALL
BASE TILE SHALL BE CERAMIC MOSAIC RATHER THAN
GLAZE CERAMIC TILE MATERIAL



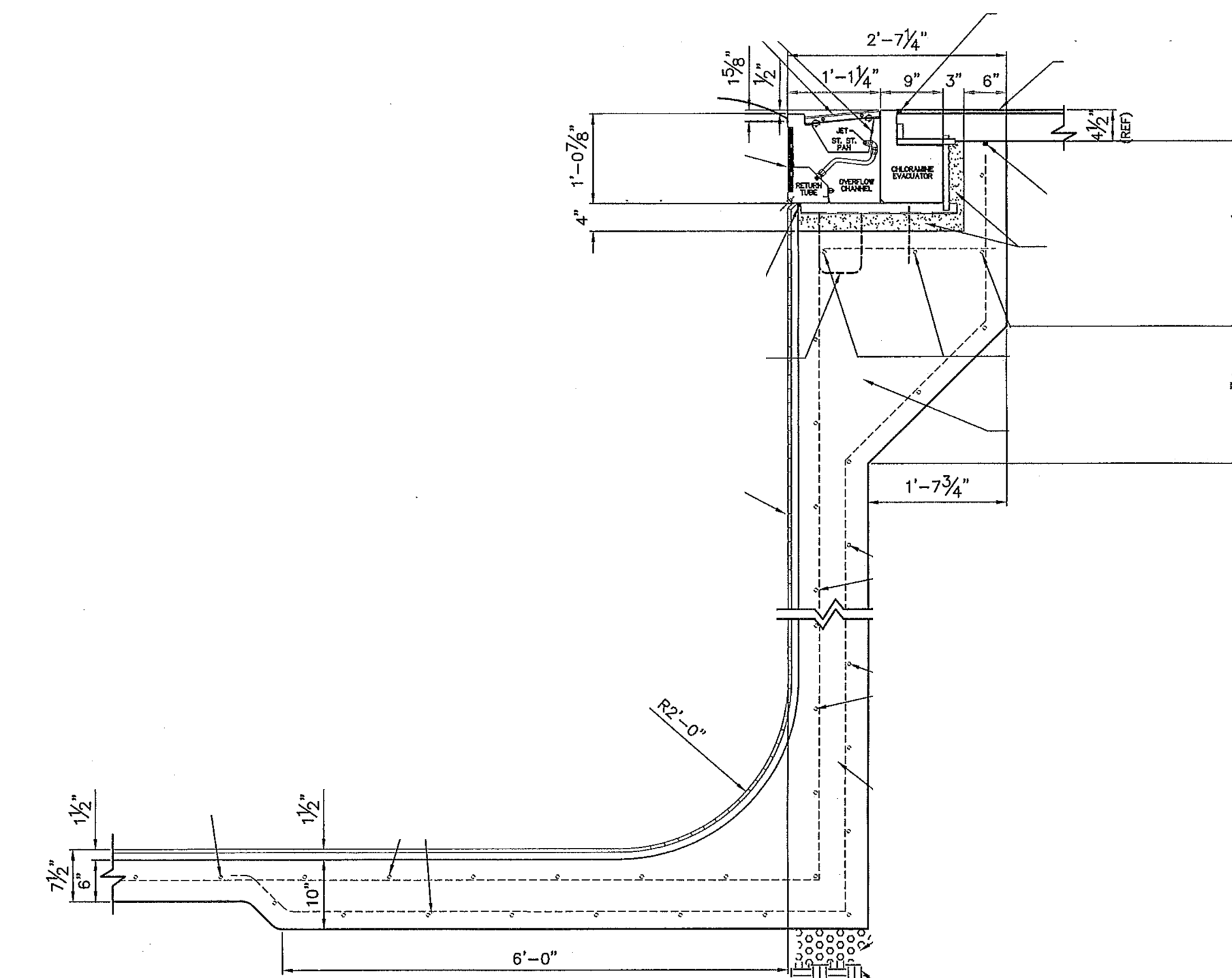
1 COMPETITION POOL SECTION A-A
SCALE: 1/4" = 1'-0"



2 COMPETITION POOL SECTION B-B
SCALE: 1/4" = 1'-0"

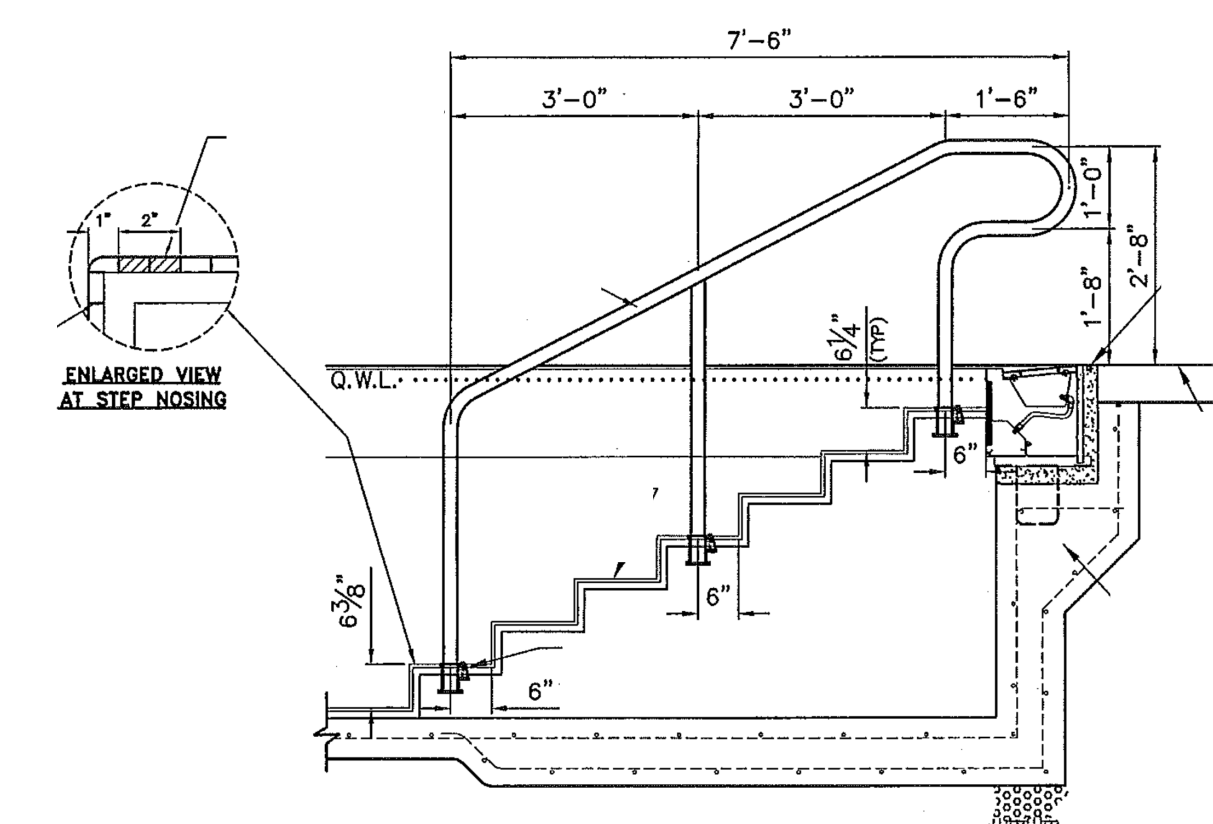


3 COMPETITION POOL SECTION C-C
SCALE: 1/4" = 1'-0"



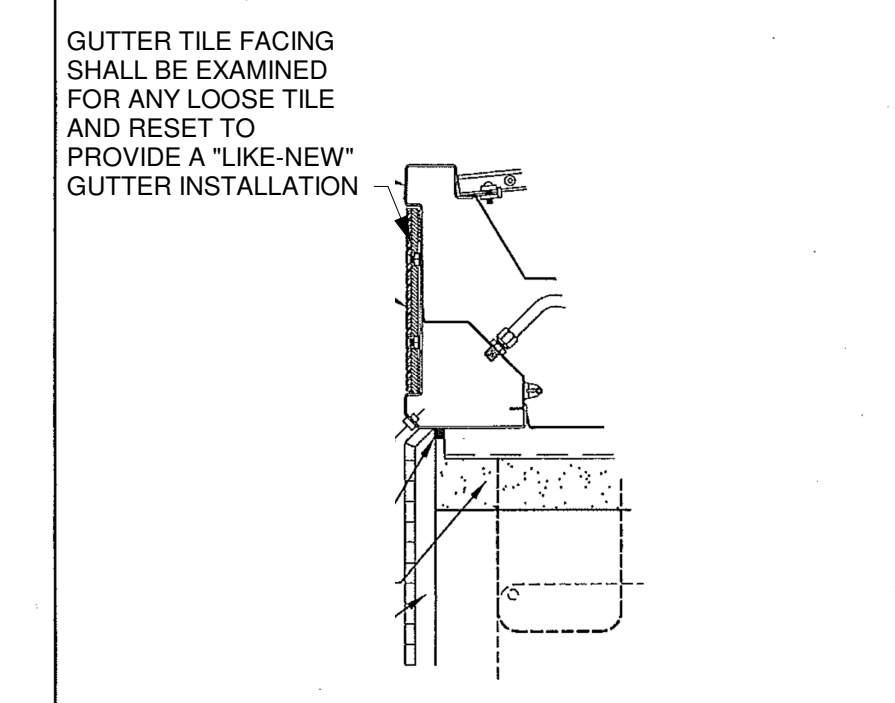
ALTERNATE # G4
4 EVACUATOR SIDE WALL SECTION DETAIL
SCALE: 3/4" = 1'-0"

FOR REFERENCE ONLY

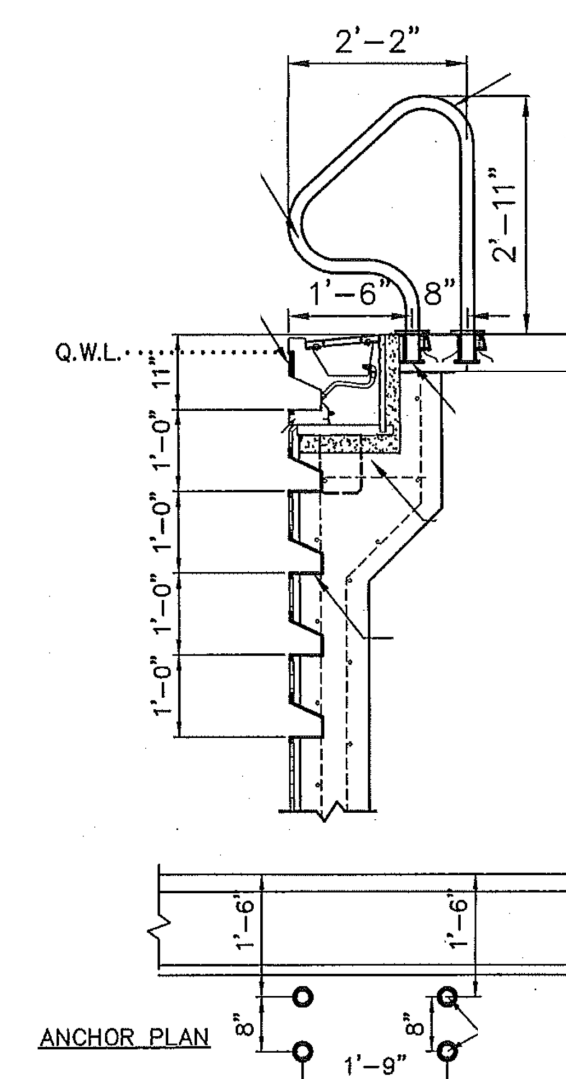


5 STEP/HANDRAIL SECTION
SCALE: 1/2" = 1'-0"

FOR REFERENCE ONLY



6 GUTTER CAULK JOINT DETAIL
SCALE: 1-1/2" = 1'-0"



7 RECESSED STEP/GRABRAIL DETAIL
SCALE: 1/2" = 1'-0"

FOR REFERENCE ONLY

THIS ORIGINAL DRAWING IS FURNISHED FOR THE PURPOSE OF IDENTIFYING TOTAL AREA OF CERAMIC TILE CLEANING AND REGROUTING. ANY LOOSE TILES SHALL BE RESET PRIOR TO REGROUTING. ANY LOOSE OR MISSING TILE IN THE GUTTER SHALL BE RESET UTILIZING EPOXY-BASED SETTING BED AND REGROUTED.

Issued For:
BIDDING
XX MAR 2021
Not For Construction

RELEASED		
No.	Description	Date

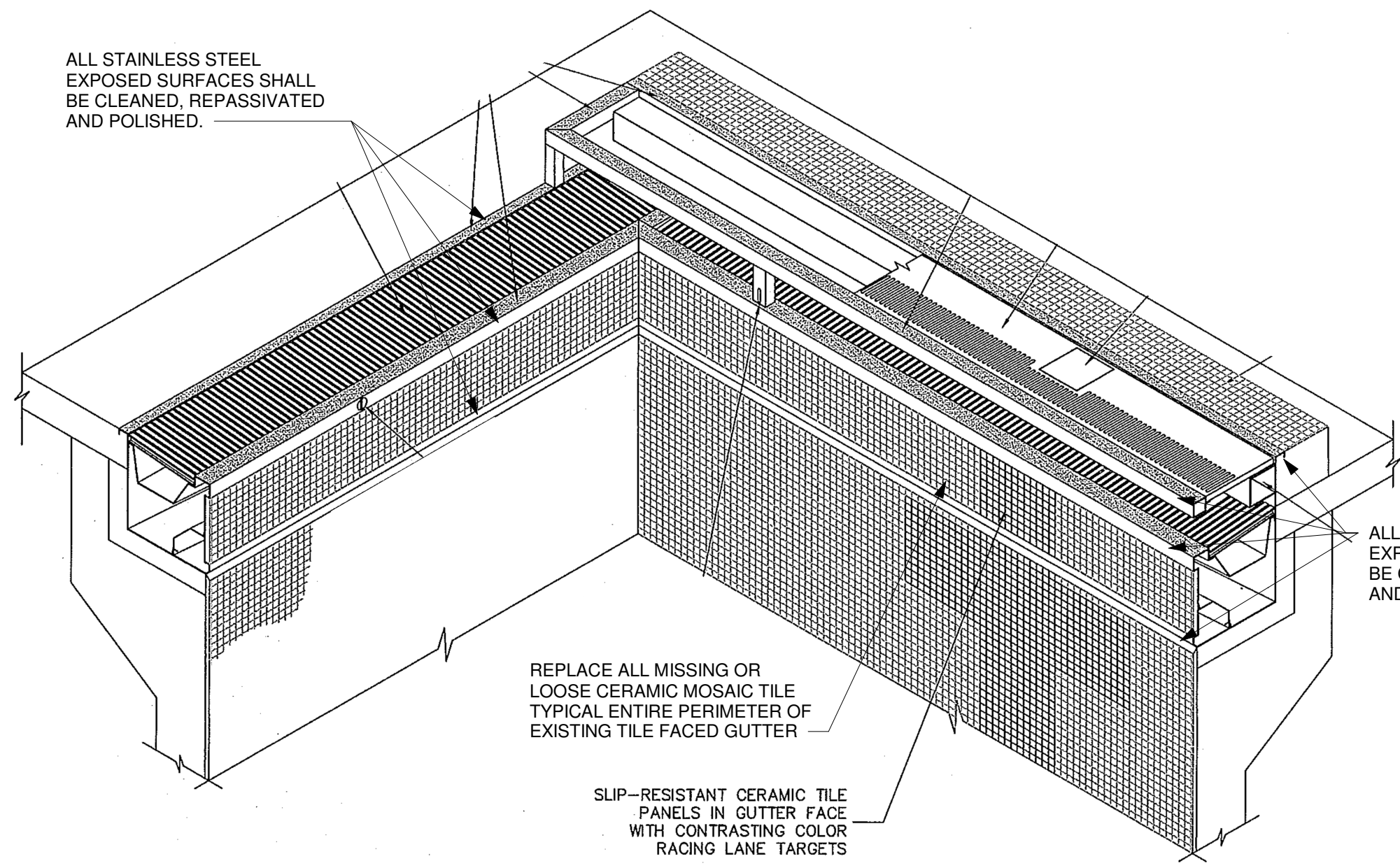
**AQUATIC FACILITIES
REHABILITATION**
WILSON HIGH SCHOOL
Wilson School District
2601 Grandview Boulevard
West Lawn, PA 19380

Project Number 20795

**POOL SECTIONS AND
DETAILS**

API102

ALL STAINLESS STEEL EXPOSED SURFACES SHALL BE CLEANED, REPASSIVATED AND POLISHED.

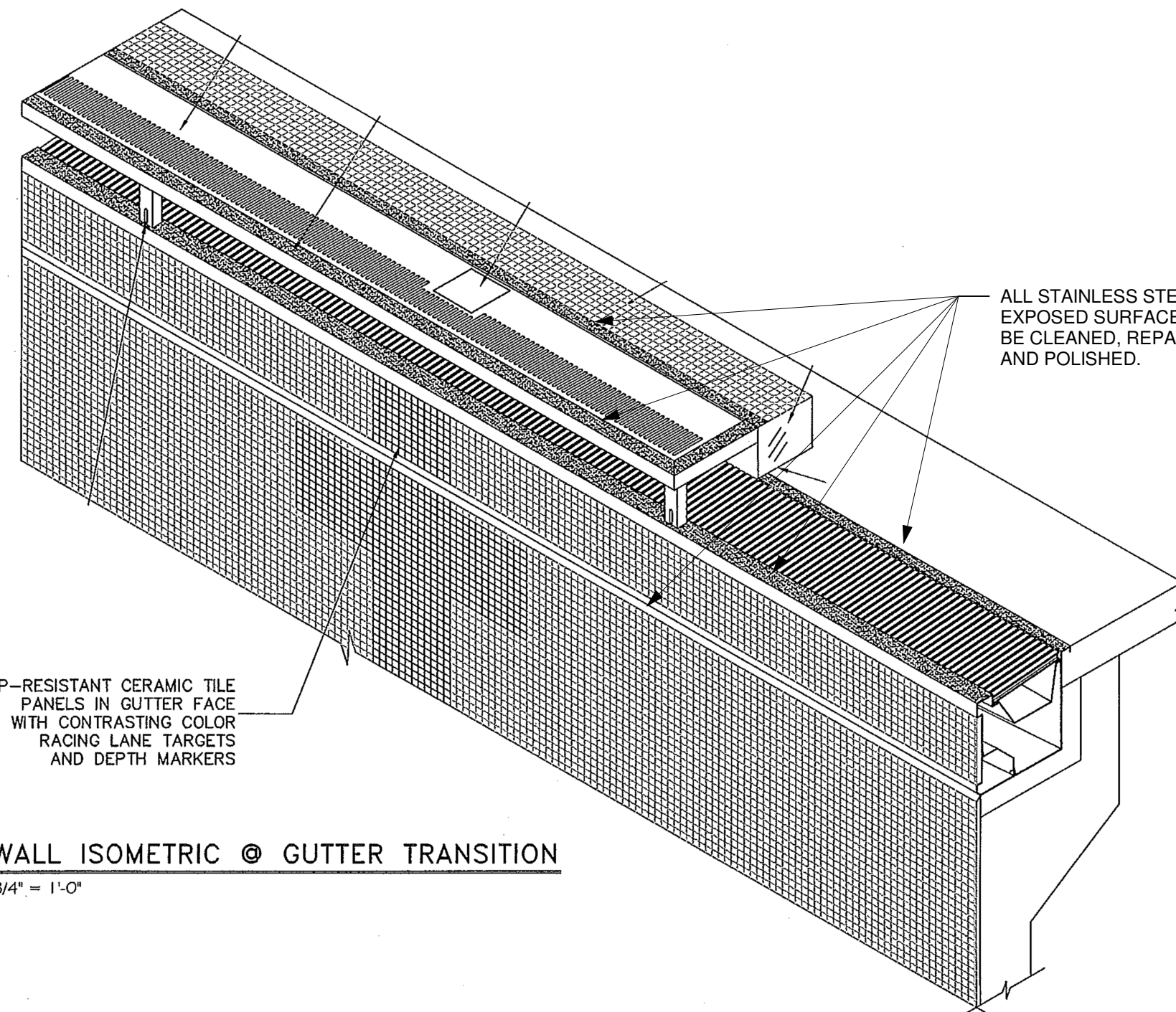


REPLACE ALL MISSING OR LOOSE CERAMIC MOSAIC TILE TYPICAL ENTIRE PERIMETER OF EXISTING TILE FACED GUTTER

SLIP-RESISTANT CERAMIC TILE PANELS IN GUTTER FACE WITH CONTRASTING COLOR RACING LANE TARGETS

1 DEEP CORNER GUTTER ISOMETRIC
SCALE: 3/4" = 1'-0"

ALL STAINLESS STEEL EXPOSED SURFACES SHALL BE CLEANED, REPASSIVATED AND POLISHED.



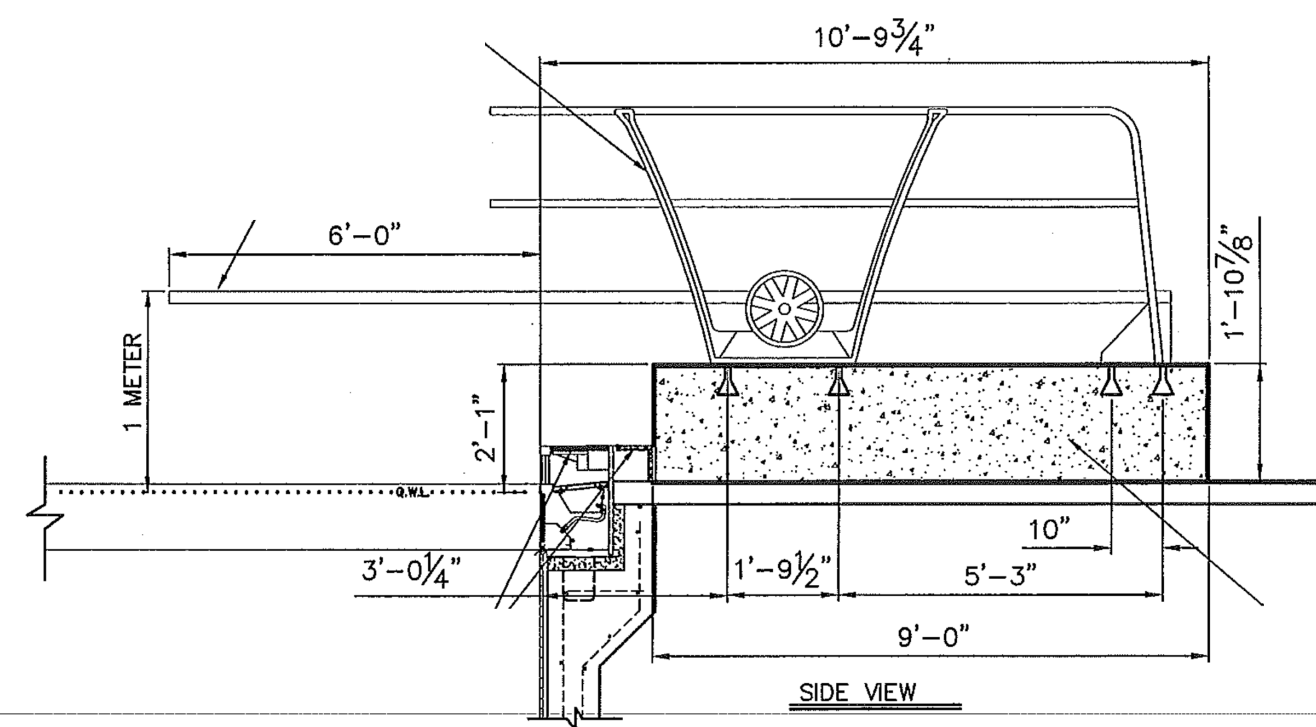
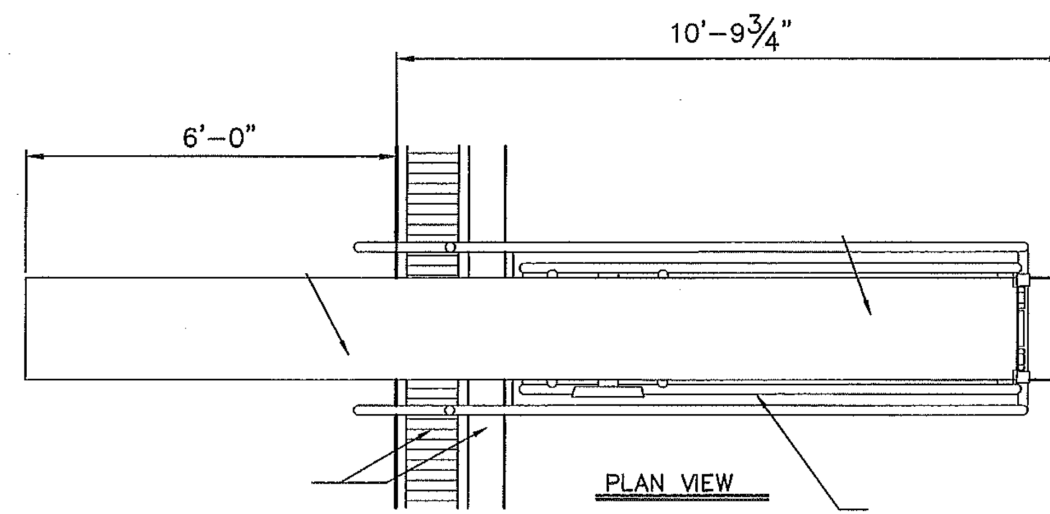
SLIP-RESISTANT CERAMIC TILE PANELS IN GUTTER FACE WITH CONTRASTING COLOR RACING LANE TARGETS AND DEPTH MARKERS

2 ENDWALL ISOMETRIC @ GUTTER TRANSITION
SCALE: 3/4" = 1'-0"

4FT 0IN NO DIVING

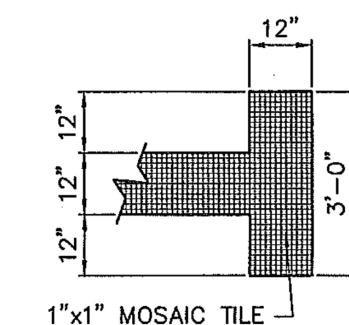
4 MOSAIC TILE DEPTH MARKER DETAIL
SCALE: 1 1/4" = 1'-0"

DEPTH MARKER SCHEDULE	
QTY	MARKER
5	4'-0"
2	5'-0"
6	6'-0"
2	8'-0"
2	10'-0"
2	12'-0"
6	13'-0"
6	NO DIVING

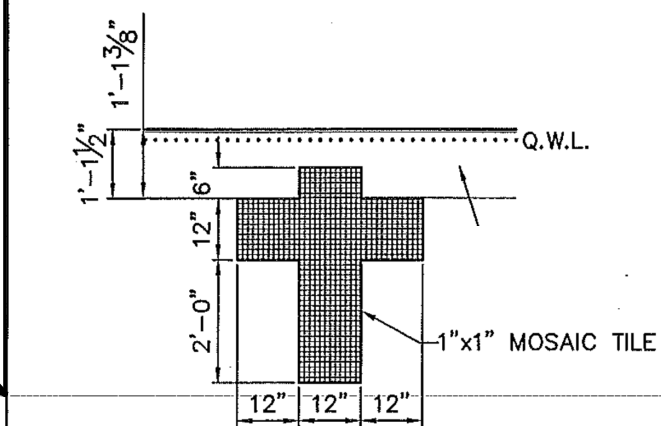


5 DIVING STAND DETAIL
SCALE: 3/8" = 1'-0"

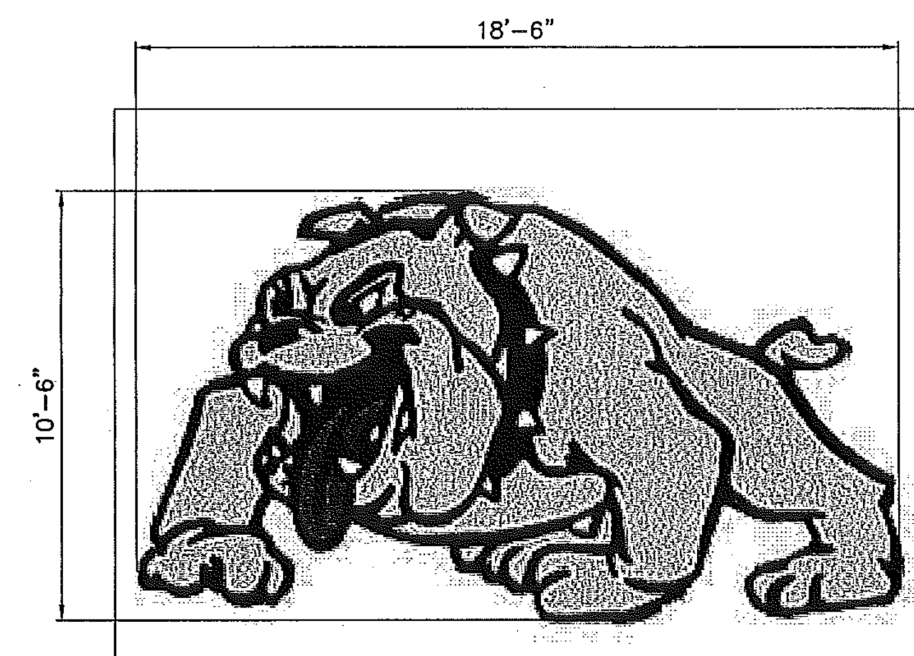
PROVIDED FOR LIMITS OF TILE ON DIVING BOARD BASE PLATFORM TYPICAL FOR 2



7 RACING LANE MARKER
SCALE: 3/8" = 1'-0"



8 RACING LANE MARKER
SCALE: 3/8" = 1'-0"



11 MOSAIC TILE LOGO DETAIL
SCALE: 1/4" = 1'-0"
NOTES:
1) CONFIRM LOGO SIZE AND COLOR SELECTIONS PRIOR TO INSTALLATION.

REGROUT EXISTING LOGO WITH REMAINDER OF CERAMIC TILE FIELD AND LANE LINE TILE

NOT IN CONTRACT

NOT IN CONTRACT

NOT IN CONTRACT

NOT IN CONTRACT

EDWIN M. WALLOVER, III - AIA

WALLOVER
ARCHITECTS INC.

941 Wheatland Avenue, Suite 304
Lancaster, Pennsylvania 17603
tel 717.295.7754
fax 717.295.5577
www.walloverarchitects.com

© WALLOVER ARCHITECTS INCORPORATED

Any reproduction of this document in part or whole without the express written permission of Wallover Architects Incorporated is strictly prohibited. Drawings valid with professional seal affixed.

Issued For:
BIDDING
XX MAR 2021
Not For Construction

RELEASED

No.	Description	Date

**AQUATIC FACILITIES
REHABILITATION
WILSON HIGH SCHOOL**

Wilson School District
2801 Grandview Boulevard
West Lawn, PA 19609

Project Number 20795

POOL DETAILS

API103

THIS SHEET FOR REFERENCE ONLY