



Crabtree, Rohrbaugh & Associates

WILSON SCHOOL DISTRICT

FACILITY STUDY APPROACH

DECEMBER 11, 2018

COMMUNICATION

- **Primary Contact**
- **Core Group Development**
- **Meeting Schedule**

FACILITY STUDY APPROACH

- **PDE Compliance**
- **Educational program / visioning**
- **Enrollment/Demographics**
- **Capacity Analysis**
- **Building Assessments**
- **Options & Costs**

THE STUDY PROCESS

STEP 1



Define Goals

Educational Visioning
Financial
Guiding principles
Indicators of quality
Establish benchmarks

STEP 2



Information
Gathering

Building Capacity
Analysis
Enrollment Analysis
Facility Assessments
Utility cost history
Current Use of Space
Program
Existing Documents

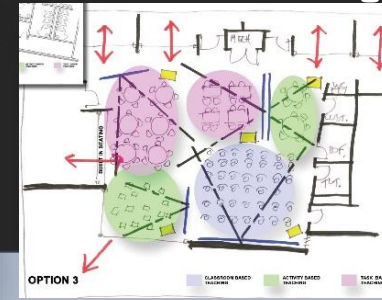
STEP 3



Analyze Data

Space analysis
Energy modeling
Benchmarking
Educational adequacy
Program Compliance
Right sizing the box

STEP 4



Develop Options

Infrastructure improvements
Educational improvements
Community Use
Cost Estimating
Operational Savings
Phasing
Prioritize Projects

STEP 5



Recommendations

Short and Long Term
Planning
Final report

Option Selection

Board

Board

PDE Compliance

Series of Forms / Procedures used to **apply/eligible** for State Reimbursement – (Plancon A - K)

Forms / Process is designed to:

- Document District's planning process
- Provide justification to the public
- Compliance with state laws & regulations

Provides Evaluation as to each Facility's Ability to meet Current & Planned Educational Program Requirements

Identify the Degree to which Current Facilities meet Reasonably Current Construction Standards

Estimated Costs of Necessary Repairs / Improvements

- identifies inadequacies and/or deficiencies

Analysis of Construction Options



EDUCATIONAL PROGRAMMING & VISIONING



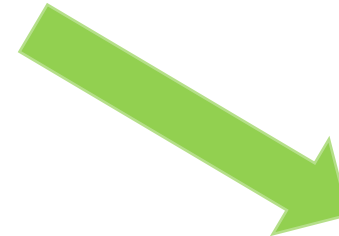
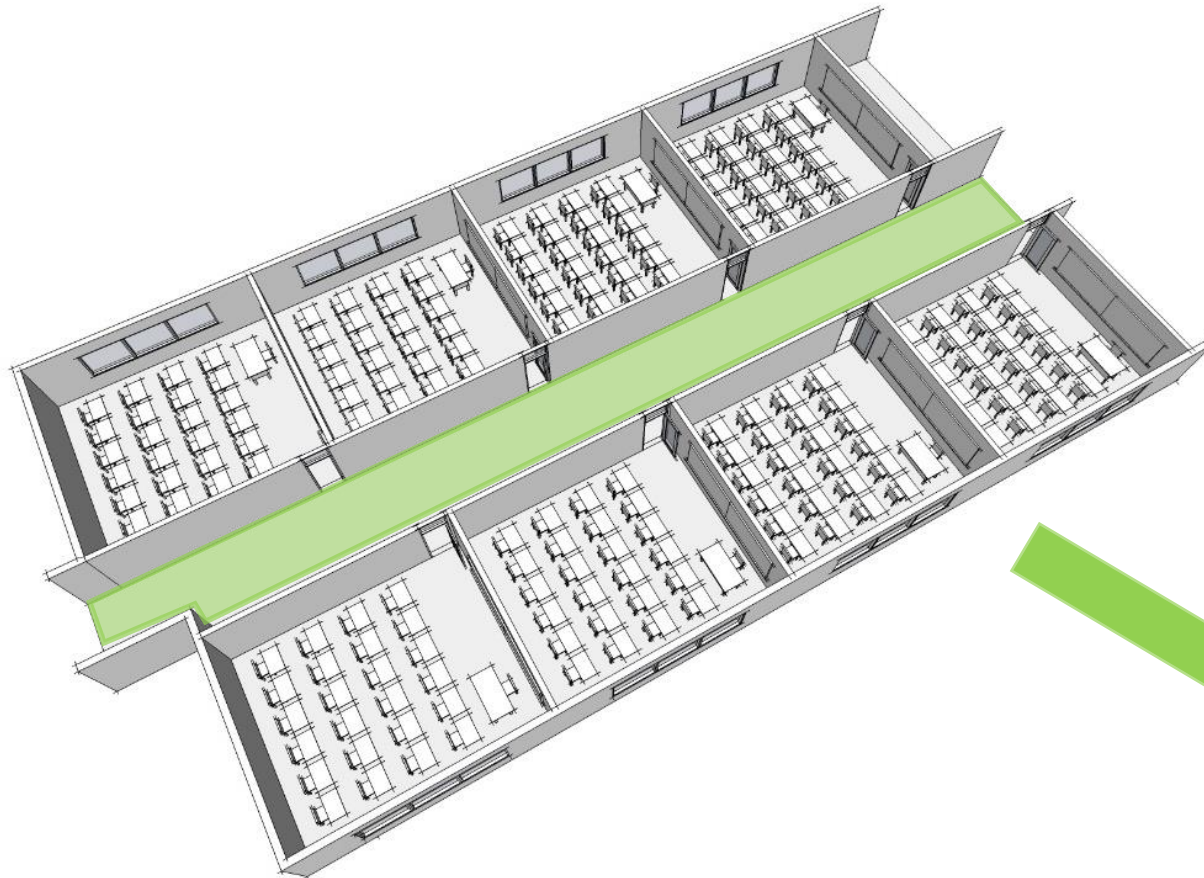
THEN

Mass production of education

One size fits all

Learning environment had no impact on outcomes

No foreseeable need for change = fixed

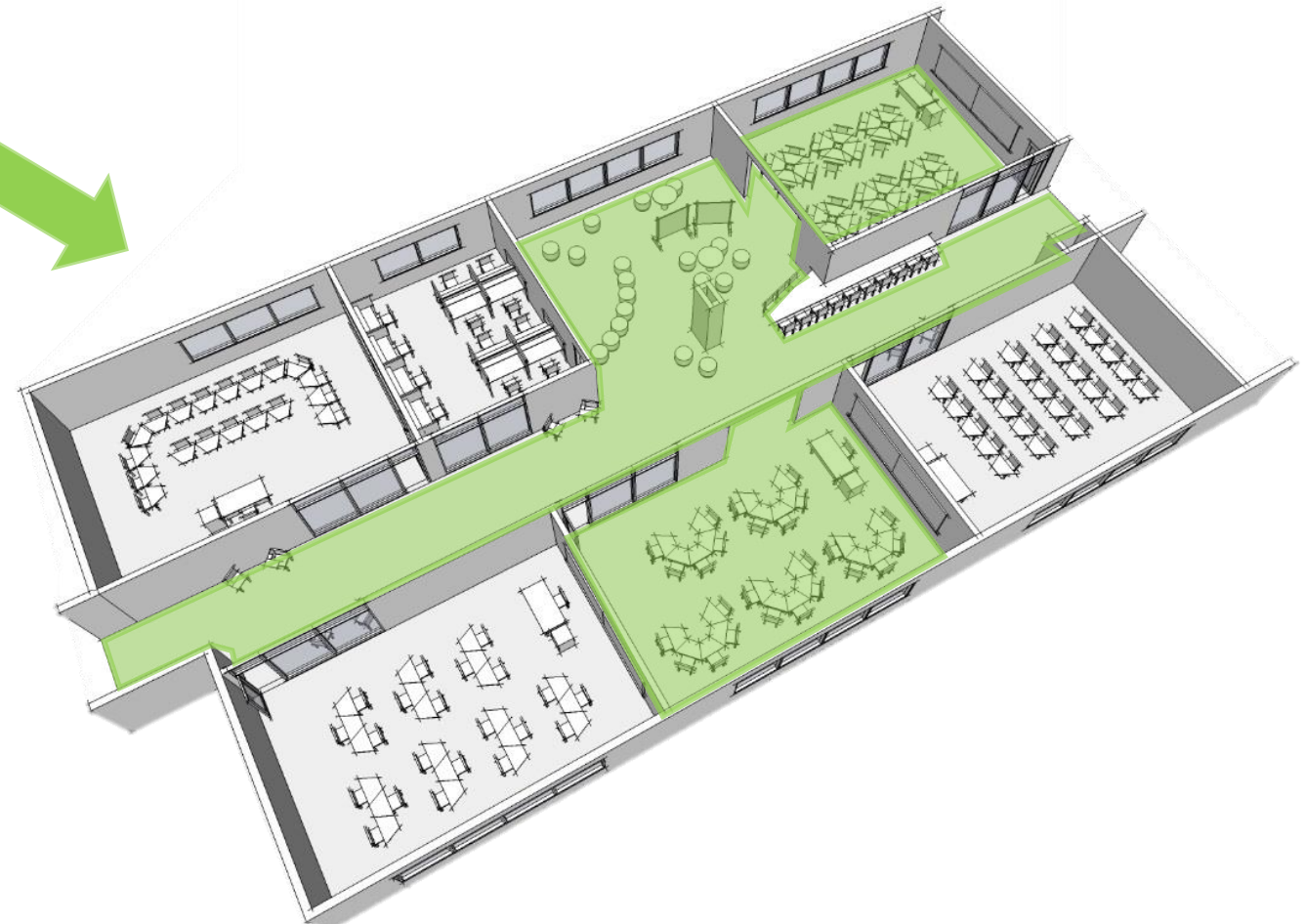


NOW

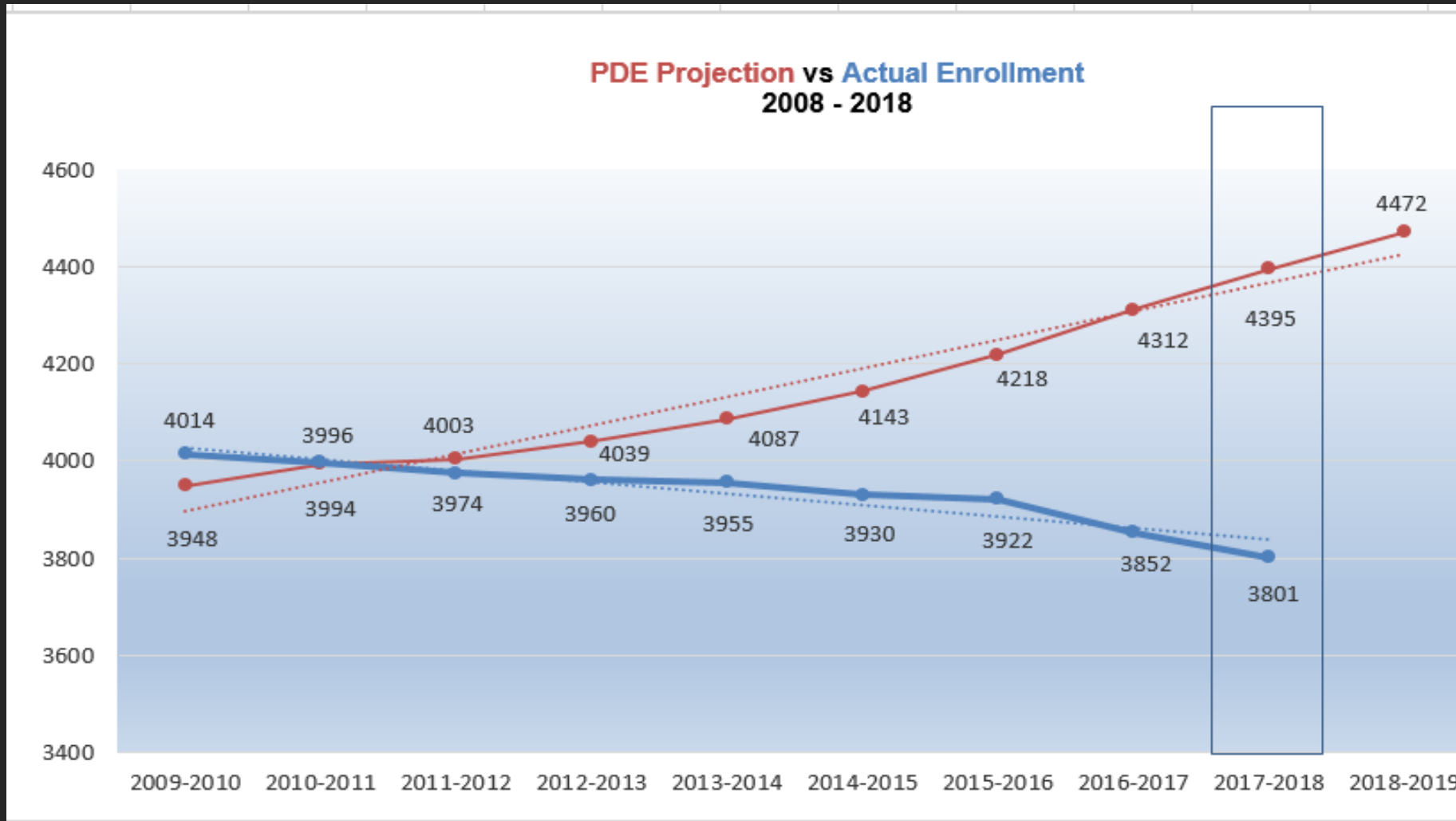
Mass customization of education

Learning environment impacts outcomes

Change = flexibility



CAPACITY / UTILIZATION

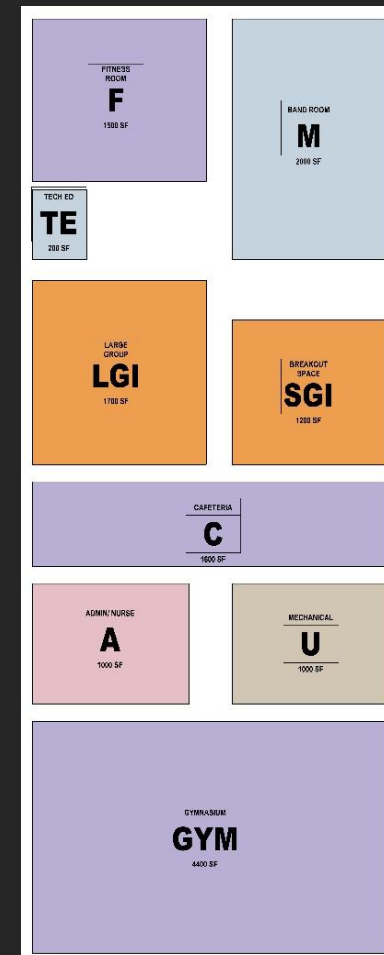
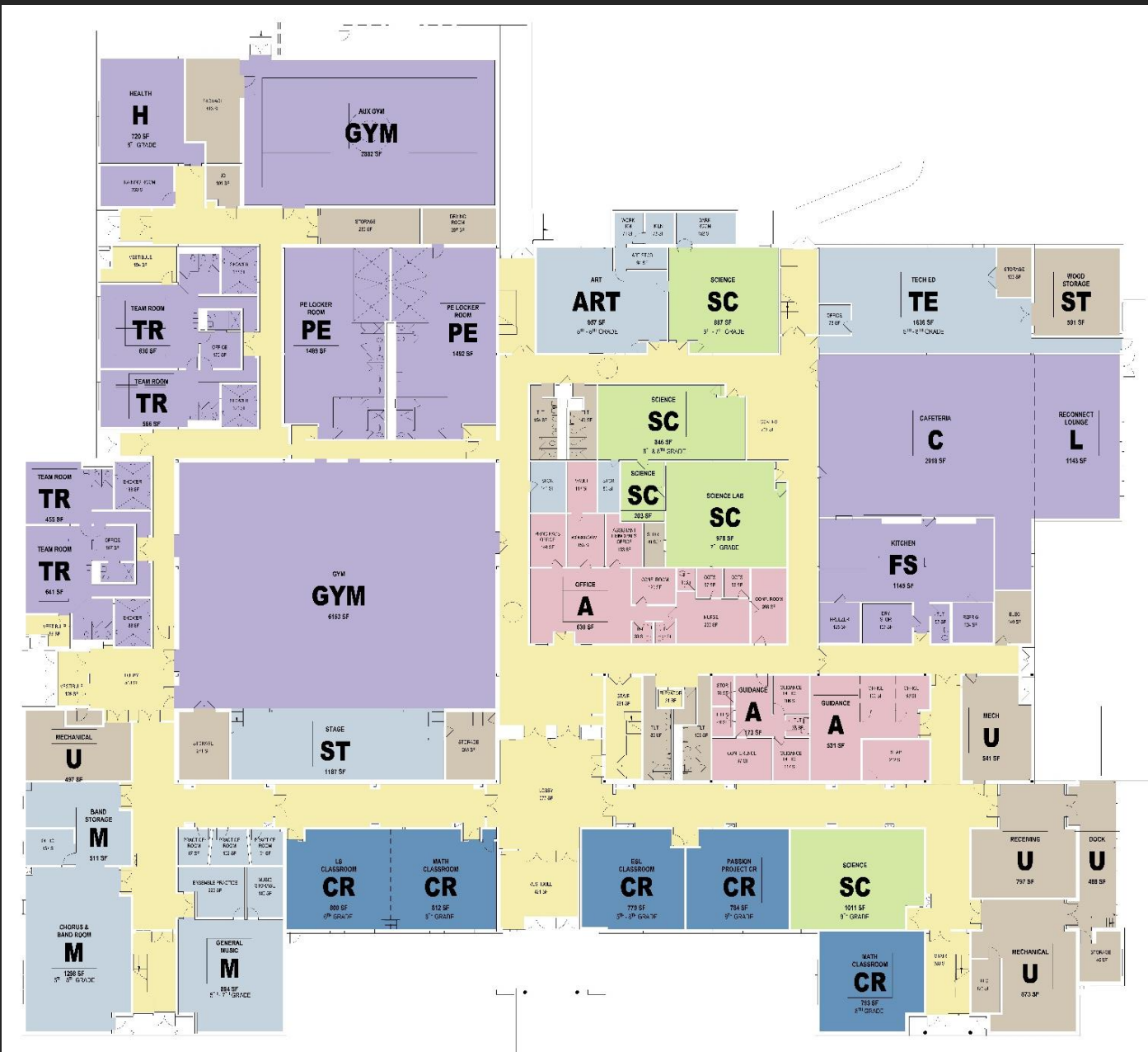


	CURRENT		Fall 2018				TOTAL
FACILITY	GRADES	CAPACITY	ENROLLMENT		UTILIZATION	PDE 85 %	AVAILABLE
Bainbridge*	K - 3	250	203		81%	10	47
East High	K - 3	650	409		63%	144	241
Mill Road	K - 3	325	194		60%	82	131
Rheems	K - 3	475	232		49%	172	243
TOTAL ES		1700	1038		61%	407	662
* 2017 Implementation of Districts Ed Program							

PROGRAM DEFICIENCIES

Educational Program Deficiencies:

- Grade Level organization & separation from public spaces
- Undersized Spaces:
 - Science Labs
 - Tech Ed. & Art
 - Band
 - Food Service / Cafeteria
 - Administration/Nurse/Guidance
 - Gymnasium (non-competition sized court)
- Missing Spaces
 - LGI
 - Breakout Flexible Space
 - Fitness Room (located on Stage)
- Redundant Locker / Team Room spaces
- Outdated instructional furnishings (chalkboards, furniture and equipment)





Develop an understanding of the work required to bring existing school facilities up to current construction standards – Pa Dept. of Education

- Review of ALL District Facilities – High School focus
- Comprehensive Renovations - **20 Year Reimbursement Cycle**
 - Address Educational Program Requirements
 - Building Envelope Assessment; Architectural, Interior Environments, Finishes, Casework etc.
 - Building & Site: Code / Life Safety / ADA Compliance
 - Building Systems Evaluation and Recommendations
 - HVAC, Electrical, Plumbing, Technology
- Energy Savings Analysis

Comprehensive SCOPE

Scope determines budget

EXAMPLES:

Building reorganization

New Ed Program additions

Address ALL site work items

Replace ALL: Interior finishes

Casework

Bldg. Envelope

Replace ALL Mechanical/Elec. Systems

4 Pipe System

Preferred ATC Controls

Fully Air Conditioned

New Lighting Fixtures

Lower Operating Costs

vs.

Reduced / Limited SCOPE

Budget determines scope

Maintain current organization

Minor/ No new additions

Prioritize LDP approval

Reduced replacement of finishes

Limited area

Prioritize by budget

Upgrade Mechanical Systems

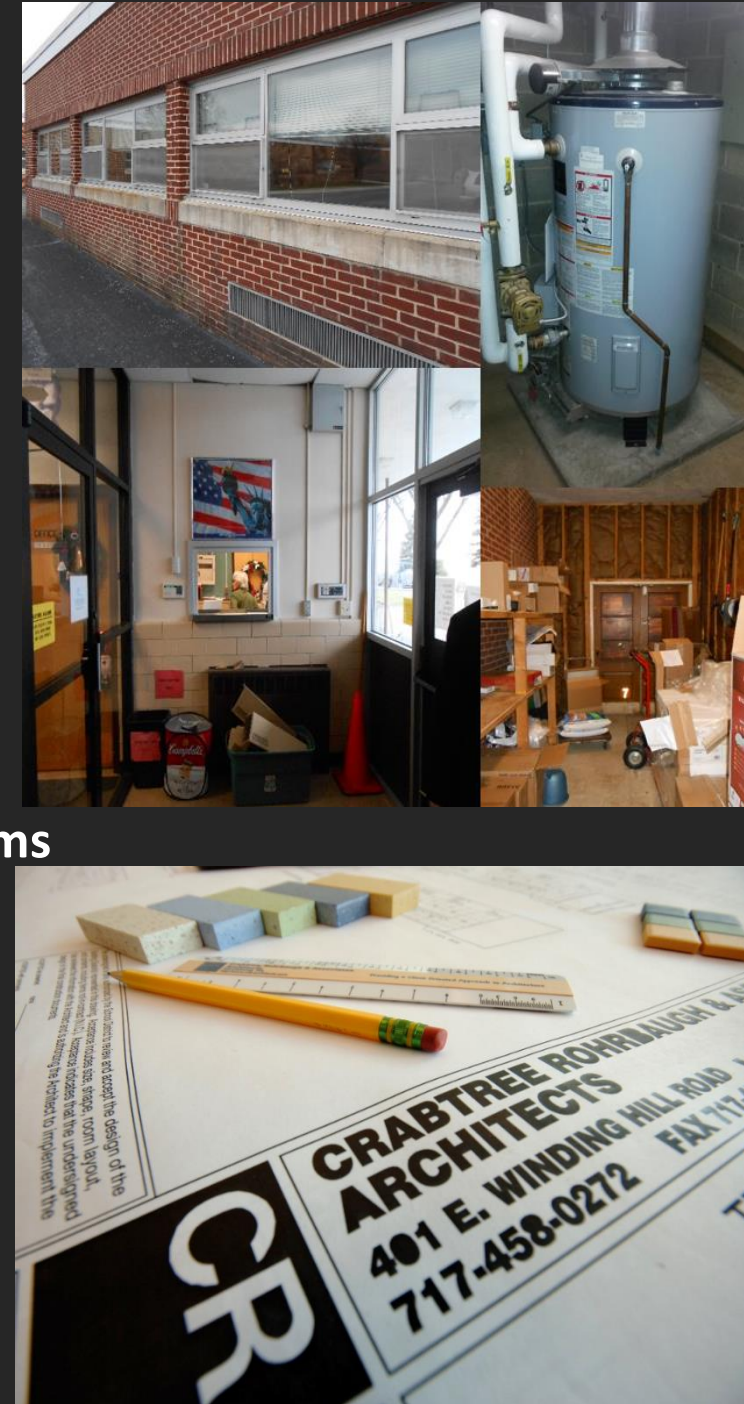
2 Pipe or VAV System

Basic ATC Controls

Limited Air Conditioning

Retrofit Existing Lighting

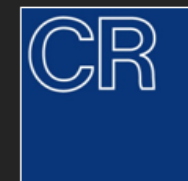
Higher Operating Costs





Providing a client oriented
approach to architecture

Thank You !



Crabtree, Rohrbaugh & Associates
www.cra-architects.com