

LEA Name : Wilson SD
Address : 2601 Grandview Blvd
West Lawn , PA 19609

County : Berks
AUN Number : 114069103
LEA Type : SD

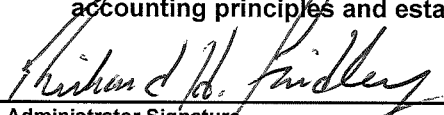
Annual Financial Report Accuracy Certification Statement

For Fiscal Year Ending
6/30/2018

Pennsylvania Department of Education
&
Office of Comptroller Operations

PDE-2056: Intermediate Unit
PDE-2057: School District, AVTS/CTC, Charter School,
and Special Program Jointure


CERTIFICATION: By signing this page I agree that the electronic data submitted is a complete and accurate statement of the financial operations and status of the local education agency for the fiscal year. It has been prepared in accordance with generally accepted accounting principles and established Commonwealth of PA reporting guidelines.



Chief School Administrator Signature

10-10-18

Date



Board Secretary Signature

10-10-18

Date

Jessica Schnettler

Contact Person

(610)670-0180 Ext:1146

Contact Person Telephone Number

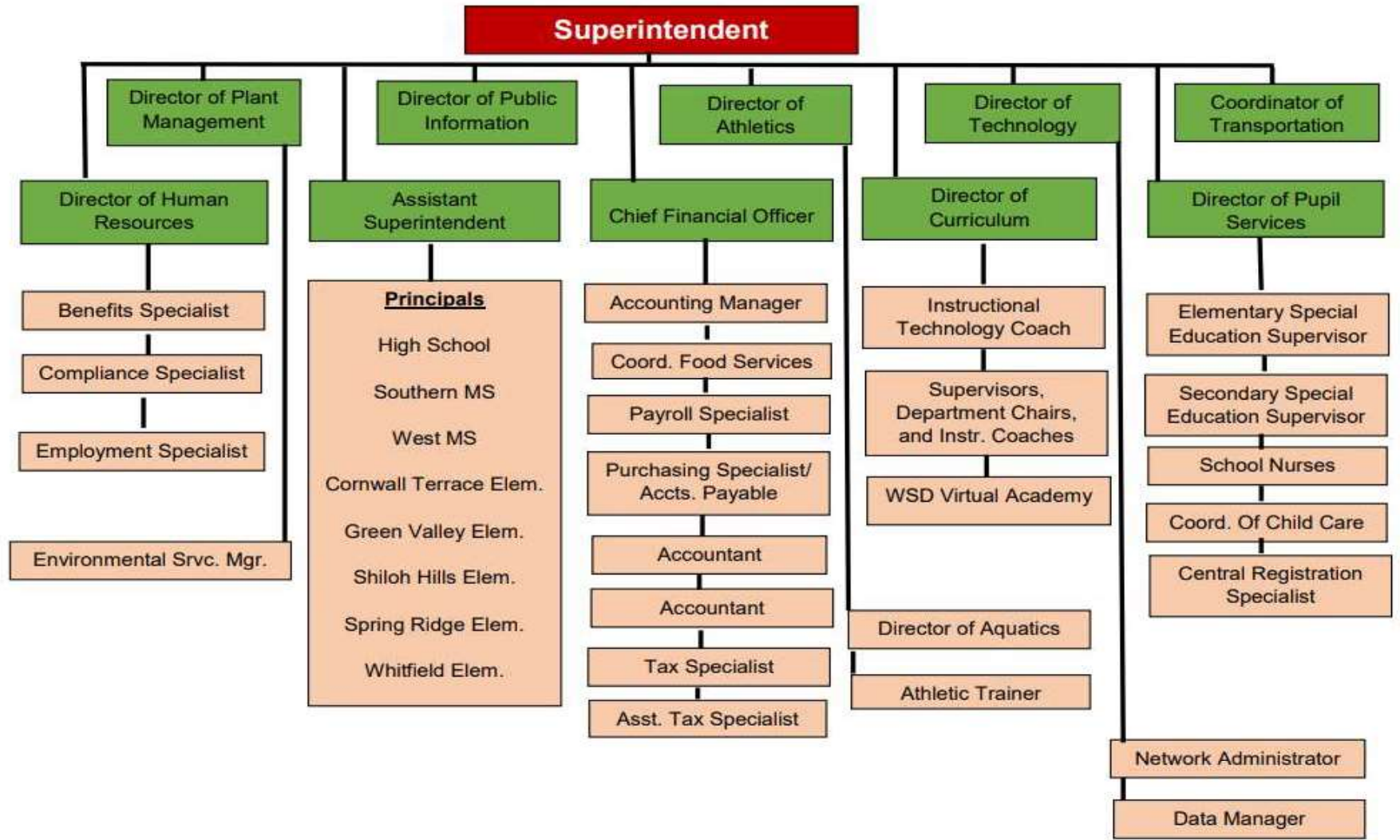
schjesl@wilsonsd.org

Contact Person E-mail Address

(484)334-6426

Contact Person Fax Number

Superintendent



Amounts Expressed in Whole Dollars

<u>General Fund</u>	<u>Public Purpose Trust</u>	<u>Other Compt Approved</u>	<u>Athletic / Activity</u>	<u>Capital Reserve (690.</u>
<u>(10)</u>	<u>(27)</u>	<u>(28)</u>	<u>(29)</u>	<u>1850)</u>
				<u>(31)</u>

Assets And Deferred Outflows Of Resources

Assets

0100 Cash and Cash Equivalents	25,916,120
0110 Investments	
0120 Taxes Receivable	1,882,313
0130 Due From Other Funds	12,048
0141 Due From Other Governments	147,383
0142 State Revenue Receivable	4,680,007
0143 Federal Revenue Receivable	536,452
0145 Other Intergovernmental Revenue Receivable	
0146 Due from Primary Government	
0147 Due from Component Unit	
0150 Other Receivables	145,645
0170 Inventories	
0180 Prepaid Expenses (Expenditures)	
0190 Other Current Assets	

Total Assets	\$33,319,968
---------------------	---------------------

0910 Deferred Outflows of Resources

Total Assets And Deferred Outflows Of Resources	\$33,319,968
--	---------------------

Amounts Expressed in Whole Dollars

	<u>Capital Reserve (1431)</u> <u>(32)</u>	<u>Other Capital Projects</u> <u>Fund</u> <u>(39)</u>	<u>Debt Service</u> <u>(40)</u>	<u>Permanent</u> <u>(90)</u>	<u>Total Governmental</u> <u>Funds</u>
Assets And Deferred Outflows Of Resources					
Assets					
0100 Cash and Cash Equivalents	7,240,367		3,744		33,160,231
0110 Investments					
0120 Taxes Receivable					1,882,313
0130 Due From Other Funds	1,000,000				1,012,048
0141 Due From Other Governments					147,383
0142 State Revenue Receivable					4,680,007
0143 Federal Revenue Receivable					536,452
0145 Other Intergovernmental Revenue Receivable					
0146 Due from Primary Government					
0147 Due from Component Unit					
0150 Other Receivables		300,708			446,353
0170 Inventories					
0180 Prepaid Expenses (Expenditures)					
0190 Other Current Assets					
Total Assets	\$8,240,367	\$300,708	\$3,744		\$41,864,787
0910 Deferred Outflows of Resources					
Total Assets And Deferred Outflows Of Resources	\$8,240,367	\$300,708	\$3,744		\$41,864,787

Amounts Expressed in Whole Dollars	<u>General Fund</u> <u>(10)</u>	<u>Public Purpose Trust</u> <u>(27)</u>	<u>Other Compt Approved</u> <u>(28)</u>	<u>Athletic / Activity</u> <u>(29)</u>	<u>Capital Reserve (690.</u> <u>1850)</u> <u>(31)</u>
Liabilities And Deferred Inflows Of Resources And Fund Balances					
Liabilities					
0400 Due to Other Funds	1,019,801				
0411 Due to Other Governments	434,423				
0412 Due to Primary Government					
0413 Due to Component Unit					
0420 Accounts Payable	1,285,901				
0430 Contracts Payable					
0440 Current Portion of Long-Term Debt	58,113				
0450 Short-Term Payables					
0461 Accrued Salaries and Benefits	5,219,570				
0462 Payroll Deductions and Withholding	7,328,337				
0480 Unearned Revenues					
0490 Other Current Liabilities	256,427				
Total Liabilities	\$15,602,572				
0950 Deferred Inflows of Resources	1,226,711				
Fund Balances					
0810 Nonspendable Fund Balance					
0820 Restricted Fund Balance	60,121				
0830 Committed Fund Balance	8,483,172				
0840 Assigned Fund Balance	2,025,000				
0850 Unassigned Fund Balance	5,922,392				
Total Fund Balances	\$16,490,685				
Total Liabilities, Deferred Inflows Of Resources And Fund Balances	\$33,319,968				

Amounts Expressed in Whole Dollars	<u>Capital Reserve (1431)</u> <u>(32)</u>	<u>Other Capital Projects</u> <u>Fund</u> <u>(39)</u>	<u>Debt Service</u> <u>(40)</u>	<u>Permanent</u> <u>(90)</u>	<u>Total Governmental</u> <u>Funds</u>
Liabilities And Deferred Inflows Of Resources And Fund Balances					
Liabilities					
0400 Due to Other Funds					1,019,801
0411 Due to Other Governments					434,423
0412 Due to Primary Government					
0413 Due to Component Unit					
0420 Accounts Payable	115,136	300,708			1,701,745
0430 Contracts Payable					
0440 Current Portion of Long-Term Debt					58,113
0450 Short-Term Payables					
0461 Accrued Salaries and Benefits					5,219,570
0462 Payroll Deductions and Withholding					7,328,337
0480 Unearned Revenues					
0490 Other Current Liabilities					256,427
Total Liabilities	\$115,136	\$300,708			\$16,018,416
0950 Deferred Inflows of Resources					1,226,711
Fund Balances					
0810 Nonspendable Fund Balance					
0820 Restricted Fund Balance	8,125,231		3,744		8,189,096
0830 Committed Fund Balance					8,483,172
0840 Assigned Fund Balance					2,025,000
0850 Unassigned Fund Balance					5,922,392
Total Fund Balances	\$8,125,231		\$3,744		\$24,619,660
Total Liabilities, Deferred Inflows Of Resources And Fund Balances	\$8,240,367	\$300,708	\$3,744		\$41,864,787

Amounts Expressed in Whole Dollars	<u>General Fund</u> <u>(10)</u>	<u>Public Purpose Trust</u> <u>(27)</u>	<u>Other Compt Approved</u> <u>(28)</u>	<u>Athletic / Activity</u> <u>(29)</u>	<u>Capital Reserve (690,</u> <u>1850)</u> <u>(31)</u>
Revenues					
6000 Revenue from Local Sources	77,926,569				
7000 Revenue from State Sources	23,649,490				
8000 Revenue from Federal Sources	1,309,451				
Total Revenues	\$102,885,510				
Expenditures					
1000 Instruction	58,672,261				
2000 Support Services	26,798,192				
3000 Operation of Non-Instructional Services	2,410,301				
4000 Facilities Acquisition, Construction and Improvement Services					
5110 Debt Service					
5130 Refund of Prior Year Revenues / Receipts	14,866				
Total Expenditures	\$87,895,620				
Excess (Deficiency) Of Revenues Over Expenditures	\$14,989,890				
Other Financing Sources (Uses)					
9110 Face Value of Bonds Issued					
9120 Proceeds from Refunding of Bonds					
9130 Bond Premiums					
9200 Proceeds from Extended-Term Financing					
9300 Interfund Transfers - IN	211,192				
9400 Sale of or Compensation for Loss of Fixed Assets	33,481				
9710 Transfers from Component Units					
9720 Transfers from Primary Governments					
9910 Other Financing Sources Not Listed in the 9000 Series					
9990 Insurance Recoveries					
5120 Debt Service – Refunded Bonds					
5150 Bond Discounts					
5200 Interfund Transfers – Out	12,720,133				
5300 Transfers Out to Component Units/Primary Governments					
Total Other Financing Sources (Uses)	(\$12,475,460)				

Amounts Expressed in Whole Dollars	<u>Capital Reserve (1431)</u> <u>(32)</u>	<u>Other Capital Projects</u> <u>Fund</u> <u>(39)</u>	<u>Debt Service</u> <u>(40)</u>	<u>Permanent</u> <u>(90)</u>	<u>Total Governmental</u> <u>Funds</u>
Revenues					
6000 Revenue from Local Sources	96,888				78,023,457
7000 Revenue from State Sources					23,649,490
8000 Revenue from Federal Sources					1,309,451
Total Revenues	\$96,888				\$102,982,398
Expenditures					
1000 Instruction					58,672,261
2000 Support Services	444,563	215,465			27,458,220
3000 Operation of Non-Instructional Services					2,410,301
4000 Facilities Acquisition, Construction and Improvement Services	1,580,010	662,917			2,242,927
5110 Debt Service			11,745,133		11,745,133
5130 Refund of Prior Year Revenues / Receipts					14,866
Total Expenditures	\$2,024,573	\$878,382	\$11,745,133		\$102,543,708
Excess (Deficiency) Of Revenues Over Expenditures	(\$1,927,685)	(\$878,382)	(\$11,745,133)		\$438,690
Other Financing Sources (Uses)					
9110 Face Value of Bonds Issued		878,382			878,382
9120 Proceeds from Refunding of Bonds			7,645,000		7,645,000
9130 Bond Premiums					
9200 Proceeds from Extended-Term Financing					
9300 Interfund Transfers - IN	1,000,000		11,720,133		12,931,325
9400 Sale of or Compensation for Loss of Fixed Assets					33,481
9710 Transfers from Component Units					
9720 Transfers from Primary Governments					
9910 Other Financing Sources Not Listed in the 9000 Series					
9990 Insurance Recoveries					
5120 Debt Service – Refunded Bonds			7,616,256		7,616,256
5150 Bond Discounts					
5200 Interfund Transfers – Out					12,720,133
5300 Transfers Out to Component Units/Primary Governments					
Total Other Financing Sources (Uses)	\$1,000,000	\$878,382	\$11,748,877		\$1,151,799

Amounts Expressed in Whole Dollars	<u>General Fund</u> <u>(10)</u>	<u>Public Purpose Trust</u> <u>(27)</u>	<u>Other Compt Approved</u> <u>(28)</u>	<u>Athletic / Activity</u> <u>(29)</u>	<u>Capital Reserve</u> <u>(690.</u> <u>1850)</u> <u>(31)</u>
Special And Extraordinary Items					
9920 Special Items – Gains					
9930 Extraordinary Items – Gains					
5520 Special Items – Losses					
5530 Extraordinary Items – Losses					
Net Change In Fund Balances	\$2,514,430				
Fund Balance					
0001 Fund Balance - Beginning of Fiscal Year	13,976,255				
Fund Balance - End Of Year	\$16,490,685				

Amounts Expressed in Whole Dollars	<u>Capital Reserve (1431)</u> <u>(32)</u>	<u>Other Capital Projects</u> <u>Fund</u> <u>(39)</u>	<u>Debt Service</u> <u>(40)</u>	<u>Permanent</u> <u>(90)</u>	<u>Total Governmental</u> <u>Funds</u>
Special And Extraordinary Items					
9920 Special Items – Gains					
9930 Extraordinary Items – Gains					
5520 Special Items – Losses					
5530 Extraordinary Items – Losses					
Net Change In Fund Balances	(\$927,685)		\$3,744		\$1,590,489
Fund Balance					
0001 Fund Balance - Beginning of Fiscal Year	9,052,916				23,029,171
Fund Balance - End Of Year	\$8,125,231		\$3,744		\$24,619,660

Amounts Expressed in Whole Dollars	<u>Food Service</u> <u>(51)</u>	<u>Child Care</u> <u>Operations</u> <u>(52)</u>	<u>Other Enterprise</u> <u>(58)</u>	<u>TOTAL</u>	<u>Internal Service</u> <u>(60)</u>
Assets And Deferred Outflows Of Resources					
Current Assets					
0100 Cash and Cash Equivalents	275,947	330,595		606,542	
0110 Investments					
0130 Due From Other Funds	13,544	(5,791)		7,753	
0141 Due From Other Governments	113	1,605		1,718	
0142 State Revenue Receivable	12,530	3,689		16,219	
0143 Federal Revenue Receivable	154,265			154,265	
0146 Due from Primary Government					
0147 Due from Component Unit					
0150 Other Receivables	6,571	1,432		8,003	
0170 Inventories	65,093			65,093	
0180 Prepaid Expenses (Expenditures)					
0190 Other Current Assets					
Total Current Assets	\$528,063	\$331,530		\$859,593	
Noncurrent Assets					
0211 Land					
0212 Site Improvements (Net)					
0220 Buildings and Building Improvements (Net)		562,179		562,179	
0230 Machinery, Equipment and Furniture (Net)	135,759	81,574		217,333	
0250 Construction in Progress					
0260 Long Term Prepayments					
0290 Other Noncurrent Assets					
Total Noncurrent Assets	\$135,759	\$643,753		\$779,512	
0910 Deferred Outflows of Resources	639,891	564,185		1,204,076	
Total Assets And Deferred Outflows Of Resources	\$1,303,713	\$1,539,468		\$2,843,181	

Amounts Expressed in Whole Dollars	<u>Food Service</u> (51)	<u>Child Care</u> <u>Operations</u> (52)	<u>Other Enterprise</u> (58)	<u>TOTAL</u>	<u>Internal Service</u> (60)
Liabilities And Deferred Inflows Of Resources And Net Position					
Current Liabilities					
0400 Due to Other Funds					
0411 Due to Other Governments					
0413 Due to Component Unit					
0420 Accounts Payable	30,101	1,145		31,246	
0430 Contracts Payable					
0440 Current Portion of Long-Term Debt					
0450 Short-Term Payables					
0461 Accrued Salaries and Benefits	15,536	36,967		52,503	
0462 Payroll Deductions and Withholding					
0480 Unearned Revenues	68,073	7,513		75,586	
0490 Other Current Liabilities					
Total Current Liabilities	\$113,710	\$45,625		\$159,335	
Noncurrent Liabilities					
0510 Bonds Payable					
0520 Extended-Term Financing Agreements Payable					
0530 Lease-Purchase Obligations					
0540 Accumulated Compensated Absences					
0550 Authority Lease Obligations					
0560 Other Post-Employment Benefits (OPEB)	308,864	263,785		572,649	
0570 Net Pension Liability	3,196,344	2,438,448		5,634,792	
0599 Other Noncurrent Liabilities					
Total Noncurrent Liabilities	\$3,505,208	\$2,702,233		\$6,207,441	
Total Liabilities	\$3,618,918	\$2,747,858		\$6,366,776	
0950 Deferred Inflows of Resources	211,856	20,586		232,442	
Net Position					
0791 Net Investment in Capital Assets	135,759	643,753		779,512	
0008 Restricted Net Position (0792 – 0798)					
0799 Unrestricted Net Position	(2,662,820)	(1,872,729)		(4,535,549)	
Total Net Position	(\$2,527,061)	(\$1,228,976)		(\$3,756,037)	
Total Liabilities And Deferred Inflows Of Resources And Net Position	\$1,303,713	\$1,539,468		\$2,843,181	

Amounts Expressed in Whole Dollars	<u>Food Service</u> <u>(51)</u>	<u>Child Care Operations</u> <u>(52)</u>	<u>Other Enterprise</u> <u>(58)</u>	<u>TOTAL</u>	<u>Internal Service</u> <u>(60)</u>
Operating Revenues					
6600 Food Service Revenue	1,532,363			1,532,363	
0071 Charges for Services		1,202,098		1,202,098	
0072 Other Operating Revenue					
Total Operating Revenues	\$1,532,363	\$1,202,098		\$2,734,461	
Operating Expenses					
100 Personnel Services – Salaries	1,018,138	718,438		1,736,576	
200 Personnel Services – Employee Benefits	494,667	564,692		1,059,359	
300 Purchased Professional and Technical Services	10,923	3,720		14,643	
400 Purchased Property Services	35,868	36,984		72,852	
500 Other Purchased Services	41,987	8,220		50,207	
600 Supplies	1,253,179	52,236		1,305,415	
740 Depreciation	18,302	35,584		53,886	
810 Dues and Fees	1,219	56		1,275	
890 Miscellaneous Expenditures		1,834		1,834	
Total Operating Expenses	\$2,874,283	\$1,421,764		\$4,296,047	
Operating Income (Loss)	(\$1,341,920)	(\$219,666)		(\$1,561,586)	
Non Operating Revenues (Expenses)					
6500 Earnings on Investments	4,781	4,293		9,074	
6920 Contributions and Donations from Private Sources					
6930 Gains or Losses on Sale of Fixed Assets					
6991 Refunds of a Prior Year Expenditure					
7000 Revenue from State Sources	264,839	222,346		487,185	
8000 Revenue from Federal Sources	1,151,438			1,151,438	
820 Claims and Judgments Against the LEA					
830 Interest					
TOTAL Non Operating Revenues (Expenses)	\$1,421,058	\$226,639		\$1,647,697	
Income (Loss) Before Contributions And Transfers	\$79,138	\$6,973		\$86,111	

Amounts Expressed in Whole Dollars	<u>Food Service</u> <u>(51)</u>	<u>Child Care Operations</u> <u>(52)</u>	<u>Other Enterprise</u> <u>(58)</u>	<u>TOTAL</u>	<u>Internal Service</u> <u>(60)</u>
Contributions, Transfers, and Special and Extraordinary Items					
5200 Interfund Transfers – Out	46,753	164,439		211,192	
5300 Transfers Out to Component Units/Primary Governments					
5520 Special Items – Losses					
5530 Extraordinary Items – Losses					
9300 Interfund Transfers - IN					
9500 Capital Contributions					
9700 Transfers IN From Component Units/Primary Governments					
9920 Special Items – Gains					
9930 Extraordinary Items – Gains					
Change In Net Position	\$32,385	(\$157,466)		(\$125,081)	
0002 Net Position - Beginning of Fiscal Year	(2,559,446)	(1,071,510)		(3,630,956)	
0003 Accounting Changes / Residual Equity Transfers					
Net Position - End Of Year	(\$2,527,061)	(\$1,228,976)		(\$3,756,037)	

Amounts Expressed in Whole Dollars	<u>Food Service</u> <u>(51)</u>	<u>Child Care Operations</u> <u>(52)</u>	<u>Other Enterprise</u> <u>(58)</u>	<u>TOTAL</u>	<u>Internal Service(60)</u>
Cash Flows From Operating Activities					
0011 Cash Receipts From Users	1,518,500	1,205,648		2,724,148	
0012 Cash Receipts From Assessments Made to Other Funds					
0013 Cash Receipts From Earnings on Investments					
0014 Cash Receipts From Other Operating Revenue					
0015 Cash Payments To Employees For Services	1,517,513	1,126,059		2,643,572	
0016 Cash Payments For Insurance Claims					
0017 Cash Payments To Suppliers For Goods and Services	1,191,203	120,456		1,311,659	
0018 Cash Payments For Other Operating Expenses					
Net Cash Provided By (Used For) Operating Activities	(\$1,190,216)	(\$40,867)		(\$1,231,083)	
Cash Flows From Non-Capital Financing Activities					
0021 Receipts From Local Sources - 6000					
0022 Receipts From State Sources - 7000	260,799	221,539		482,338	
0023 Receipts From Federal Sources -8000	944,838			944,838	
0024 Notes and Loans Received (Repaid)					
0025 Interest Paid on Notes/Loans - 5100-830					
0026 Operating Transfers In (Out)/Residual Equity Trans					
0027 Operating Transfers In (Out) Primary Government / Comp Unit	(46,753)	(164,439)		(211,192)	
0028 Receipts From Refund of Prior Year Expenditures - 6991					
0029 Special and Extraordinary Gains (losses)					
0030 Receipts from Insurance Recoveries -9990					
Net Cash Prov By (Used for) Non-Capital Financing Activities	\$1,158,884	\$57,100		\$1,215,984	
Cash Flows From Capital and Related Financing Activities					
0031 Payments For Fac Acq, Const, and Imp - 4000	(21,047)	(170,522)		(191,569)	
0032 Gain / (Loss) on Sale of Fixed Assets - 6930					
0033 Proceeds From Extended Term Financing - 9200					
0034 Principal Paid on Financing Agreements					
0035 Interest Paid on Financing Agreements - 5100-830					
0036 (Inc) Dec in Contributed Capital					
Net Cash Prov By (Used for) Capital and Related Financing Activities	(\$21,047)	(\$170,522)		(\$191,569)	
Cash Flows From Investing Activities					
0041 Earnings on Investments - 6500	4,781	4,293		9,074	
0042 Purchase of Inv Securities / Deposits to Inv Pools					
0043 Receipts From Investment Pool Withdrawals					
0044 Proceeds from Sale and Maturity of Inv Securities					

LEA : 114069103 Wilson SD

Printed 10/30/2018 9:35:55 AM

0045 Loans Received (Paid)

Net Cash Prov By (Used for) Investing Activities	\$4,781	\$4,293	\$9,074
---	----------------	----------------	----------------

	<u>Food Service</u> <u>(51)</u>	<u>Child Care Operations</u> <u>(52)</u>	<u>Other Enterprise</u> <u>(58)</u>	<u>TOTAL</u>	<u>Internal Service</u> <u>(60)</u>
Net Increase (Decrease) in Cash Flows	(47,598)	(149,996)		(197,594)	
0004 Cash and Cash Equivalents Beginning of Year	323,545	480,591		804,136	
Cash and Cash Equivalents at Year End	\$275,947	\$330,595		\$606,542	

Reconciliation of Operating Income (Loss) To Net Cash Provided by (Used For) Operating Activities

0005 Operating Income (Loss) per REP	(1,341,920)	(219,666)		(1,561,586)	
Adjustments					
0051 Depreciation and Net Amortization	18,302	35,584		53,886	
0052 Provision for Uncollectible Accounts					
0053 Other Adjustments	158,853			158,853	
Effect of Changes in Assets, Liabilities, Deferred Outflows and Deferred Inflows					
0054 (Inc) Dec In Accounts Receivable (0120-0150)	(17,611)	124		(17,487)	
0055 Advances to Other Funds (0160)					
0056 (Inc) Dec in Inventories (0170)	(27,207)			(27,207)	
0057 (Inc) Dec in Prepaid Expenses (0180)					
0058 (Inc) Dec in Other Current or Noncurrent Assets					
0064 Deferred Outflows (0910)	(4,662)	202,598		197,936	
0059 Inc (Dec) in Accounts Payable (0400-0450)	20,534	(16,430)		4,104	
0060 Inc (Dec) in Accrued Salaries/Benefits (0461)	5,169	5,054		10,223	
0065 Inc (Dec) in Net Pension Liabilities (0570)	60,235	(76,973)		(16,738)	
0066 Inc (Dec) in Other Postemp Benefit Oblig (0560)	48,943	25,846		74,789	
0061 Inc (Dec) in Payroll Deductions/Withholding (0462)					
0062 Inc (Dec) in Unearned Revenue (0480)	(9,455)	4,232		(5,223)	
0063 Inc (Dec) in Other Current or Noncurrent Liabilities					
0067 Deferred Inflows (0950)	(101,397)	(1,236)		(102,633)	
Total Adjustments	\$151,704	\$178,799		\$330,503	
Cash Provided By (Used for) Total	(\$1,190,216)	(\$40,867)		(\$1,231,083)	

**COMBINED STATEMENT OF CASH FLOWS
SCHEDULE OF NONCASH INVESTING, CAPITAL, AND FINANCING ACTIVITIES**

Explanation of Transaction and Balance Sheet Effect	Amount
During the year, the district used \$158,853 of commodities from the U.S. Department of Agriculture.	158,853
Total	\$158,853

LEA : 114069103 Wilson SD

Printed 10/30/2018 9:35:57 AM

Amounts Expressed in Whole Dollars

	<u>Private Purpose Trust</u> (71)	<u>Investment Trust</u> (72)	<u>Pension Trust</u> (73)	<u>Activity</u> (81)
Assets And Deferred Outflows Of Resources				
Assets				
0100 Cash and Cash Equivalents	37,471			194,648
0110 Investments				
0130 Due From Other Funds				
0147 Due from Component Unit				
0150 Other Receivables				
0170 Inventories				
0180 Prepaid Expenses (Expenditures)				
0190 Other Current Assets				
0220 Buildings and Building Improvements (Net)				
0230 Machinery, Equipment and Furniture (Net)				
Total Assets	\$37,471			\$194,648
0910 Deferred Outflows of Resources				
Total Assets And Deferred Outflows Of Resources	\$37,471			\$194,648

LEA : 114069103 Wilson SD

Printed 10/30/2018 9:35:57 AM

Amounts Expressed in Whole Dollars

	<u>Other Agency</u> <u>(89)</u>	<u>Discrete Component Units</u> <u>(98)</u>	<u>Discrete Component Units</u> <u>(99)</u>	<u>Total Fiduciary Funds</u>
Assets And Deferred Outflows Of Resources				
Assets				
0100 Cash and Cash Equivalents				232,119
0110 Investments				
0130 Due From Other Funds				
0147 Due from Component Unit				
0150 Other Receivables				
0170 Inventories				
0180 Prepaid Expenses (Expenditures)				
0190 Other Current Assets				
0220 Buildings and Building Improvements (Net)				
0230 Machinery, Equipment and Furniture (Net)				
Total Assets				\$232,119
0910 Deferred Outflows of Resources				
Total Assets And Deferred Outflows Of Resources				\$232,119

LEA : 114069103 Wilson SD

Printed 10/30/2018 9:35:57 AM

Amounts Expressed in Whole Dollars	<u>Private Purpose Trust</u> (71)	<u>Investment Trust</u> (72)	<u>Pension Trust</u> (73)	<u>Activity</u> (81)
Liabilities, Deferred Inflows Of Resources And Net Position				
Liabilities				
0400 Due to Other Funds				
0411 Due to Other Governments				
0412 Due to Primary Government				
0413 Due to Component Unit				
0420 Accounts Payable				
0430 Contracts Payable				
0450 Short-Term Payables				
0461 Accrued Salaries and Benefits				
0462 Payroll Deductions and Withholding				
0480 Unearned Revenues				
0490 Other Current Liabilities				194,648
Total Liabilities				\$194,648
0950 Deferred Inflows of Resources				
Net Position				
0791 Net Investment in Capital Assets				
0009 Restricted Net Position (0792 – 0798)	37,471			
0799 Unrestricted Net Position				
Total Net Position	\$37,471			
Total Liabilities, Deferred Inflows Of Resources And Net Position	\$37,471			\$194,648

LEA : 114069103 Wilson SD

Printed 10/30/2018 9:35:57 AM

Amounts Expressed in Whole Dollars

<u>Other Agency</u>	<u>Discrete Component Units</u>	<u>Discrete Component Units</u>	<u>Total Fiduciary Funds</u>
(89)	(98)	(99)	

Liabilities, Deferred Inflows Of Resources And Net Position

Liabilities

0400 Due to Other Funds			
0411 Due to Other Governments			
0412 Due to Primary Government			
0413 Due to Component Unit			
0420 Accounts Payable			
0430 Contracts Payable			
0450 Short-Term Payables			
0461 Accrued Salaries and Benefits			
0462 Payroll Deductions and Withholding			
0480 Unearned Revenues			
0490 Other Current Liabilities			194,648

Total Liabilities			\$194,648
--------------------------	--	--	------------------

0950 Deferred Inflows of Resources

Net Position

0791 Net Investment in Capital Assets			
0009 Restricted Net Position (0792 – 0798)			37,471
0799 Unrestricted Net Position			

Total Net Position			\$37,471
---------------------------	--	--	-----------------

Total Liabilities, Deferred Inflows Of Resources And Net Position			\$232,119
--	--	--	------------------

Amounts Expressed in Whole Dollars	<u>Private Purpose Trust</u> (71)	<u>Investment Trust</u> (72)	<u>Pension Trust</u> (73)	<u>Discrete Component</u> <u>Units</u> (98)	<u>Discrete Component</u> <u>Units</u> (99)	<u>Total Fiduciary</u> <u>Funds</u>
Additions						
0091 Gifts and Contributions	21,354					21,354
0092 Other Additions	259					259
Deductions						
0093 Scholarships Awarded	20,000					20,000
0094 Other Deductions						
Change In Net Position	\$1,613					\$1,613
0006 Net Position – Beginning of Fiscal Year	35,858					35,858
0007 Net Position Held in Trust for Pension Benefits						
Net Position - End of Fiscal Year	\$37,471					\$37,471

	<u>Revenue Reported In Current Year</u>	<u>Current Year Tax Accrual</u>	<u>Prior Year Tax Accrual</u>	<u>Taxes Collected In Current Year</u>
<u>Revenue from Local Sources</u>				
6111 Current Real Estate Taxes	62,875,478.84			62,875,478.84
6112 Interim Real Estate Taxes	252,401.22			252,401.22
6113 Public Utility Realty Taxes	73,013.50			73,013.50
6114 Payments in Lieu of Current Taxes - State / Local	1,014.54			1,014.54
6120 Current Per Capita Taxes, Section 679	120,145.25			120,145.25
6141 Current Act 511 Per Capita Taxes	120,145.25			120,145.25
6143 Current Act 511 Local Services Taxes	121,980.28			121,980.28
6151 Current Act 511 Earned Income Taxes	6,128,474.77	364,534.36	347,476.66	6,111,417.07
6153 Current Act 511 Real Estate Transfer Taxes	1,129,733.07	76,727.15	96,865.19	1,149,871.11
6155 Current Act 511 Business Privilege Taxes	2,647,839.44	50,138.01	119,212.18	2,716,913.61
6411 Delinquent Real Estate Taxes	829,324.78	105,701.32	150,754.13	874,377.59
6412 Delinquent Interim Real Estate Taxes	10,251.44	3,525.38	39.11	6,765.17
6420 Delinquent Per Capita Taxes, Section 679	12,542.60	6,543.03	3,825.50	9,825.07
6440 Delinquent Local Enabling Taxes - Flat Rate Assessments	12,542.60	6,543.03	3,825.50	9,825.07
6455 Delinquent Act 511 Business Privilege Taxes	145,878.39			145,878.39
6500 Earnings on Investments	489,751.11			
6700 Revenues from LEA Activities	355,740.55			
6810 Revenue from Local Governmental Units	43,526.40			
6832 Federal IDEA Revenue Received as Pass Through	977,229.48			
6836 Federal ARRA Race to the Top Revenue Received as Pass Through	10,000.00			
6910 Rentals	228,882.68			
6920 Contributions and Donations from Private Sources	94,440.17			
6941 Regular Day School Tuition	3,239.80			
6942 Summer School Tuition	53,300.00			
6944 Receipts from Other LEAs in Pennsylvania - Education	526,351.42			
6949 Other Tuition from Patrons	10,725.00			
6961 Transportation Services Provided Other Pennsylvania LEAs	70,163.36			
6969 All Other Services Provided Other Governments	66,650.19			
6980 Revenue from Community Services Activities	115,319.00			
6991 Refunds of a Prior Year Expenditure	78,221.38			
6992 Energy Efficiency Revenues and Incentives	20,193.19			
6999 Other Revenues Not Specified Above	302,069.63			
TOTAL Revenue from Local Sources	\$77,926,569.33	\$613,712.28	\$721,998.27	\$74,589,051.96

**Revenue Reported
In Current Year**

Revenue from State Sources

7110 Basic Education Funding	7,938,055.85		
7160 Tuition for Orphans Subsidy	86,718.81		
7271 Special Education funds for School-Aged Pupils	2,387,113.09		
7299 Program Revenues Not Listed Previously in the 7200 Series	882.54		
7311 Pupil Transportation Subsidy	810,260.40		
7312 Nonpublic and Charter School Pupil Transportation Subsidy	95,865.00		
7320 Rental and Sinking Fund Payments / Building Reimbursement Subsidy	1,480,969.74		
7330 Health Services (Medical, Dental, Nurse, Act 25)	114,135.03		
7340 State Property Tax Reduction Allocation	1,383,056.04		
7505 Ready to Learn Block Grant	579,495.00		
7810 State Share of Social Security and Medicare Taxes	1,634,731.77		
7820 State Share of Retirement Contributions	7,138,206.54		
TOTAL Revenue from State Sources	\$23,649,489.81		

**Revenue Reported
In Current Year**

Revenue from Federal Sources

8514 NCLB, Title I - Improving the Academic Achievement of the Disadvantaged	763,274.53		
8515 NCLB, Title II - Preparing, Training and Recruiting High Quality Teachers and Principals	152,856.00		
8516 NCLB, Title III - Language Instruction for Limited English Proficient and Immigrant Students	43,067.23		
8517 NCLB, Title IV - 21st Century Schools	14,305.74		
8810 School-Based Access Medicaid Reimbursement Program (SBAP) Reimbursements (Access)	315,000.00		
8820 Medical Assistance Reimbursement for Administrative Claiming (Quarterly) Program	20,947.56		
TOTAL Revenue from Federal Sources	\$1,309,451.06		

**Revenue Reported
In Current Year**

Other Financing Sources

9350 Enterprise Fund Transfers	211,192.25			
9400 Sale of or Compensation for Loss of Fixed Assets	33,481.00			
TOTAL Other Financing Sources	\$244,673.25			
TOTAL FROM ALL SOURCES	\$103,130,183.45	\$613,712.28	\$721,998.27	\$74,589,051.96

Revenue from Local Sources	77,926,569.33
Revenue from State Sources	23,649,489.81
Revenue from Federal Sources	1,309,451.06
Other Financing Sources	244,673.25
TOTAL FROM ALL SOURCES	\$103,130,183.45

General Fund (10)

	<u>Total</u>
1000 Instruction	
100 Personnel Services – Salaries	
100 Personnel Services – Salaries	31,939,998.99
Total Personnel Services – Salaries	\$31,939,998.99
200 Personnel Services – Employee Benefits	
210 Group Insurance – Contracted Provider	53,947.86
220 Social Security Contributions	2,363,941.47
230 PSERS Retirement Contributions	10,191,162.46
250 Unemployment Compensation	3,822.70
260 Workers’ Compensation	198,372.78
270 Group Insurance – Self-Insurance	5,844,156.17
280 Other Post-Employment Benefits (OPEB)	40,131.20
Total Personnel Services – Employee Benefits	\$18,695,534.64
300 Purchased Professional and Technical Services	
322 Professional Educational Services – Ius	336,147.47
323 Professional Educational Services – Other Educational Agencies	140,675.00
324 Professional Educational Services – Employee Training and Development Services	8,410.82
330 Other Professional Services	760,167.99
340 Technical Services	653.99
390 Other Purchased Professional and Technical Services	28,354.14
Total Purchased Professional and Technical Services	\$1,274,409.41
400 Purchased Property Services	
410 Cleaning Services	205.44
430 Repairs and Maintenance Services	206,090.62
440 Rentals	107,579.15
Total Purchased Property Services	\$313,875.21
500 Other Purchased Services	
510 Student Transportation Services	9,710.90
520 Insurance – General	4,855.60
530 Communications	1,080.00
561 Tuition To Other School Districts Within the State	251,375.09
562 Tuition To Pennsylvania Charter Schools	707,499.34
563 Tuition To Nonpublic Schools	2,337,314.55
564 Tuition To Career and Technology Centers	1,353,279.30
567 Tuition To Approved Private Schools (APS) and PA Chartered Schools for the Deaf and Blind	97,110.57
568 Tuition To Private Residential Rehabilitative Institutions (PRRI) [In-State] and Detention Centers	72,107.21
580 Travel	13,723.57
594 IU Payment By Withholding for Institutionalized Children’s Programs – Special Classes	285.07
Total Other Purchased Services	\$4,848,341.20
600 Supplies	
610 General Supplies	885,940.52
620 Energy	7,512.74
630 Food	9,818.71
640 Books and Periodicals	377,014.00
650 Supplies & Fees – Technology Related	236,606.76

General Fund (10)

		<u>Total</u>
1000 Instruction		
Total Supplies		\$1,516,892.73
700 Property		
752 Capital Equipment – Original and Additional		72,055.04
Total Property		\$72,055.04
800 Other Objects		
810 Dues and Fees		6,364.20
890 Miscellaneous Expenditures		4,789.50
Total Other Objects		\$11,153.70
Total 1000 Instruction		\$58,672,260.92

General Fund (10)

1100 Regular Programs – Elementary / Secondary

	<u>Elementary</u>	<u>Secondary</u>	<u>Federal</u>	<u>Total</u>
100 Personnel Services – Salaries				
100 Personnel Services – Salaries	13,131,742.88	9,993,883.66	677,319.37	23,802,945.91
Total Personnel Services – Salaries	\$13,131,742.88	\$9,993,883.66	\$677,319.37	\$23,802,945.91
200 Personnel Services – Employee Benefits				
210 Group Insurance – Contracted Provider	23,913.54	17,859.48		41,773.02
220 Social Security Contributions	1,011,011.44	738,621.63	8,312.38	1,757,945.45
230 PSERS Retirement Contributions	4,349,645.93	3,178,200.24	49,390.42	7,577,236.59
250 Unemployment Compensation	238.91	1,207.35		1,446.26
260 Workers' Compensation	85,704.43	62,284.86	37.35	148,026.64
270 Group Insurance – Self-Insurance	2,699,114.53	1,973,893.69		4,673,008.22
280 Other Post-Employment Benefits (OPEB)	16,383.50	15,107.70		31,491.20
Total Personnel Services – Employee Benefits	\$8,186,012.28	\$5,987,174.95	\$57,740.15	\$14,230,927.38
300 Purchased Professional and Technical Services				
322 Professional Educational Services – Ius	397.52	10,378.84		10,776.36
323 Professional Educational Services – Other Educational Agencies	9,749.47	90,350.53		100,100.00
324 Professional Educational Services – Employee Training and Development Services	1,639.49	563.98		2,203.47
330 Other Professional Services	10,958.16	5,584.86		16,543.02
340 Technical Services	326.99	327.00		653.99
390 Other Purchased Professional and Technical Services	23,462.95	3,845.49		27,308.44
Total Purchased Professional and Technical Services	\$46,534.58	\$111,050.70		\$157,585.28
400 Purchased Property Services				
410 Cleaning Services		205.44		205.44
430 Repairs and Maintenance Services	113,247.58	87,145.79		200,393.37
440 Rentals	52,791.43	53,962.72		106,754.15
Total Purchased Property Services	\$166,039.01	\$141,313.95		\$307,352.96
500 Other Purchased Services				
510 Student Transportation Services	2,821.23	6,889.67		9,710.90
520 Insurance – General	786.56	2,219.74		3,006.30
530 Communications	220.61	859.39		1,080.00
561 Tuition To Other School Districts Within the State	6,237.98	7,360.23		13,598.21
562 Tuition To Pennsylvania Charter Schools	110,164.66	331,390.26		441,554.92
568 Tuition To Private Residential Rehabilitative Institutions (PRRI) [In-State] and Detention Centers		10,764.43		10,764.43
580 Travel	1,482.55	6,090.53		7,573.08
Total Other Purchased Services	\$121,713.59	\$365,574.25		\$487,287.84
600 Supplies				
610 General Supplies	368,960.66	397,107.91	24,781.03	790,849.60
620 Energy	1,863.18	4,111.53		5,974.71
630 Food	6,427.07	1,748.64		8,175.71
640 Books and Periodicals	138,457.35	46,139.77	163,144.22	347,741.34
650 Supplies & Fees – Technology Related	95,956.78	71,891.80	2,719.08	170,567.66
Total Supplies	\$611,665.04	\$520,999.65	\$190,644.33	\$1,323,309.02
700 Property				
752 Capital Equipment – Original and Additional	10,208.24	61,846.80		72,055.04

General Fund (10)

1100 Regular Programs – Elementary / Secondary	<u>Elementary</u>	<u>Secondary</u>	<u>Federal</u>	<u>Total</u>
Total Property	\$10,208.24	\$61,846.80		\$72,055.04
800 Other Objects				
810 Dues and Fees	2,064.00	3,872.24		5,936.24
890 Miscellaneous Expenditures	1,125.97	2,693.53		3,819.50
Total Other Objects	\$3,189.97	\$6,565.77		\$9,755.74
Total 1100 Regular Programs – Elementary / Secondary	\$22,277,105.59	\$17,188,409.73	\$925,703.85	\$40,391,219.17

General Fund (10)

1110 Regular Programs

	<u>Elementary</u>	<u>Secondary</u>	<u>Federal</u>	<u>Total</u>
100 Personnel Services – Salaries				
100 Personnel Services – Salaries	13,131,742.88	9,993,883.66	677,319.37	23,802,945.91
Total Personnel Services – Salaries	\$13,131,742.88	\$9,993,883.66	\$677,319.37	\$23,802,945.91
200 Personnel Services – Employee Benefits				
210 Group Insurance – Contracted Provider	23,913.54	17,859.48		41,773.02
220 Social Security Contributions	1,011,011.44	738,621.63	8,312.38	1,757,945.45
230 PSERS Retirement Contributions	4,349,645.93	3,178,200.24	49,390.42	7,577,236.59
250 Unemployment Compensation	238.91	1,207.35		1,446.26
260 Workers' Compensation	85,704.43	62,284.86	37.35	148,026.64
270 Group Insurance – Self-Insurance	2,699,114.53	1,973,893.69		4,673,008.22
280 Other Post-Employment Benefits (OPEB)	16,383.50	15,107.70		31,491.20
Total Personnel Services – Employee Benefits	\$8,186,012.28	\$5,987,174.95	\$57,740.15	\$14,230,927.38
300 Purchased Professional and Technical Services				
322 Professional Educational Services – lus	397.52	10,378.84		10,776.36
323 Professional Educational Services – Other Educational Agencies	9,749.47	90,350.53		100,100.00
324 Professional Educational Services – Employee Training and Development Services	1,639.49	563.98		2,203.47
330 Other Professional Services	10,958.16	5,584.86		16,543.02
340 Technical Services	326.99	327.00		653.99
390 Other Purchased Professional and Technical Services	23,462.95	3,845.49		27,308.44
Total Purchased Professional and Technical Services	\$46,534.58	\$111,050.70		\$157,585.28
400 Purchased Property Services				
410 Cleaning Services		205.44		205.44
430 Repairs and Maintenance Services	113,247.58	87,145.79		200,393.37
440 Rentals	52,791.43	53,962.72		106,754.15
Total Purchased Property Services	\$166,039.01	\$141,313.95		\$307,352.96
500 Other Purchased Services				
510 Student Transportation Services	2,821.23	6,889.67		9,710.90
520 Insurance – General	786.56	2,219.74		3,006.30
530 Communications	220.61	859.39		1,080.00
561 Tuition To Other School Districts Within the State	6,237.98	7,360.23		13,598.21
562 Tuition To Pennsylvania Charter Schools	110,164.66	331,390.26		441,554.92
568 Tuition To Private Residential Rehabilitative Institutions (PRRI) [In-State] and Detention Centers		10,764.43		10,764.43
580 Travel	1,482.55	6,090.53		7,573.08
Total Other Purchased Services	\$121,713.59	\$365,574.25		\$487,287.84
600 Supplies				
610 General Supplies	368,960.66	397,107.91	24,781.03	790,849.60
620 Energy	1,863.18	4,111.53		5,974.71
630 Food	6,427.07	1,748.64		8,175.71
640 Books and Periodicals	138,457.35	46,139.77	163,144.22	347,741.34
650 Supplies & Fees – Technology Related	95,956.78	71,891.80	2,719.08	170,567.66
Total Supplies	\$611,665.04	\$520,999.65	\$190,644.33	\$1,323,309.02
700 Property				
752 Capital Equipment – Original and Additional	10,208.24	61,846.80		72,055.04

General Fund (10)

1110 Regular Programs

	<u>Elementary</u>	<u>Secondary</u>	<u>Federal</u>	<u>Total</u>
Total Property	\$10,208.24	\$61,846.80		\$72,055.04
800 Other Objects				
810 Dues and Fees	2,064.00	3,872.24		5,936.24
890 Miscellaneous Expenditures	1,125.97	2,693.53		3,819.50
Total Other Objects	\$3,189.97	\$6,565.77		\$9,755.74
Total 1110 Regular Programs	\$22,277,105.59	\$17,188,409.73	\$925,703.85	\$40,391,219.17

General Fund (10)

1200 Special Programs – Elementary / Secondary

	<u>Elementary</u>	<u>Secondary</u>	<u>Federal</u>	<u>Total</u>
100 Personnel Services – Salaries				
100 Personnel Services – Salaries	3,850,687.22	2,484,627.15	827,371.17	7,162,685.54
Total Personnel Services – Salaries	\$3,850,687.22	\$2,484,627.15	\$827,371.17	\$7,162,685.54
200 Personnel Services – Employee Benefits				
210 Group Insurance – Contracted Provider	6,003.62	4,651.24		10,654.86
220 Social Security Contributions	316,282.97	216,529.11	976.23	533,788.31
230 PSERS Retirement Contributions	1,298,003.37	870,043.95	131,929.92	2,299,977.24
250 Unemployment Compensation	932.17	1,444.27		2,376.44
260 Workers' Compensation	26,383.18	17,952.02		44,335.20
270 Group Insurance – Self-Insurance	543,471.39	473,062.98		1,016,534.37
280 Other Post-Employment Benefits (OPEB)	5,424.25	1,595.75		7,020.00
Total Personnel Services – Employee Benefits	\$2,196,500.95	\$1,585,279.32	\$132,906.15	\$3,914,686.42
300 Purchased Professional and Technical Services				
322 Professional Educational Services – Ius	193,708.01	117,163.10	14,500.00	325,371.11
323 Professional Educational Services – Other Educational Agencies	8,896.13	31,678.87		40,575.00
324 Professional Educational Services – Employee Training and Development Services	3,301.49	310.86		3,612.35
330 Other Professional Services	361,513.52	366,112.45		727,625.97
390 Other Purchased Professional and Technical Services		1,045.70		1,045.70
Total Purchased Professional and Technical Services	\$567,419.15	\$516,310.98	\$14,500.00	\$1,098,230.13
400 Purchased Property Services				
430 Repairs and Maintenance Services	1,674.82	1,099.58		2,774.40
Total Purchased Property Services	\$1,674.82	\$1,099.58		\$2,774.40
500 Other Purchased Services				
520 Insurance – General	60.54	588.76		649.30
561 Tuition To Other School Districts Within the State	10,823.88	205,299.63		216,123.51
562 Tuition To Pennsylvania Charter Schools	22,420.53	243,523.89		265,944.42
563 Tuition To Nonpublic Schools	665,564.60	1,499,878.48		2,165,443.08
564 Tuition To Career and Technology Centers		55,936.16		55,936.16
567 Tuition To Approved Private Schools (APS) and PA Chartered Schools for the Deaf and Blind	4,880.02	92,230.55		97,110.57
568 Tuition To Private Residential Rehabilitative Institutions (PRRI) [In-State] and Detention Centers	13,425.09	47,917.69		61,342.78
580 Travel	3,038.16	2,624.92		5,663.08
594 IU Payment By Withholding for Institutionalized Children’s Programs – Special Classes	99.29	185.78		285.07
Total Other Purchased Services	\$720,312.11	\$2,148,185.86		\$2,868,497.97
600 Supplies				
610 General Supplies	37,569.15	16,720.14		54,289.29
620 Energy	143.40	1,394.63		1,538.03
630 Food	566.15	1,076.85		1,643.00
640 Books and Periodicals	24,555.35	1,746.02		26,301.37
650 Supplies & Fees – Technology Related	14,504.62	50,234.48		64,739.10
Total Supplies	\$77,338.67	\$71,172.12		\$148,510.79
800 Other Objects				
810 Dues and Fees	307.90	120.06		427.96

General Fund (10)

1200 Special Programs – Elementary / Secondary

800 Other Objects

890 Miscellaneous Expenditures

Total Other Objects

Total 1200 Special Programs – Elementary / Secondary

Elementary

Secondary

Federal

Total

970.00

970.00

\$1,277.90

\$120.06

\$1,397.96

\$7,415,210.82

\$6,806,795.07

\$974,777.32

\$15,196,783.21

General Fund (10)

1210 Life Skills Support

	<u>Elementary</u>	<u>Secondary</u>	<u>Federal</u>	<u>Total</u>
100 Personnel Services – Salaries				
100 Personnel Services – Salaries	408,479.96	272,299.59	12,600.00	693,379.55
Total Personnel Services – Salaries	\$408,479.96	\$272,299.59	\$12,600.00	\$693,379.55
200 Personnel Services – Employee Benefits				
210 Group Insurance – Contracted Provider	428.36	284.44		712.80
220 Social Security Contributions	31,038.74	20,513.42	963.95	52,516.11
230 PSERS Retirement Contributions	132,617.83	87,322.97	2,051.90	221,992.70
250 Unemployment Compensation	(175.33)			(175.33)
260 Workers' Compensation	2,605.59	1,676.29		4,281.88
270 Group Insurance – Self-Insurance	16,448.34	27,947.71		44,396.05
280 Other Post-Employment Benefits (OPEB)	1,620.00			1,620.00
Total Personnel Services – Employee Benefits	\$184,583.53	\$137,744.83	\$3,015.85	\$325,344.21
300 Purchased Professional and Technical Services				
330 Other Professional Services	30,798.14	51,851.54		82,649.68
390 Other Purchased Professional and Technical Services		793.70		793.70
Total Purchased Professional and Technical Services	\$30,798.14	\$52,645.24		\$83,443.38
500 Other Purchased Services				
563 Tuition To Nonpublic Schools		7,166.25		7,166.25
564 Tuition To Career and Technology Centers		55,936.16		55,936.16
Total Other Purchased Services		\$63,102.41		\$63,102.41
600 Supplies				
610 General Supplies	1,597.37	1,454.13		3,051.50
630 Food		81.06		81.06
650 Supplies & Fees – Technology Related		196.46		196.46
Total Supplies	\$1,597.37	\$1,731.65		\$3,329.02
Total 1210 Life Skills Support	\$625,459.00	\$527,523.72	\$15,615.85	\$1,168,598.57

General Fund (10)

1220 Sensory Support

	<u>Elementary</u>	<u>Secondary</u>	<u>Federal</u>	<u>Total</u>
100 Personnel Services – Salaries				
100 Personnel Services – Salaries	394,440.24	200,501.85	7,288.75	602,230.84
Total Personnel Services – Salaries	\$394,440.24	\$200,501.85	\$7,288.75	\$602,230.84
200 Personnel Services – Employee Benefits				
210 Group Insurance – Contracted Provider	743.85	312.66		1,056.51
220 Social Security Contributions	29,279.15	15,127.29		44,406.44
230 PSERS Retirement Contributions	128,962.87	65,702.86	1,088.64	195,754.37
260 Workers' Compensation	2,467.39	1,183.97		3,651.36
270 Group Insurance – Self-Insurance	86,472.48	24,347.85		110,820.33
280 Other Post-Employment Benefits (OPEB)	2,184.25	1,055.75		3,240.00
Total Personnel Services – Employee Benefits	\$250,109.99	\$107,730.38	\$1,088.64	\$358,929.01
300 Purchased Professional and Technical Services				
322 Professional Educational Services – Ius	108,208.81	2,058.68		110,267.49
324 Professional Educational Services – Employee Training and Development Services	237.60			237.60
330 Other Professional Services	127,418.66	13,147.28		140,565.94
Total Purchased Professional and Technical Services	\$235,865.07	\$15,205.96		\$251,071.03
400 Purchased Property Services				
430 Repairs and Maintenance Services	1,561.76			1,561.76
Total Purchased Property Services	\$1,561.76			\$1,561.76
500 Other Purchased Services				
580 Travel	152.75	95.04		247.79
Total Other Purchased Services	\$152.75	\$95.04		\$247.79
600 Supplies				
610 General Supplies	8,009.39	1,783.45		9,792.84
640 Books and Periodicals	47.97	89.76		137.73
650 Supplies & Fees – Technology Related	27.59	51.61		79.20
Total Supplies	\$8,084.95	\$1,924.82		\$10,009.77
Total 1220 Sensory Support	\$890,214.76	\$325,458.05	\$8,377.39	\$1,224,050.20

General Fund (10)

1230 Emotional Support

	<u>Elementary</u>	<u>Secondary</u>	<u>Federal</u>	<u>Total</u>
100 Personnel Services – Salaries				
100 Personnel Services – Salaries	1,147,282.36	755,900.39	368,456.70	2,271,639.45
Total Personnel Services – Salaries	\$1,147,282.36	\$755,900.39	\$368,456.70	\$2,271,639.45
200 Personnel Services – Employee Benefits				
210 Group Insurance – Contracted Provider	1,740.33	1,371.21		3,111.54
220 Social Security Contributions	106,202.49	64,100.92	12.28	170,315.69
230 PSERS Retirement Contributions	408,936.32	261,696.04	58,044.18	728,676.54
250 Unemployment Compensation	259.55	596.33		855.88
260 Workers' Compensation	8,853.72	5,379.48		14,233.20
270 Group Insurance – Self-Insurance	145,318.20	133,503.02		278,821.22
280 Other Post-Employment Benefits (OPEB)	1,620.00			1,620.00
Total Personnel Services – Employee Benefits	\$672,930.61	\$466,647.00	\$58,056.46	\$1,197,634.07
300 Purchased Professional and Technical Services				
322 Professional Educational Services – lus	28,826.42	61,378.88		90,205.30
324 Professional Educational Services – Employee Training and Development Services	323.03	276.97		600.00
330 Other Professional Services	2,701.40	2,076.48		4,777.88
390 Other Purchased Professional and Technical Services		252.00		252.00
Total Purchased Professional and Technical Services	\$31,850.85	\$63,984.33		\$95,835.18
500 Other Purchased Services				
561 Tuition To Other School Districts Within the State	10,823.88	201,091.95		211,915.83
563 Tuition To Nonpublic Schools	542,847.19	1,332,035.38		1,874,882.57
567 Tuition To Approved Private Schools (APS) and PA Chartered Schools for the Deaf and Blind	4,815.60	9,010.40		13,826.00
568 Tuition To Private Residential Rehabilitative Institutions (PRRI) [In-State] and Detention Centers	12,934.39	36,631.64		49,566.03
580 Travel	1,721.02	2,136.69		3,857.71
Total Other Purchased Services	\$573,142.08	\$1,580,906.06		\$2,154,048.14
600 Supplies				
610 General Supplies	13,020.03	5,276.11		18,296.14
630 Food	510.15	515.15		1,025.30
640 Books and Periodicals	9,543.71	132.11		9,675.82
Total Supplies	\$23,073.89	\$5,923.37		\$28,997.26
Total 1230 Emotional Support	\$2,448,279.79	\$2,873,361.15	\$426,513.16	\$5,748,154.10

General Fund (10)

1240 Academic Support

	<u>Elementary</u>	<u>Secondary</u>	<u>Federal</u>	<u>Total</u>
100 Personnel Services – Salaries				
100 Personnel Services – Salaries	1,587,655.55	1,017,589.80	299,289.83	2,904,535.18
Total Personnel Services – Salaries	\$1,587,655.55	\$1,017,589.80	\$299,289.83	\$2,904,535.18
200 Personnel Services – Employee Benefits				
210 Group Insurance – Contracted Provider	2,492.07	2,264.31		4,756.38
220 Social Security Contributions	121,817.88	92,846.53		214,664.41
230 PSERS Retirement Contributions	518,917.17	367,292.48	48,091.77	934,301.42
260 Workers' Compensation	10,197.17	7,857.69		18,054.86
270 Group Insurance – Self-Insurance	257,121.37	239,586.65		496,708.02
Total Personnel Services – Employee Benefits	\$910,545.66	\$709,847.66	\$48,091.77	\$1,668,485.09
300 Purchased Professional and Technical Services				
322 Professional Educational Services – lus	17,443.18	40,602.39		58,045.57
324 Professional Educational Services – Employee Training and Development Services	1,865.75			1,865.75
330 Other Professional Services	44,634.80	87,702.18		132,336.98
Total Purchased Professional and Technical Services	\$63,943.73	\$128,304.57		\$192,248.30
500 Other Purchased Services				
561 Tuition To Other School Districts Within the State		4,207.68		4,207.68
563 Tuition To Nonpublic Schools	44,173.15	160,676.85		204,850.00
568 Tuition To Private Residential Rehabilitative Institutions (PRRI) [In-State] and Detention Centers	490.70	11,286.05		11,776.75
580 Travel	544.99	391.46		936.45
Total Other Purchased Services	\$45,208.84	\$176,562.04		\$221,770.88
600 Supplies				
610 General Supplies	3,200.38	4,345.00		7,545.38
630 Food	20.55	278.32		298.87
640 Books and Periodicals	14,963.67	1,524.15		16,487.82
650 Supplies & Fees – Technology Related	14,477.03	49,986.41		64,463.44
Total Supplies	\$32,661.63	\$56,133.88		\$88,795.51
800 Other Objects				
810 Dues and Fees	296.00			296.00
890 Miscellaneous Expenditures	970.00			970.00
Total Other Objects	\$1,266.00			\$1,266.00
Total 1240 Academic Support	\$2,641,281.41	\$2,088,437.95	\$347,381.60	\$5,077,100.96

General Fund (10)

1241 Learning Support – Public

	<u>Elementary</u>	<u>Secondary</u>	<u>Federal</u>	<u>Total</u>
100 Personnel Services – Salaries				
100 Personnel Services – Salaries	1,366,543.13	812,162.41	299,289.83	2,477,995.37
Total Personnel Services – Salaries	\$1,366,543.13	\$812,162.41	\$299,289.83	\$2,477,995.37
200 Personnel Services – Employee Benefits				
210 Group Insurance – Contracted Provider	2,195.33	1,961.93		4,157.26
220 Social Security Contributions	105,425.01	77,947.26		183,372.27
230 PSERS Retirement Contributions	447,287.64	300,384.77	48,091.77	795,764.18
260 Workers' Compensation	8,914.76	6,666.18		15,580.94
270 Group Insurance – Self-Insurance	211,201.19	210,533.39		421,734.58
Total Personnel Services – Employee Benefits	\$775,023.93	\$597,493.53	\$48,091.77	\$1,420,609.23
300 Purchased Professional and Technical Services				
322 Professional Educational Services – lus	17,443.18	40,602.39		58,045.57
324 Professional Educational Services – Employee Training and Development Services	1,265.75			1,265.75
330 Other Professional Services	44,634.80	87,702.18		132,336.98
Total Purchased Professional and Technical Services	\$63,343.73	\$128,304.57		\$191,648.30
500 Other Purchased Services				
561 Tuition To Other School Districts Within the State		4,207.68		4,207.68
563 Tuition To Nonpublic Schools	44,173.15	160,676.85		204,850.00
568 Tuition To Private Residential Rehabilitative Institutions (PRRI) [In-State] and Detention Centers	490.70	11,286.05		11,776.75
580 Travel		391.46		391.46
Total Other Purchased Services	\$44,663.85	\$176,562.04		\$221,225.89
600 Supplies				
610 General Supplies	3,189.59	4,203.39		7,392.98
630 Food	20.55	278.32		298.87
640 Books and Periodicals	14,564.93	1,450.24		16,015.17
650 Supplies & Fees – Technology Related	14,373.24	49,792.20		64,165.44
Total Supplies	\$32,148.31	\$55,724.15		\$87,872.46
Total 1241 Learning Support – Public	\$2,281,722.95	\$1,770,246.70	\$347,381.60	\$4,399,351.25

General Fund (10)

1243 Gifted Support

	<u>Elementary</u>	<u>Secondary</u>	<u>Federal</u>	<u>Total</u>
100 Personnel Services – Salaries				
100 Personnel Services – Salaries	221,112.42	205,427.39		426,539.81
Total Personnel Services – Salaries	\$221,112.42	\$205,427.39		\$426,539.81
200 Personnel Services – Employee Benefits				
210 Group Insurance – Contracted Provider	296.74	302.38		599.12
220 Social Security Contributions	16,392.87	14,899.27		31,292.14
230 PSERS Retirement Contributions	71,629.53	66,907.71		138,537.24
260 Workers' Compensation	1,282.41	1,191.51		2,473.92
270 Group Insurance – Self-Insurance	45,920.18	29,053.26		74,973.44
Total Personnel Services – Employee Benefits	\$135,521.73	\$112,354.13		\$247,875.86
300 Purchased Professional and Technical Services				
324 Professional Educational Services – Employee Training and Development Services	600.00			600.00
Total Purchased Professional and Technical Services	\$600.00			\$600.00
500 Other Purchased Services				
580 Travel	544.99			544.99
Total Other Purchased Services	\$544.99			\$544.99
600 Supplies				
610 General Supplies	10.79	141.61		152.40
640 Books and Periodicals	398.74	73.91		472.65
650 Supplies & Fees – Technology Related	103.79	194.21		298.00
Total Supplies	\$513.32	\$409.73		\$923.05
800 Other Objects				
810 Dues and Fees	296.00			296.00
890 Miscellaneous Expenditures	970.00			970.00
Total Other Objects	\$1,266.00			\$1,266.00
Total 1243 Gifted Support	\$359,558.46	\$318,191.25		\$677,749.71

General Fund (10)

1260 Physical Support

	<u>Elementary</u>	<u>Secondary</u>	<u>Federal</u>	<u>Total</u>
100 Personnel Services – Salaries				
100 Personnel Services – Salaries	586.25	586.25	3,841.25	5,013.75
Total Personnel Services – Salaries	\$586.25	\$586.25	\$3,841.25	\$5,013.75
200 Personnel Services – Employee Benefits				
220 Social Security Contributions	44.86	338.72		383.58
230 PSERS Retirement Contributions	190.95	713.90	522.95	1,427.80
260 Workers’ Compensation	3.41	25.69		29.10
Total Personnel Services – Employee Benefits	\$239.22	\$1,078.31	\$522.95	\$1,840.48
300 Purchased Professional and Technical Services				
324 Professional Educational Services – Employee Training and Development Services	130.00			130.00
330 Other Professional Services	6,480.00	2,880.00		9,360.00
Total Purchased Professional and Technical Services	\$6,610.00	\$2,880.00		\$9,490.00
500 Other Purchased Services				
580 Travel	104.11			104.11
Total Other Purchased Services	\$104.11			\$104.11
600 Supplies				
610 General Supplies	6,367.49	661.83		7,029.32
Total Supplies	\$6,367.49	\$661.83		\$7,029.32
Total 1260 Physical Support	\$13,907.07	\$5,206.39	\$4,364.20	\$23,477.66

General Fund (10)

1270 Multi-Handicapped Support

	<u>Elementary</u>	<u>Secondary</u>	<u>Federal</u>	<u>Total</u>
100 Personnel Services – Salaries				
100 Personnel Services – Salaries	129,635.84	170,087.99	10,036.25	309,760.08
Total Personnel Services – Salaries	\$129,635.84	\$170,087.99	\$10,036.25	\$309,760.08
200 Personnel Services – Employee Benefits				
210 Group Insurance – Contracted Provider	132.74	239.98		372.72
220 Social Security Contributions	10,006.15	13,130.73		23,136.88
230 PSERS Retirement Contributions	42,690.24	56,319.87	1,634.40	100,644.51
260 Workers' Compensation	773.37	1,023.23		1,796.60
270 Group Insurance – Self-Insurance	16,650.34	33,721.54		50,371.88
280 Other Post-Employment Benefits (OPEB)		540.00		540.00
Total Personnel Services – Employee Benefits	\$70,252.84	\$104,975.35	\$1,634.40	\$176,862.59
300 Purchased Professional and Technical Services				
322 Professional Educational Services – Ius	19,204.60	13,123.15		32,327.75
330 Other Professional Services	146,854.04	205,270.11		352,124.15
Total Purchased Professional and Technical Services	\$166,058.64	\$218,393.26		\$384,451.90
500 Other Purchased Services				
563 Tuition To Nonpublic Schools	78,544.26			78,544.26
Total Other Purchased Services	\$78,544.26			\$78,544.26
600 Supplies				
610 General Supplies	5,257.55	2,062.33		7,319.88
630 Food	35.45	202.32		237.77
Total Supplies	\$5,293.00	\$2,264.65		\$7,557.65
Total 1270 Multi-Handicapped Support	\$449,784.58	\$495,721.25	\$11,670.65	\$957,176.48

General Fund (10)

1280 Early Intervention Support

300 Purchased Professional and Technical Services

322 Professional Educational Services – lus

Total Purchased Professional and Technical Services

Total 1280 Early Intervention Support

	<u>Elementary</u>	<u>Secondary</u>	<u>Federal</u>	<u>Total</u>
	20,025.00		14,500.00	34,525.00
	\$20,025.00		\$14,500.00	\$34,525.00
	\$20,025.00		\$14,500.00	\$34,525.00

General Fund (10)

1290 Special Programs - Other Support

	<u>Elementary</u>	<u>Secondary</u>	<u>Federal</u>	<u>Total</u>
100 Personnel Services – Salaries				
100 Personnel Services – Salaries	182,607.02	67,661.28	125,858.39	376,126.69
Total Personnel Services – Salaries	\$182,607.02	\$67,661.28	\$125,858.39	\$376,126.69
200 Personnel Services – Employee Benefits				
210 Group Insurance – Contracted Provider	466.27	178.64		644.91
220 Social Security Contributions	17,893.70	10,471.50		28,365.20
230 PSERS Retirement Contributions	65,687.99	30,995.83	20,496.08	117,179.90
250 Unemployment Compensation	847.95	847.94		1,695.89
260 Workers' Compensation	1,482.53	805.67		2,288.20
270 Group Insurance – Self-Insurance	21,460.66	13,956.21		35,416.87
Total Personnel Services – Employee Benefits	\$107,839.10	\$57,255.79	\$20,496.08	\$185,590.97
300 Purchased Professional and Technical Services				
323 Professional Educational Services – Other Educational Agencies	8,896.13	31,678.87		40,575.00
324 Professional Educational Services – Employee Training and Development Services	745.11	33.89		779.00
330 Other Professional Services	2,626.48	3,184.86		5,811.34
Total Purchased Professional and Technical Services	\$12,267.72	\$34,897.62		\$47,165.34
400 Purchased Property Services				
430 Repairs and Maintenance Services	113.06	1,099.58		1,212.64
Total Purchased Property Services	\$113.06	\$1,099.58		\$1,212.64
500 Other Purchased Services				
520 Insurance – General	60.54	588.76		649.30
562 Tuition To Pennsylvania Charter Schools	22,420.53	243,523.89		265,944.42
567 Tuition To Approved Private Schools (APS) and PA Chartered Schools for the Deaf and Blind	64.42	83,220.15		83,284.57
580 Travel	515.29	1.73		517.02
594 IU Payment By Withholding for Institutionalized Children’s Programs – Special Classes	99.29	185.78		285.07
Total Other Purchased Services	\$23,160.07	\$327,520.31		\$350,680.38
600 Supplies				
610 General Supplies	116.94	1,137.29		1,254.23
620 Energy	143.40	1,394.63		1,538.03
Total Supplies	\$260.34	\$2,531.92		\$2,792.26
800 Other Objects				
810 Dues and Fees	11.90	120.06		131.96
Total Other Objects	\$11.90	\$120.06		\$131.96
Total 1290 Special Programs - Other Support	\$326,259.21	\$491,086.56	\$146,354.47	\$963,700.24

General Fund (10)

1300 Vocational Education

	<u>Elementary</u>	<u>Secondary</u>	<u>Federal</u>	<u>Total</u>
100 Personnel Services – Salaries				
100 Personnel Services – Salaries		913,226.29		913,226.29
Total Personnel Services – Salaries		\$913,226.29		\$913,226.29
200 Personnel Services – Employee Benefits				
210 Group Insurance – Contracted Provider		1,506.85		1,506.85
220 Social Security Contributions		67,572.76		67,572.76
230 PSERS Retirement Contributions		294,578.07		294,578.07
260 Workers' Compensation		5,656.31		5,656.31
270 Group Insurance – Self-Insurance		153,905.62		153,905.62
280 Other Post-Employment Benefits (OPEB)		1,620.00		1,620.00
Total Personnel Services – Employee Benefits		\$524,839.61		\$524,839.61
300 Purchased Professional and Technical Services				
324 Professional Educational Services – Employee Training and Development Services		50.00		50.00
Total Purchased Professional and Technical Services		\$50.00		\$50.00
400 Purchased Property Services				
430 Repairs and Maintenance Services		2,922.85		2,922.85
Total Purchased Property Services		\$2,922.85		\$2,922.85
500 Other Purchased Services				
564 Tuition To Career and Technology Centers		1,297,343.14		1,297,343.14
580 Travel		452.93		452.93
Total Other Purchased Services		\$1,297,796.07		\$1,297,796.07
600 Supplies				
610 General Supplies		40,801.63		40,801.63
640 Books and Periodicals		2,971.29		2,971.29
650 Supplies & Fees – Technology Related		1,300.00		1,300.00
Total Supplies		\$45,072.92		\$45,072.92
Total 1300 Vocational Education		\$2,783,907.74		\$2,783,907.74

General Fund (10)

1400 Other Instructional Programs – Elementary / Secondary

	<u>Elementary</u>	<u>Secondary</u>	<u>Federal</u>	<u>Total</u>
100 Personnel Services – Salaries				
100 Personnel Services – Salaries		61,141.25		61,141.25
Total Personnel Services – Salaries		\$61,141.25		\$61,141.25
200 Personnel Services – Employee Benefits				
210 Group Insurance – Contracted Provider		13.13		13.13
220 Social Security Contributions		4,634.95		4,634.95
230 PSERS Retirement Contributions		19,370.56		19,370.56
260 Workers' Compensation		354.63		354.63
270 Group Insurance – Self-Insurance		707.96		707.96
Total Personnel Services – Employee Benefits		\$25,081.23		\$25,081.23
400 Purchased Property Services				
440 Rentals		825.00		825.00
Total Purchased Property Services		\$825.00		\$825.00
500 Other Purchased Services				
520 Insurance – General		1,200.00		1,200.00
561 Tuition To Other School Districts Within the State		21,653.37		21,653.37
563 Tuition To Nonpublic Schools		171,871.47		171,871.47
580 Travel		34.48		34.48
Total Other Purchased Services		\$194,759.32		\$194,759.32
Total 1400 Other Instructional Programs – Elementary / Secondary		\$281,806.80		\$281,806.80

General Fund (10)

1410 Drivers' Education

100 Personnel Services – Salaries

	<u>Elementary</u>	<u>Secondary</u>	<u>Federal</u>	<u>Total</u>
100 Personnel Services – Salaries		22,323.00		22,323.00
Total Personnel Services – Salaries		\$22,323.00		\$22,323.00

200 Personnel Services – Employee Benefits

220 Social Security Contributions		1,686.98		1,686.98
230 PSERS Retirement Contributions		7,270.62		7,270.62
260 Workers' Compensation		129.45		129.45
Total Personnel Services – Employee Benefits		\$9,087.05		\$9,087.05

400 Purchased Property Services

440 Rentals		825.00		825.00
Total Purchased Property Services		\$825.00		\$825.00

500 Other Purchased Services

520 Insurance – General		1,200.00		1,200.00
Total Other Purchased Services		\$1,200.00		\$1,200.00

Total 1410 Drivers' Education

Total 1410 Drivers' Education		\$33,435.05		\$33,435.05
--------------------------------------	--	--------------------	--	--------------------

General Fund (10)

1420 Summer School

100 Personnel Services – Salaries

100 Personnel Services – Salaries

Total Personnel Services – Salaries

200 Personnel Services – Employee Benefits

210 Group Insurance – Contracted Provider

220 Social Security Contributions

230 PSERS Retirement Contributions

260 Workers' Compensation

270 Group Insurance – Self-Insurance

Total Personnel Services – Employee Benefits

Total 1420 Summer School

	<u>Elementary</u>	<u>Secondary</u>	<u>Federal</u>	<u>Total</u>
		32,009.00		32,009.00
		\$32,009.00		\$32,009.00
		13.13		13.13
		2,441.01		2,441.01
		9,904.89		9,904.89
		185.69		185.69
		707.96		707.96
		\$13,252.68		\$13,252.68
		\$45,261.68		\$45,261.68

General Fund (10)

1430 Homebound Instruction

	<u>Elementary</u>	<u>Secondary</u>	<u>Federal</u>	<u>Total</u>
--	-------------------	------------------	----------------	--------------

100 Personnel Services – Salaries

100 Personnel Services – Salaries		3,309.25		3,309.25
-----------------------------------	--	----------	--	----------

Total Personnel Services – Salaries

		\$3,309.25		\$3,309.25
--	--	-------------------	--	-------------------

200 Personnel Services – Employee Benefits

220 Social Security Contributions		245.41		245.41
-----------------------------------	--	--------	--	--------

230 PSERS Retirement Contributions		1,055.05		1,055.05
------------------------------------	--	----------	--	----------

260 Workers’ Compensation		19.21		19.21
---------------------------	--	-------	--	-------

Total Personnel Services – Employee Benefits

		\$1,319.67		\$1,319.67
--	--	-------------------	--	-------------------

500 Other Purchased Services

580 Travel		34.48		34.48
------------	--	-------	--	-------

Total Other Purchased Services

		\$34.48		\$34.48
--	--	----------------	--	----------------

Total 1430 Homebound Instruction

		\$4,663.40		\$4,663.40
--	--	-------------------	--	-------------------

General Fund (10)

1440 Alternative Regular Education Programs

Elementary

Secondary

Federal

Total

500 Other Purchased Services

561 Tuition To Other School Districts Within the State

21,653.37

21,653.37

563 Tuition To Nonpublic Schools

171,871.47

171,871.47

Total Other Purchased Services

\$193,524.84

\$193,524.84

Total 1440 Alternative Regular Education Programs

\$193,524.84

\$193,524.84

General Fund (10)

1441 Adjudicated / Court-Placed Programs

Elementary

Secondary

Federal

Total

500 Other Purchased Services

561 Tuition To Other School Districts Within the State

21,653.37

21,653.37

Total Other Purchased Services

\$21,653.37

\$21,653.37

Total 1441 Adjudicated / Court-Placed Programs

\$21,653.37

\$21,653.37

General Fund (10)

1442 Alternative Education Programs

500 Other Purchased Services

563 Tuition To Nonpublic Schools

Total Other Purchased Services

Total 1442 Alternative Education Programs

Elementary

Secondary

Federal

Total

171,871.47

171,871.47

\$171,871.47

\$171,871.47

\$171,871.47

\$171,871.47

General Fund (10)

1450 Instructional Programs Outside the Established School Day

100 Personnel Services – Salaries

100 Personnel Services – Salaries

Total Personnel Services – Salaries

200 Personnel Services – Employee Benefits

220 Social Security Contributions

230 PSERS Retirement Contributions

260 Workers' Compensation

Total Personnel Services – Employee Benefits

Total 1450 Instructional Programs Outside the Established School Day

	<u>Elementary</u>	<u>Secondary</u>	<u>Federal</u>	<u>Total</u>
		3,500.00		3,500.00
Total Personnel Services – Salaries		\$3,500.00		\$3,500.00
		261.55		261.55
		1,140.00		1,140.00
		20.28		20.28
Total Personnel Services – Employee Benefits		\$1,421.83		\$1,421.83
Total 1450 Instructional Programs Outside the Established School Day		\$4,921.83		\$4,921.83

General Fund (10)

1500 Nonpublic School Programs

300 Purchased Professional and Technical Services

324 Professional Educational Services – Employee Training and Development Services

330 Other Professional Services

	<u>Elementary</u>	<u>Secondary</u>	<u>Federal</u>	<u>Total</u>
			2,545.00	2,545.00
			15,999.00	15,999.00
Total Purchased Professional and Technical Services			\$18,544.00	\$18,544.00
Total 1500 Nonpublic School Programs			\$18,544.00	\$18,544.00

General Fund (10)

2000 Support Services

Total

100 Personnel Services – Salaries

100 Personnel Services – Salaries 12,210,293.24

Total Personnel Services – Salaries \$12,210,293.24

200 Personnel Services – Employee Benefits

210 Group Insurance – Contracted Provider 47,703.64

220 Social Security Contributions 915,332.75

230 PSERS Retirement Contributions 3,831,663.04

240 Tuition Reimbursement 323,172.54

250 Unemployment Compensation 4,374.75

260 Workers' Compensation 73,675.83

270 Group Insurance – Self-Insurance 2,587,603.70

280 Other Post-Employment Benefits (OPEB) 78,251.92

299 All Other Employee Benefits 65,122.00

Total Personnel Services – Employee Benefits \$7,926,900.17

300 Purchased Professional and Technical Services

324 Professional Educational Services – Employee Training and Development Services 87,078.27

330 Other Professional Services 584,618.05

340 Technical Services 125,794.30

390 Other Purchased Professional and Technical Services 8,155.00

Total Purchased Professional and Technical Services \$805,645.62

400 Purchased Property Services

410 Cleaning Services 126,194.87

420 Utility Services 229,585.36

430 Repairs and Maintenance Services 639,208.16

440 Rentals 538,999.88

460 Extermination Services 7,334.00

Total Purchased Property Services \$1,541,322.27

500 Other Purchased Services

513 Contracted Carriers 196,764.46

516 Student Transportation Services From the IU 40,376.64

520 Insurance – General 55,877.00

522 Automotive Liability Insurance 63,429.59

523 General Property and Liability Insurance 193,935.00

530 Communications 201,100.74

549 Other Advertising/Public Relations 7,410.45

580 Travel 42,461.47

591 Services Purchased Locally 9,495.96

595 IU Payments By Withholding 90,122.52

599 Other Miscellaneous Purchased Services 31,330.10

Total Other Purchased Services \$932,303.93

600 Supplies

610 General Supplies 1,221,759.51

620 Energy 1,536,006.72

630 Food 28,953.34

General Fund (10)

2000 Support Services

Total

600 Supplies

640 Books and Periodicals	113,142.44
650 Supplies & Fees – Technology Related	289,863.66

Total Supplies	\$3,189,725.67
-----------------------	-----------------------

700 Property

752 Capital Equipment – Original and Additional	19,605.23
762 Capitalized Equipment - Replacement	25,865.30
766 Capitalized Technology Hardware and Equipment– Replacement	57,628.96

Total Property	\$103,099.49
-----------------------	---------------------

800 Other Objects

810 Dues and Fees	78,378.82
890 Miscellaneous Expenditures	10,523.01

Total Other Objects	\$88,901.83
----------------------------	--------------------

Total 2000 Support Services	\$26,798,192.22
------------------------------------	------------------------

General Fund (10)

2100 Support Services – Students

100 Personnel Services – Salaries

	<u>Elementary</u>	<u>Secondary</u>	<u>Federal</u>	<u>Total</u>
100 Personnel Services – Salaries	879,414.33	1,084,319.22	2,108.75	2,069,041.50
Total Personnel Services – Salaries	\$879,414.33	\$1,084,319.22	\$2,108.75	\$2,069,041.50

200 Personnel Services – Employee Benefits

210 Group Insurance – Contracted Provider	1,946.53	2,366.50		4,572.23
220 Social Security Contributions	65,153.03	80,419.88		153,319.31
230 PSERS Retirement Contributions	285,679.08	352,041.46	343.41	671,819.86
260 Workers' Compensation	5,229.63	6,531.68		12,370.90
270 Group Insurance – Self-Insurance	180,200.02	217,227.44		433,980.68
280 Other Post-Employment Benefits (OPEB)	4,055.41	4,546.91		22,756.08
299 All Other Employee Benefits	600.00	600.00		1,200.00
Total Personnel Services – Employee Benefits	\$542,863.70	\$663,733.87	\$343.41	\$1,300,019.06

300 Purchased Professional and Technical Services

324 Professional Educational Services – Employee Training and Development Services	3,312.85	4,166.06		7,968.91
330 Other Professional Services	4,541.84	13,267.16		17,809.00
390 Other Purchased Professional and Technical Services		8,155.00		8,155.00
Total Purchased Professional and Technical Services	\$7,854.69	\$25,588.22		\$33,932.91

400 Purchased Property Services

430 Repairs and Maintenance Services		1,509.44		1,509.44
440 Rentals		1,332.96		1,332.96
Total Purchased Property Services		\$2,842.40		\$2,842.40

500 Other Purchased Services

580 Travel	1,912.05	1,451.65		3,941.68
Total Other Purchased Services	\$1,912.05	\$1,451.65		\$3,941.68

600 Supplies

610 General Supplies	15,479.99	10,414.95		26,714.35
630 Food	58.29			129.91
640 Books and Periodicals	319.47			319.47
650 Supplies & Fees – Technology Related	576.60			576.60
Total Supplies	\$16,434.35	\$10,414.95		\$27,740.33

800 Other Objects

810 Dues and Fees	579.50	1,466.50		2,106.00
Total Other Objects	\$579.50	\$1,466.50		\$2,106.00

Total 2100 Support Services – Students

Total 2100 Support Services – Students	\$1,449,058.62	\$1,789,816.81	\$2,452.16	\$3,439,623.88
---	-----------------------	-----------------------	-------------------	-----------------------

General Fund (10)

2110 Supervision of Student Services

	<u>Elementary</u>	<u>Secondary</u>	<u>Federal</u>	<u>Total</u>
100 Personnel Services – Salaries				
100 Personnel Services – Salaries	88,224.10	88,224.05		176,448.15
Total Personnel Services – Salaries	\$88,224.10	\$88,224.05		\$176,448.15
200 Personnel Services – Employee Benefits				
210 Group Insurance – Contracted Provider	588.59	587.89		1,176.48
220 Social Security Contributions	6,575.89	6,575.72		13,151.61
230 PSERS Retirement Contributions	28,695.44	28,695.19		57,390.63
260 Workers' Compensation	513.42	513.35		1,026.77
270 Group Insurance – Self-Insurance	18,723.74	18,723.50		37,447.24
280 Other Post-Employment Benefits (OPEB)	3,491.16	3,491.16		6,982.32
299 All Other Employee Benefits	600.00	600.00		1,200.00
Total Personnel Services – Employee Benefits	\$59,188.24	\$59,186.81		\$118,375.05
300 Purchased Professional and Technical Services				
324 Professional Educational Services – Employee Training and Development Services	3,265.83	3,870.83		7,136.66
330 Other Professional Services	1,625.00	1,625.00		3,250.00
Total Purchased Professional and Technical Services	\$4,890.83	\$5,495.83		\$10,386.66
500 Other Purchased Services				
580 Travel	1,259.49	1,215.33		2,474.82
Total Other Purchased Services	\$1,259.49	\$1,215.33		\$2,474.82
600 Supplies				
610 General Supplies	606.93	1,130.70		1,737.63
640 Books and Periodicals	13.77			13.77
Total Supplies	\$620.70	\$1,130.70		\$1,751.40
800 Other Objects				
810 Dues and Fees	579.50	719.50		1,299.00
Total Other Objects	\$579.50	\$719.50		\$1,299.00
Total 2110 Supervision of Student Services	\$154,762.86	\$155,972.22		\$310,735.08

General Fund (10)

2111 Supervision of Student Services – Head of Component

	<u>Elementary</u>	<u>Secondary</u>	<u>Federal</u>	<u>Total</u>
100 Personnel Services – Salaries				
100 Personnel Services – Salaries	88,224.10	88,224.05		176,448.15
Total Personnel Services – Salaries	\$88,224.10	\$88,224.05		\$176,448.15
200 Personnel Services – Employee Benefits				
210 Group Insurance – Contracted Provider	588.59	587.89		1,176.48
220 Social Security Contributions	6,575.89	6,575.72		13,151.61
230 PSERS Retirement Contributions	28,695.44	28,695.19		57,390.63
260 Workers' Compensation	513.42	513.35		1,026.77
270 Group Insurance – Self-Insurance	18,723.74	18,723.50		37,447.24
280 Other Post-Employment Benefits (OPEB)	3,491.16	3,491.16		6,982.32
299 All Other Employee Benefits	600.00	600.00		1,200.00
Total Personnel Services – Employee Benefits	\$59,188.24	\$59,186.81		\$118,375.05
300 Purchased Professional and Technical Services				
324 Professional Educational Services – Employee Training and Development Services	3,265.83	3,870.83		7,136.66
330 Other Professional Services	1,625.00	1,625.00		3,250.00
Total Purchased Professional and Technical Services	\$4,890.83	\$5,495.83		\$10,386.66
500 Other Purchased Services				
580 Travel	1,259.49	1,215.33		2,474.82
Total Other Purchased Services	\$1,259.49	\$1,215.33		\$2,474.82
600 Supplies				
610 General Supplies	606.93	1,130.70		1,737.63
640 Books and Periodicals	13.77			13.77
Total Supplies	\$620.70	\$1,130.70		\$1,751.40
800 Other Objects				
810 Dues and Fees	579.50	719.50		1,299.00
Total Other Objects	\$579.50	\$719.50		\$1,299.00
Total 2111 Supervision of Student Services – Head of Component	\$154,762.86	\$155,972.22		\$310,735.08

General Fund (10)

2120 Guidance Services

	<u>Elementary</u>	<u>Secondary</u>	<u>Federal</u>	<u>Total</u>
100 Personnel Services – Salaries				
100 Personnel Services – Salaries	456,965.16	711,700.46		1,168,665.62
Total Personnel Services – Salaries	\$456,965.16	\$711,700.46		\$1,168,665.62
200 Personnel Services – Employee Benefits				
210 Group Insurance – Contracted Provider	820.70	1,306.82		2,127.52
220 Social Security Contributions	33,699.07	53,066.37		86,765.44
230 PSERS Retirement Contributions	148,294.86	230,827.44		379,122.30
260 Workers' Compensation	2,650.64	4,368.77		7,019.41
270 Group Insurance – Self-Insurance	102,716.84	142,188.32		244,905.16
280 Other Post-Employment Benefits (OPEB)	564.25	1,055.75		1,620.00
Total Personnel Services – Employee Benefits	\$288,746.36	\$432,813.47		\$721,559.83
300 Purchased Professional and Technical Services				
330 Other Professional Services	2,916.84	11,642.16		14,559.00
390 Other Purchased Professional and Technical Services		8,155.00		8,155.00
Total Purchased Professional and Technical Services	\$2,916.84	\$19,797.16		\$22,714.00
400 Purchased Property Services				
430 Repairs and Maintenance Services		1,509.44		1,509.44
440 Rentals		1,332.96		1,332.96
Total Purchased Property Services		\$2,842.40		\$2,842.40
500 Other Purchased Services				
580 Travel		76.30		76.30
Total Other Purchased Services		\$76.30		\$76.30
600 Supplies				
610 General Supplies	1,047.77	982.12		2,029.89
630 Food	58.29			58.29
640 Books and Periodicals	305.70			305.70
Total Supplies	\$1,411.76	\$982.12		\$2,393.88
800 Other Objects				
810 Dues and Fees		447.00		447.00
Total Other Objects		\$447.00		\$447.00
Total 2120 Guidance Services	\$750,040.12	\$1,168,658.91		\$1,918,699.03

General Fund (10)

2130 Attendance Services

Elementary

Secondary

Federal

Total

100 Personnel Services – Salaries

100 Personnel Services – Salaries

293.76

Total Personnel Services – Salaries

\$293.76

200 Personnel Services – Employee Benefits

220 Social Security Contributions

22.48

260 Workers' Compensation

1.71

Total Personnel Services – Employee Benefits

\$24.19

Total 2130 Attendance Services

\$317.95

General Fund (10)

2140 Psychological Services

	<u>Elementary</u>	<u>Secondary</u>	<u>Federal</u>	<u>Total</u>
100 Personnel Services – Salaries				
100 Personnel Services – Salaries	334,225.07	284,394.71		618,619.78
Total Personnel Services – Salaries	\$334,225.07	\$284,394.71		\$618,619.78
200 Personnel Services – Employee Benefits				
210 Group Insurance – Contracted Provider	537.24	471.79		1,009.03
220 Social Security Contributions	24,878.07	20,777.79		45,655.86
230 PSERS Retirement Contributions	108,688.78	92,518.83		201,207.61
260 Workers' Compensation	2,065.57	1,649.56		3,715.13
270 Group Insurance – Self-Insurance	58,759.44	56,315.62		115,075.06
Total Personnel Services – Employee Benefits	\$194,929.10	\$171,733.59		\$366,662.69
300 Purchased Professional and Technical Services				
324 Professional Educational Services – Employee Training and Development Services	47.02	295.23		342.25
Total Purchased Professional and Technical Services	\$47.02	\$295.23		\$342.25
500 Other Purchased Services				
580 Travel	652.56	160.02		812.58
Total Other Purchased Services	\$652.56	\$160.02		\$812.58
600 Supplies				
610 General Supplies	13,825.29	8,302.13		22,127.42
650 Supplies & Fees – Technology Related	576.60			576.60
Total Supplies	\$14,401.89	\$8,302.13		\$22,704.02
800 Other Objects				
810 Dues and Fees		300.00		300.00
Total Other Objects		\$300.00		\$300.00
Total 2140 Psychological Services	\$544,255.64	\$465,185.68		\$1,009,441.32

General Fund (10)

2160 Social Work Services

100 Personnel Services – Salaries

	<u>Elementary</u>	<u>Secondary</u>	<u>Federal</u>	<u>Total</u>
100 Personnel Services – Salaries			2,108.75	67,302.75
Total Personnel Services – Salaries			\$2,108.75	\$67,302.75

200 Personnel Services – Employee Benefits

210 Group Insurance – Contracted Provider				129.60
220 Social Security Contributions				4,927.83
230 PSERS Retirement Contributions			343.41	21,920.45
260 Workers' Compensation				390.36
270 Group Insurance – Self-Insurance				20,416.26
280 Other Post-Employment Benefits (OPEB)				6,982.32
Total Personnel Services – Employee Benefits			\$343.41	\$54,766.82

300 Purchased Professional and Technical Services

324 Professional Educational Services – Employee Training and Development Services				195.00
Total Purchased Professional and Technical Services				\$195.00

600 Supplies

610 General Supplies				210.41
630 Food				71.62
Total Supplies				\$282.03

Total 2160 Social Work Services

			\$2,452.16	\$122,546.60
--	--	--	-------------------	---------------------

General Fund (10)

	<u>Elementary</u>	<u>Secondary</u>	<u>Federal</u>	<u>Total</u>
2170 Student Accounting Services				
100 Personnel Services – Salaries				
100 Personnel Services – Salaries				37,711.44
Total Personnel Services – Salaries				\$37,711.44
200 Personnel Services – Employee Benefits				
210 Group Insurance – Contracted Provider				129.60
220 Social Security Contributions				2,796.09
230 PSERS Retirement Contributions				12,178.87
260 Workers' Compensation				217.52
270 Group Insurance – Self-Insurance				16,136.96
280 Other Post-Employment Benefits (OPEB)				7,171.44
Total Personnel Services – Employee Benefits				\$38,630.48
300 Purchased Professional and Technical Services				
324 Professional Educational Services – Employee Training and Development Services				295.00
Total Purchased Professional and Technical Services				\$295.00
500 Other Purchased Services				
580 Travel				577.98
Total Other Purchased Services				\$577.98
600 Supplies				
610 General Supplies				609.00
Total Supplies				\$609.00
800 Other Objects				
810 Dues and Fees				60.00
Total Other Objects				\$60.00
Total 2170 Student Accounting Services				\$77,883.90

General Fund (10)

2200 Support Services – Instructional Staff

	<u>Elementary</u>	<u>Secondary</u>	<u>Federal</u>	<u>Total</u>
100 Personnel Services – Salaries				
100 Personnel Services – Salaries	1,127,882.47	1,096,768.39		2,224,650.86
Total Personnel Services – Salaries	\$1,127,882.47	\$1,096,768.39		\$2,224,650.86
200 Personnel Services – Employee Benefits				
210 Group Insurance – Contracted Provider	4,534.25	5,671.16		10,205.41
220 Social Security Contributions	84,292.50	82,291.03		166,583.53
230 PSERS Retirement Contributions	363,875.47	349,150.67		713,026.14
240 Tuition Reimbursement	165,704.87	112,700.25		278,405.12
260 Workers' Compensation	6,786.77	6,619.78		13,406.55
270 Group Insurance – Self-Insurance	201,060.99	186,167.30		387,228.29
280 Other Post-Employment Benefits (OPEB)	564.25	1,055.75		1,620.00
299 All Other Employee Benefits	3,218.81	4,443.19		7,662.00
Total Personnel Services – Employee Benefits	\$830,037.91	\$748,099.13		\$1,578,137.04
300 Purchased Professional and Technical Services				
324 Professional Educational Services – Employee Training and Development Services	25,507.45	25,535.64	7,254.00	58,297.09
330 Other Professional Services	5,018.88	7,291.87	12,346.22	24,656.97
340 Technical Services	4,998.16	6,122.88		11,121.04
Total Purchased Professional and Technical Services	\$35,524.49	\$38,950.39	\$19,600.22	\$94,075.10
400 Purchased Property Services				
430 Repairs and Maintenance Services	78,702.27	98,462.95		177,165.22
440 Rentals	235,211.57	286,734.51		521,946.08
Total Purchased Property Services	\$313,913.84	\$385,197.46		\$699,111.30
500 Other Purchased Services				
520 Insurance – General	5,075.00	6,217.00		11,292.00
530 Communications	31,701.44	37,340.73		69,042.17
580 Travel	11,654.33	14,104.78		25,759.11
Total Other Purchased Services	\$48,430.77	\$57,662.51		\$106,093.28
600 Supplies				
610 General Supplies	244,989.54	277,298.57		522,288.11
630 Food	2,910.32	4,279.97		7,190.29
640 Books and Periodicals	65,379.81	42,957.78		108,337.59
650 Supplies & Fees – Technology Related	113,170.38	152,223.18		265,393.56
Total Supplies	\$426,450.05	\$476,759.50		\$903,209.55
700 Property				
752 Capital Equipment – Original and Additional		9,460.00		9,460.00
766 Capitalized Technology Hardware and Equipment– Replacement	25,866.71	31,762.25		57,628.96
Total Property	\$25,866.71	\$41,222.25		\$67,088.96
800 Other Objects				
810 Dues and Fees	4,883.17	4,284.48		9,167.65
890 Miscellaneous Expenditures	367.13			367.13
Total Other Objects	\$5,250.30	\$4,284.48		\$9,534.78
Total 2200 Support Services – Instructional Staff	\$2,813,356.54	\$2,848,944.11	\$19,600.22	\$5,681,900.87

General Fund (10)

	<u>Elementary</u>	<u>Secondary</u>	<u>Federal</u>	<u>Total</u>
2220 Technology Support Services				
100 Personnel Services – Salaries				
100 Personnel Services – Salaries	100,830.66	213,990.34		314,821.00
Total Personnel Services – Salaries	\$100,830.66	\$213,990.34		\$314,821.00
200 Personnel Services – Employee Benefits				
210 Group Insurance – Contracted Provider	173.39	1,215.80		1,389.19
220 Social Security Contributions	7,615.10	16,002.99		23,618.09
230 PSERS Retirement Contributions	31,668.20	68,523.94		100,192.14
260 Workers' Compensation	584.69	1,243.75		1,828.44
270 Group Insurance – Self-Insurance	7,983.75	31,270.03		39,253.78
299 All Other Employee Benefits		1,200.00		1,200.00
Total Personnel Services – Employee Benefits	\$48,025.13	\$119,456.51		\$167,481.64
300 Purchased Professional and Technical Services				
330 Other Professional Services			5,750.84	5,750.84
Total Purchased Professional and Technical Services			\$5,750.84	\$5,750.84
500 Other Purchased Services				
580 Travel	949.59	1,163.16		2,112.75
Total Other Purchased Services	\$949.59	\$1,163.16		\$2,112.75
Total 2220 Technology Support Services	\$149,805.38	\$334,610.01	\$5,750.84	\$490,166.23

General Fund (10)

2240 Computer-Assisted Instruction Support Services

	<u>Elementary</u>	<u>Secondary</u>	<u>Federal</u>	<u>Total</u>
100 Personnel Services – Salaries				
100 Personnel Services – Salaries	265,780.41	265,780.07		531,560.48
Total Personnel Services – Salaries	\$265,780.41	\$265,780.07		\$531,560.48
200 Personnel Services – Employee Benefits				
210 Group Insurance – Contracted Provider	1,836.44	1,834.22		3,670.66
220 Social Security Contributions	19,933.66	19,931.19		39,864.85
230 PSERS Retirement Contributions	81,538.65	81,537.78		163,076.43
260 Workers' Compensation	1,668.47	1,666.77		3,335.24
270 Group Insurance – Self-Insurance	46,987.75	46,986.04		93,973.79
299 All Other Employee Benefits	1,775.00	1,775.00		3,550.00
Total Personnel Services – Employee Benefits	\$153,739.97	\$153,731.00		\$307,470.97
300 Purchased Professional and Technical Services				
324 Professional Educational Services – Employee Training and Development Services	1,377.96	1,688.04		3,066.00
340 Technical Services	2,396.40	2,935.64		5,332.04
Total Purchased Professional and Technical Services	\$3,774.36	\$4,623.68		\$8,398.04
400 Purchased Property Services				
430 Repairs and Maintenance Services	78,097.20	96,135.96		174,233.16
440 Rentals	229,592.02	281,378.39		510,970.41
Total Purchased Property Services	\$307,689.22	\$377,514.35		\$685,203.57
500 Other Purchased Services				
520 Insurance – General	5,075.00	6,217.00		11,292.00
530 Communications	31,701.44	37,340.73		69,042.17
580 Travel	631.92	774.15		1,406.07
Total Other Purchased Services	\$37,408.36	\$44,331.88		\$81,740.24
600 Supplies				
610 General Supplies	214,159.23	261,923.64		476,082.87
630 Food	704.66	785.73		1,490.39
640 Books and Periodicals	100.43	123.04		223.47
650 Supplies & Fees – Technology Related	98,833.86	119,150.94		217,984.80
Total Supplies	\$313,798.18	\$381,983.35		\$695,781.53
700 Property				
752 Capital Equipment – Original and Additional		9,460.00		9,460.00
766 Capitalized Technology Hardware and Equipment– Replacement	25,866.71	31,762.25		57,628.96
Total Property	\$25,866.71	\$41,222.25		\$67,088.96
800 Other Objects				
810 Dues and Fees	110.05	133.50		243.55
Total Other Objects	\$110.05	\$133.50		\$243.55
Total 2240 Computer-Assisted Instruction Support Services	\$1,108,167.26	\$1,269,320.08		\$2,377,487.34

General Fund (10)

2250 School Library Services

	<u>Elementary</u>	<u>Secondary</u>	<u>Federal</u>	<u>Total</u>
100 Personnel Services – Salaries				
100 Personnel Services – Salaries	456,196.34	193,030.97		649,227.31
Total Personnel Services – Salaries	\$456,196.34	\$193,030.97		\$649,227.31
200 Personnel Services – Employee Benefits				
210 Group Insurance – Contracted Provider	734.25	290.98		1,025.23
220 Social Security Contributions	33,688.42	14,460.48		48,148.90
230 PSERS Retirement Contributions	152,523.34	62,026.42		214,549.76
260 Workers' Compensation	2,645.94	1,119.50		3,765.44
270 Group Insurance – Self-Insurance	102,388.21	25,518.86		127,907.07
280 Other Post-Employment Benefits (OPEB)	564.25	1,055.75		1,620.00
Total Personnel Services – Employee Benefits	\$292,544.41	\$104,471.99		\$397,016.40
300 Purchased Professional and Technical Services				
324 Professional Educational Services – Employee Training and Development Services	625.78	339.22		965.00
330 Other Professional Services	102.30	191.40		293.70
Total Purchased Professional and Technical Services	\$728.08	\$530.62		\$1,258.70
400 Purchased Property Services				
430 Repairs and Maintenance Services		1,585.71		1,585.71
Total Purchased Property Services		\$1,585.71		\$1,585.71
500 Other Purchased Services				
580 Travel	70.17	338.47		408.64
Total Other Purchased Services	\$70.17	\$338.47		\$408.64
600 Supplies				
610 General Supplies	11,418.79	8,895.39		20,314.18
640 Books and Periodicals	64,298.19	34,440.92		98,739.11
650 Supplies & Fees – Technology Related	13,845.74	32,453.90		46,299.64
Total Supplies	\$89,562.72	\$75,790.21		\$165,352.93
800 Other Objects				
810 Dues and Fees	4,005.23	3,234.47		7,239.70
Total Other Objects	\$4,005.23	\$3,234.47		\$7,239.70
Total 2250 School Library Services	\$843,106.95	\$378,982.44		\$1,222,089.39

General Fund (10)

2260 Instruction and Curriculum Development Services

	<u>Elementary</u>	<u>Secondary</u>	<u>Federal</u>	<u>Total</u>
100 Personnel Services – Salaries				
100 Personnel Services – Salaries	305,075.06	423,967.01		729,042.07
Total Personnel Services – Salaries	\$305,075.06	\$423,967.01		\$729,042.07
200 Personnel Services – Employee Benefits				
210 Group Insurance – Contracted Provider	1,790.17	2,330.16		4,120.33
220 Social Security Contributions	23,055.32	31,896.37		54,951.69
230 PSERS Retirement Contributions	98,145.28	137,062.53		235,207.81
260 Workers' Compensation	1,887.67	2,589.76		4,477.43
270 Group Insurance – Self-Insurance	43,701.28	82,392.37		126,093.65
299 All Other Employee Benefits	1,443.81	1,468.19		2,912.00
Total Personnel Services – Employee Benefits	\$170,023.53	\$257,739.38		\$427,762.91
300 Purchased Professional and Technical Services				
324 Professional Educational Services – Employee Training and Development Services	6,026.41	5,230.47		11,256.88
330 Other Professional Services	222.82	395.36		618.18
340 Technical Services	2,601.76	3,187.24		5,789.00
Total Purchased Professional and Technical Services	\$8,850.99	\$8,813.07		\$17,664.06
400 Purchased Property Services				
430 Repairs and Maintenance Services	605.07	741.28		1,346.35
440 Rentals	4,334.78	4,165.89		8,500.67
Total Purchased Property Services	\$4,939.85	\$4,907.17		\$9,847.02
500 Other Purchased Services				
580 Travel	1,499.26	1,557.62		3,056.88
Total Other Purchased Services	\$1,499.26	\$1,557.62		\$3,056.88
600 Supplies				
610 General Supplies	16,476.07	1,644.41		18,120.48
630 Food	676.88	1,365.43		2,042.31
640 Books and Periodicals	147.39	8,097.02		8,244.41
650 Supplies & Fees – Technology Related	390.72	518.28		909.00
Total Supplies	\$17,691.06	\$11,625.14		\$29,316.20
800 Other Objects				
810 Dues and Fees	597.70	597.70		1,195.40
890 Miscellaneous Expenditures	367.13			367.13
Total Other Objects	\$964.83	\$597.70		\$1,562.53
Total 2260 Instruction and Curriculum Development Services	\$509,044.58	\$709,207.09		\$1,218,251.67

General Fund (10)

	<u>Elementary</u>	<u>Secondary</u>	<u>Federal</u>	<u>Total</u>
2270 Instructional Staff Professional Development Services				
200 Personnel Services – Employee Benefits				
240 Tuition Reimbursement	165,704.87	112,700.25		278,405.12
Total Personnel Services – Employee Benefits	\$165,704.87	\$112,700.25		\$278,405.12
300 Purchased Professional and Technical Services				
324 Professional Educational Services – Employee Training and Development Services	17,477.30	18,277.91	7,254.00	43,009.21
330 Other Professional Services	4,693.76	6,705.11	5,968.38	17,367.25
Total Purchased Professional and Technical Services	\$22,171.06	\$24,983.02	\$13,222.38	\$60,376.46
400 Purchased Property Services				
440 Rentals	1,284.77	1,190.23		2,475.00
Total Purchased Property Services	\$1,284.77	\$1,190.23		\$2,475.00
500 Other Purchased Services				
580 Travel	8,503.39	10,271.38		18,774.77
Total Other Purchased Services	\$8,503.39	\$10,271.38		\$18,774.77
600 Supplies				
610 General Supplies	2,935.45	4,835.13		7,770.58
630 Food	1,528.78	2,128.81		3,657.59
640 Books and Periodicals	833.80	296.80		1,130.60
650 Supplies & Fees – Technology Related	100.06	100.06		200.12
Total Supplies	\$5,398.09	\$7,360.80		\$12,758.89
800 Other Objects				
810 Dues and Fees	170.19	318.81		489.00
Total Other Objects	\$170.19	\$318.81		\$489.00
Total 2270 Instructional Staff Professional Development Services	\$203,232.37	\$156,824.49	\$13,222.38	\$373,279.24

General Fund (10)

2280 Nonpublic Support Services

300 Purchased Professional and Technical Services

330 Other Professional Services

Total Purchased Professional and Technical Services

Total 2280 Nonpublic Support Services

Elementary

Secondary

Federal

Total

627.00

627.00

\$627.00

\$627.00

\$627.00

\$627.00

General Fund (10)

2300 Support Services – Administration

100 Personnel Services – Salaries

	<u>Elementary</u>	<u>Secondary</u>	<u>Federal</u>	<u>Total</u>
100 Personnel Services – Salaries	1,083,724.92	1,091,156.04		2,766,861.72
Total Personnel Services – Salaries	\$1,083,724.92	\$1,091,156.04		\$2,766,861.72

200 Personnel Services – Employee Benefits

210 Group Insurance – Contracted Provider	7,008.29	7,947.44		18,383.01
220 Social Security Contributions	81,361.88	81,353.54		208,533.45
230 PSERS Retirement Contributions	341,179.80	351,371.99		874,620.80
260 Workers' Compensation	6,400.10	6,885.18		17,171.78
270 Group Insurance – Self-Insurance	219,504.82	263,304.79		601,362.80
280 Other Post-Employment Benefits (OPEB)	12,254.07	6,740.43		25,976.82
299 All Other Employee Benefits	4,819.05	4,940.95		49,660.00
Total Personnel Services – Employee Benefits	\$672,528.01	\$722,544.32		\$1,795,708.66

300 Purchased Professional and Technical Services

324 Professional Educational Services – Employee Training and Development Services	1,053.92	407.97		4,828.82
330 Other Professional Services	269.49	711.46		398,235.62
Total Purchased Professional and Technical Services	\$1,323.41	\$1,119.43		\$403,064.44

400 Purchased Property Services

430 Repairs and Maintenance Services				1,035.34
440 Rentals		325.00		2,804.62
Total Purchased Property Services		\$325.00		\$3,839.96

500 Other Purchased Services

520 Insurance – General				44,485.00
530 Communications				20,337.26
549 Other Advertising/Public Relations				1,166.40
580 Travel	3,172.47	392.49		10,122.72
599 Other Miscellaneous Purchased Services		31,330.10		31,330.10
Total Other Purchased Services	\$3,172.47	\$31,722.59		\$107,441.48

600 Supplies

610 General Supplies	11,711.18	29,714.11		52,296.24
630 Food	4,299.26	11,861.13		21,283.41
640 Books and Periodicals	822.47	51.48		4,485.38
650 Supplies & Fees – Technology Related				23,893.50
Total Supplies	\$16,832.91	\$41,626.72		\$101,958.53

800 Other Objects

810 Dues and Fees	3,432.67	2,897.43		42,323.79
890 Miscellaneous Expenditures				10,135.88
Total Other Objects	\$3,432.67	\$2,897.43		\$52,459.67
Total 2300 Support Services – Administration	\$1,781,014.39	\$1,891,391.53		\$5,231,334.46

General Fund (10)

2310 Board Services

Elementary

Secondary

Federal

Total

300 Purchased Professional and Technical Services

324 Professional Educational Services – Employee Training and Development Services

109.93

330 Other Professional Services

3,410.00

Total Purchased Professional and Technical Services

\$3,519.93

500 Other Purchased Services

520 Insurance – General

35,707.00

549 Other Advertising/Public Relations

789.40

580 Travel

210.00

Total Other Purchased Services

\$36,706.40

600 Supplies

610 General Supplies

4,237.01

630 Food

651.96

650 Supplies & Fees – Technology Related

6,250.00

Total Supplies

\$11,138.97

800 Other Objects

810 Dues and Fees

15,625.00

Total Other Objects

\$15,625.00

Total 2310 Board Services

\$66,990.30

General Fund (10)

2330 Tax Assessment and Collection Services

Elementary

Secondary

Federal

Total

100 Personnel Services – Salaries

100 Personnel Services – Salaries

82,788.76

Total Personnel Services – Salaries

\$82,788.76

200 Personnel Services – Employee Benefits

210 Group Insurance – Contracted Provider

258.72

220 Social Security Contributions

6,116.33

230 PSERS Retirement Contributions

25,220.33

260 Workers' Compensation

449.13

270 Group Insurance – Self-Insurance

37,915.12

Total Personnel Services – Employee Benefits

\$69,959.63

300 Purchased Professional and Technical Services

324 Professional Educational Services – Employee Training and Development Services

200.00

330 Other Professional Services

15,293.97

Total Purchased Professional and Technical Services

\$15,493.97

500 Other Purchased Services

520 Insurance – General

8,778.00

530 Communications

20,337.26

549 Other Advertising/Public Relations

202.00

580 Travel

66.13

Total Other Purchased Services

\$29,383.39

800 Other Objects

810 Dues and Fees

322.50

Total Other Objects

\$322.50

Total 2330 Tax Assessment and Collection Services

\$197,948.25

General Fund (10)

2350 Legal and Accounting Services

Elementary

Secondary

Federal

Total

300 Purchased Professional and Technical Services

330 Other Professional Services

361,149.80

Total Purchased Professional and Technical Services

\$361,149.80

Total 2350 Legal and Accounting Services

\$361,149.80

General Fund (10)

2360 Office of the Superintendent / Executive Director Services

Elementary

Secondary

Federal

Total

100 Personnel Services – Salaries

100 Personnel Services – Salaries

400,271.44

Total Personnel Services – Salaries

\$400,271.44

200 Personnel Services – Employee Benefits

210 Group Insurance – Contracted Provider

2,073.00

220 Social Security Contributions

31,673.37

230 PSERS Retirement Contributions

122,000.06

260 Workers' Compensation

2,814.76

270 Group Insurance – Self-Insurance

61,144.41

280 Other Post-Employment Benefits (OPEB)

6,982.32

299 All Other Employee Benefits

38,700.00

Total Personnel Services – Employee Benefits

\$265,387.92

300 Purchased Professional and Technical Services

324 Professional Educational Services – Employee Training and Development Services

2,883.00

330 Other Professional Services

15,310.90

Total Purchased Professional and Technical Services

\$18,193.90

400 Purchased Property Services

430 Repairs and Maintenance Services

1,035.34

440 Rentals

2,479.62

Total Purchased Property Services

\$3,514.96

500 Other Purchased Services

580 Travel

5,644.98

Total Other Purchased Services

\$5,644.98

600 Supplies

610 General Supplies

5,148.77

630 Food

2,390.62

640 Books and Periodicals

3,416.95

650 Supplies & Fees – Technology Related

17,643.50

Total Supplies

\$28,599.84

800 Other Objects

810 Dues and Fees

13,493.51

890 Miscellaneous Expenditures

10,135.88

Total Other Objects

\$23,629.39

Total 2360 Office of the Superintendent / Executive Director Services

\$745,242.43

General Fund (10)

2370 Community Relations Services

Elementary Secondary Federal Total

100 Personnel Services – Salaries

100 Personnel Services – Salaries 108,920.56

Total Personnel Services – Salaries \$108,920.56

200 Personnel Services – Employee Benefits

210 Group Insurance – Contracted Provider 1,095.56

220 Social Security Contributions 8,028.33

230 PSERS Retirement Contributions 34,848.62

260 Workers' Compensation 622.61

270 Group Insurance – Self-Insurance 19,493.66

299 All Other Employee Benefits 1,200.00

Total Personnel Services – Employee Benefits \$65,288.78

300 Purchased Professional and Technical Services

324 Professional Educational Services – Employee Training and Development Services 174.00

330 Other Professional Services 2,090.00

Total Purchased Professional and Technical Services \$2,264.00

500 Other Purchased Services

549 Other Advertising/Public Relations 175.00

580 Travel 636.65

Total Other Purchased Services \$811.65

600 Supplies

610 General Supplies 1,485.17

630 Food 2,080.44

640 Books and Periodicals 194.48

Total Supplies \$3,760.09

800 Other Objects

810 Dues and Fees 6,552.68

Total Other Objects \$6,552.68

Total 2370 Community Relations Services \$187,597.76

General Fund (10)

2380 Office of the Principal Services

	<u>Elementary</u>	<u>Secondary</u>	<u>Federal</u>	<u>Total</u>
100 Personnel Services – Salaries				
100 Personnel Services – Salaries	1,083,724.92	1,091,156.04		2,174,880.96
Total Personnel Services – Salaries	\$1,083,724.92	\$1,091,156.04		\$2,174,880.96
200 Personnel Services – Employee Benefits				
210 Group Insurance – Contracted Provider	7,008.29	7,947.44		14,955.73
220 Social Security Contributions	81,361.88	81,353.54		162,715.42
230 PSERS Retirement Contributions	341,179.80	351,371.99		692,551.79
260 Workers' Compensation	6,400.10	6,885.18		13,285.28
270 Group Insurance – Self-Insurance	219,504.82	263,304.79		482,809.61
280 Other Post-Employment Benefits (OPEB)	12,254.07	6,740.43		18,994.50
299 All Other Employee Benefits	4,819.05	4,940.95		9,760.00
Total Personnel Services – Employee Benefits	\$672,528.01	\$722,544.32		\$1,395,072.33
300 Purchased Professional and Technical Services				
324 Professional Educational Services – Employee Training and Development Services	1,053.92	407.97		1,461.89
330 Other Professional Services	269.49	711.46		980.95
Total Purchased Professional and Technical Services	\$1,323.41	\$1,119.43		\$2,442.84
400 Purchased Property Services				
440 Rentals		325.00		325.00
Total Purchased Property Services		\$325.00		\$325.00
500 Other Purchased Services				
580 Travel	3,172.47	392.49		3,564.96
599 Other Miscellaneous Purchased Services		31,330.10		31,330.10
Total Other Purchased Services	\$3,172.47	\$31,722.59		\$34,895.06
600 Supplies				
610 General Supplies	11,711.18	29,714.11		41,425.29
630 Food	4,299.26	11,861.13		16,160.39
640 Books and Periodicals	822.47	51.48		873.95
Total Supplies	\$16,832.91	\$41,626.72		\$58,459.63
800 Other Objects				
810 Dues and Fees	3,432.67	2,897.43		6,330.10
Total Other Objects	\$3,432.67	\$2,897.43		\$6,330.10
Total 2380 Office of the Principal Services	\$1,781,014.39	\$1,891,391.53		\$3,672,405.92

General Fund (10)

	<u>Elementary</u>	<u>Secondary</u>	<u>Federal</u>	<u>Total</u>
2400 Support Services – Pupil Health				
100 Personnel Services – Salaries				
100 Personnel Services – Salaries				499,543.96
Total Personnel Services – Salaries				\$499,543.96
200 Personnel Services – Employee Benefits				
210 Group Insurance – Contracted Provider				637.20
220 Social Security Contributions				37,102.94
230 PSERS Retirement Contributions				147,800.20
260 Workers' Compensation				2,897.27
270 Group Insurance – Self-Insurance				81,853.89
Total Personnel Services – Employee Benefits				\$270,291.50
300 Purchased Professional and Technical Services				
324 Professional Educational Services – Employee Training and Development Services				904.00
330 Other Professional Services				3,039.00
340 Technical Services				1,077.86
Total Purchased Professional and Technical Services				\$5,020.86
400 Purchased Property Services				
430 Repairs and Maintenance Services				1,552.02
Total Purchased Property Services				\$1,552.02
500 Other Purchased Services				
580 Travel				299.74
Total Other Purchased Services				\$299.74
600 Supplies				
610 General Supplies				11,766.22
Total Supplies				\$11,766.22
Total 2400 Support Services – Pupil Health				\$788,474.30

General Fund (10)

2440 Nursing Services

	<u>Elementary</u>	<u>Secondary</u>	<u>Federal</u>	<u>Total</u>
100 Personnel Services – Salaries				
100 Personnel Services – Salaries				494,781.15
Total Personnel Services – Salaries				\$494,781.15
200 Personnel Services – Employee Benefits				
210 Group Insurance – Contracted Provider				637.20
220 Social Security Contributions				36,738.58
230 PSERS Retirement Contributions				147,800.20
260 Workers' Compensation				2,869.65
270 Group Insurance – Self-Insurance				81,853.89
Total Personnel Services – Employee Benefits				\$269,899.52
300 Purchased Professional and Technical Services				
324 Professional Educational Services – Employee Training and Development Services				904.00
330 Other Professional Services				3,039.00
340 Technical Services				1,077.86
Total Purchased Professional and Technical Services				\$5,020.86
400 Purchased Property Services				
430 Repairs and Maintenance Services				1,552.02
Total Purchased Property Services				\$1,552.02
500 Other Purchased Services				
580 Travel				299.74
Total Other Purchased Services				\$299.74
600 Supplies				
610 General Supplies				11,766.22
Total Supplies				\$11,766.22
Total 2440 Nursing Services				\$783,319.51

General Fund (10)

2450 Nonpublic Health Services

Elementary

Secondary

Federal

Total

100 Personnel Services – Salaries

100 Personnel Services – Salaries

4,762.81

Total Personnel Services – Salaries

\$4,762.81

200 Personnel Services – Employee Benefits

220 Social Security Contributions

364.36

260 Workers' Compensation

27.62

Total Personnel Services – Employee Benefits

\$391.98

Total 2450 Nonpublic Health Services

\$5,154.79

General Fund (10)

2500 Support Services – Business

Elementary Secondary Federal Total

100 Personnel Services – Salaries

100 Personnel Services – Salaries 469,632.83

Total Personnel Services – Salaries \$469,632.83

200 Personnel Services – Employee Benefits

210 Group Insurance – Contracted Provider 1,956.24

220 Social Security Contributions 35,032.13

230 PSERS Retirement Contributions 152,166.85

260 Workers' Compensation 2,447.27

270 Group Insurance – Self-Insurance 130,284.84

299 All Other Employee Benefits 3,000.00

Total Personnel Services – Employee Benefits \$324,887.33

300 Purchased Professional and Technical Services

324 Professional Educational Services – Employee Training and Development Services 2,598.30

330 Other Professional Services 11,363.83

Total Purchased Professional and Technical Services \$13,962.13

400 Purchased Property Services

430 Repairs and Maintenance Services 3,016.18

440 Rentals 1,423.04

Total Purchased Property Services \$4,439.22

500 Other Purchased Services

520 Insurance – General 100.00

549 Other Advertising/Public Relations 571.45

580 Travel 1,324.09

Total Other Purchased Services \$1,995.54

600 Supplies

610 General Supplies 5,468.96

630 Food 50.34

Total Supplies \$5,519.30

800 Other Objects

810 Dues and Fees 6,215.00

890 Miscellaneous Expenditures 20.00

Total Other Objects \$6,235.00

Total 2500 Support Services – Business \$826,671.35

General Fund (10)

2510 Fiscal Services

Elementary Secondary Federal Total

100 Personnel Services – Salaries				
100 Personnel Services – Salaries				321,144.06
Total Personnel Services – Salaries				\$321,144.06
200 Personnel Services – Employee Benefits				
210 Group Insurance – Contracted Provider				1,505.45
220 Social Security Contributions				23,822.57
230 PSERS Retirement Contributions				103,758.42
260 Workers' Compensation				1,591.02
270 Group Insurance – Self-Insurance				85,681.95
299 All Other Employee Benefits				3,000.00
Total Personnel Services – Employee Benefits				\$219,359.41
300 Purchased Professional and Technical Services				
324 Professional Educational Services – Employee Training and Development Services				2,448.30
330 Other Professional Services				6,000.00
Total Purchased Professional and Technical Services				\$8,448.30
500 Other Purchased Services				
580 Travel				1,273.62
Total Other Purchased Services				\$1,273.62
600 Supplies				
630 Food				12.63
Total Supplies				\$12.63
800 Other Objects				
810 Dues and Fees				755.00
Total Other Objects				\$755.00
Total 2510 Fiscal Services				\$550,993.02

General Fund (10)

	<u>Elementary</u>	<u>Secondary</u>	<u>Federal</u>	<u>Total</u>
2511 Supervision of Fiscal Services - Head of Component				
100 Personnel Services – Salaries				
100 Personnel Services – Salaries				106,620.94
Total Personnel Services – Salaries				\$106,620.94
200 Personnel Services – Employee Benefits				
210 Group Insurance – Contracted Provider				1,037.04
220 Social Security Contributions				8,148.46
230 PSERS Retirement Contributions				35,224.50
260 Workers' Compensation				630.31
270 Group Insurance – Self-Insurance				21,310.28
299 All Other Employee Benefits				3,000.00
Total Personnel Services – Employee Benefits				\$69,350.59
300 Purchased Professional and Technical Services				
324 Professional Educational Services – Employee Training and Development Services				1,619.55
Total Purchased Professional and Technical Services				\$1,619.55
500 Other Purchased Services				
580 Travel				1,133.37
Total Other Purchased Services				\$1,133.37
600 Supplies				
630 Food				12.63
Total Supplies				\$12.63
800 Other Objects				
810 Dues and Fees				640.00
Total Other Objects				\$640.00
Total 2511 Supervision of Fiscal Services - Head of Component				\$179,377.08

General Fund (10)

2514 Payroll Services

	<u>Elementary</u>	<u>Secondary</u>	<u>Federal</u>	<u>Total</u>
100 Personnel Services – Salaries				
100 Personnel Services – Salaries				49,050.51
Total Personnel Services – Salaries				\$49,050.51
200 Personnel Services – Employee Benefits				
210 Group Insurance – Contracted Provider				129.60
220 Social Security Contributions				3,675.84
230 PSERS Retirement Contributions				15,930.00
260 Workers' Compensation				283.76
270 Group Insurance – Self-Insurance				7,479.24
Total Personnel Services – Employee Benefits				\$27,498.44
300 Purchased Professional and Technical Services				
324 Professional Educational Services – Employee Training and Development Services				150.00
Total Purchased Professional and Technical Services				\$150.00
Total 2514 Payroll Services				\$76,698.95

General Fund (10)

2515 Financial Accounting Services

Elementary

Secondary

Federal

Total

100 Personnel Services – Salaries

100 Personnel Services – Salaries

109,044.73

Total Personnel Services – Salaries

\$109,044.73

200 Personnel Services – Employee Benefits

210 Group Insurance – Contracted Provider

250.85

220 Social Security Contributions

7,939.30

230 PSERS Retirement Contributions

34,690.48

260 Workers' Compensation

356.44

270 Group Insurance – Self-Insurance

42,151.59

Total Personnel Services – Employee Benefits

\$85,388.66

300 Purchased Professional and Technical Services

324 Professional Educational Services – Employee Training and Development Services

150.00

330 Other Professional Services

6,000.00

Total Purchased Professional and Technical Services

\$6,150.00

800 Other Objects

810 Dues and Fees

65.00

Total Other Objects

\$65.00

Total 2515 Financial Accounting Services

\$200,648.39

General Fund (10)

2516 Internal Auditing Services

Elementary

Secondary

Federal

Total

100 Personnel Services – Salaries

100 Personnel Services – Salaries

56,427.88

Total Personnel Services – Salaries

\$56,427.88

200 Personnel Services – Employee Benefits

210 Group Insurance – Contracted Provider

87.96

220 Social Security Contributions

4,058.97

230 PSERS Retirement Contributions

17,913.44

260 Workers' Compensation

320.51

270 Group Insurance – Self-Insurance

14,740.84

Total Personnel Services – Employee Benefits

\$37,121.72

300 Purchased Professional and Technical Services

324 Professional Educational Services – Employee Training and Development Services

528.75

Total Purchased Professional and Technical Services

\$528.75

500 Other Purchased Services

580 Travel

140.25

Total Other Purchased Services

\$140.25

800 Other Objects

810 Dues and Fees

50.00

Total Other Objects

\$50.00

Total 2516 Internal Auditing Services

\$94,268.60

General Fund (10)

2520 Purchasing Services

Elementary

Secondary

Federal

Total

100 Personnel Services – Salaries

100 Personnel Services – Salaries 35,969.73

Total Personnel Services – Salaries \$35,969.73

200 Personnel Services – Employee Benefits

210 Group Insurance – Contracted Provider 105.55

220 Social Security Contributions 2,765.67

230 PSERS Retirement Contributions 12,035.83

260 Workers' Compensation 202.98

270 Group Insurance – Self-Insurance 13,507.45

Total Personnel Services – Employee Benefits \$28,617.48

300 Purchased Professional and Technical Services

324 Professional Educational Services – Employee Training and Development Services 150.00

330 Other Professional Services 5,363.83

Total Purchased Professional and Technical Services \$5,513.83

400 Purchased Property Services

430 Repairs and Maintenance Services 3,016.18

440 Rentals 1,423.04

Total Purchased Property Services \$4,439.22

500 Other Purchased Services

520 Insurance – General 100.00

549 Other Advertising/Public Relations 571.45

580 Travel 50.47

Total Other Purchased Services \$721.92

600 Supplies

610 General Supplies 5,458.96

630 Food 37.71

Total Supplies \$5,496.67

800 Other Objects

810 Dues and Fees 5,460.00

890 Miscellaneous Expenditures 20.00

Total Other Objects \$5,480.00

Total 2520 Purchasing Services \$86,238.85

General Fund (10)

2530 Warehousing and Distributing Services

Elementary

Secondary

Federal

Total

100 Personnel Services – Salaries

100 Personnel Services – Salaries

71,902.73

Total Personnel Services – Salaries

\$71,902.73

200 Personnel Services – Employee Benefits

210 Group Insurance – Contracted Provider

240.12

220 Social Security Contributions

5,380.52

230 PSERS Retirement Contributions

23,171.90

260 Workers' Compensation

417.14

270 Group Insurance – Self-Insurance

23,616.20

Total Personnel Services – Employee Benefits

\$52,825.88

600 Supplies

610 General Supplies

10.00

Total Supplies

\$10.00

Total 2530 Warehousing and Distributing Services

\$124,738.61

General Fund (10)

2540 Printing, Publishing and Duplicating Services

Elementary

Secondary

Federal

Total

100 Personnel Services – Salaries

100 Personnel Services – Salaries

40,616.31

Total Personnel Services – Salaries

\$40,616.31

200 Personnel Services – Employee Benefits

210 Group Insurance – Contracted Provider

105.12

220 Social Security Contributions

3,063.37

230 PSERS Retirement Contributions

13,200.70

260 Workers' Compensation

236.13

270 Group Insurance – Self-Insurance

7,479.24

Total Personnel Services – Employee Benefits

\$24,084.56

Total 2540 Printing, Publishing and Duplicating Services

\$64,700.87

General Fund (10)

2600 Operation and Maintenance of Plant Services

Elementary Secondary Federal Total

100	<u>Personnel Services – Salaries</u>			
	100 Personnel Services – Salaries			2,471,502.54
Total Personnel Services – Salaries				\$2,471,502.54
200	<u>Personnel Services – Employee Benefits</u>			
	210 Group Insurance – Contracted Provider			9,534.89
	220 Social Security Contributions			183,635.09
	230 PSERS Retirement Contributions			791,980.16
	250 Unemployment Compensation			2,261.16
	260 Workers' Compensation			14,975.41
	270 Group Insurance – Self-Insurance			843,027.71
	280 Other Post-Employment Benefits (OPEB)			24,910.92
	299 All Other Employee Benefits			2,400.00
Total Personnel Services – Employee Benefits				\$1,872,725.34
300	<u>Purchased Professional and Technical Services</u>			
	324 Professional Educational Services – Employee Training and Development Services			9,959.60
	330 Other Professional Services			59,754.16
Total Purchased Professional and Technical Services				\$69,713.76
400	<u>Purchased Property Services</u>			
	410 Cleaning Services			124,701.12
	420 Utility Services			229,585.36
	430 Repairs and Maintenance Services			360,644.98
	440 Rentals			3,278.18
	460 Extermination Services			7,334.00
Total Purchased Property Services				\$725,543.64
500	<u>Other Purchased Services</u>			
	522 Automotive Liability Insurance			23,141.00
	523 General Property and Liability Insurance			193,935.00
	530 Communications			684.67
	580 Travel			878.32
	591 Services Purchased Locally			1,360.96
Total Other Purchased Services				\$219,999.95
600	<u>Supplies</u>			
	610 General Supplies	239,419.25	282,585.00	522,004.25
	620 Energy			1,379,967.03
Total Supplies				\$1,901,971.28
700	<u>Property</u>			
	752 Capital Equipment – Original and Additional			33,881.73
	762 Capitalized Equipment - Replacement			25,865.30
Total Property				\$59,747.03
800	<u>Other Objects</u>			
	810 Dues and Fees			9,860.00

General Fund (10)

2600 Operation and Maintenance of Plant Services

Elementary

Secondary

Federal

Total

Total Other Objects

\$9,860.00

Total 2600 Operation and Maintenance of Plant Services

\$239,419.25

\$282,585.00

\$7,331,063.54

General Fund (10)

	<u>Elementary</u>	<u>Secondary</u>	<u>Federal</u>	<u>Total</u>
2610 Supervision of Operation and Maintenance of Plant Services				
100 Personnel Services – Salaries				
100 Personnel Services – Salaries				225,400.37
Total Personnel Services – Salaries				\$225,400.37
200 Personnel Services – Employee Benefits				
210 Group Insurance – Contracted Provider				2,120.88
220 Social Security Contributions				16,989.59
230 PSERS Retirement Contributions				72,990.47
260 Workers' Compensation				1,305.92
270 Group Insurance – Self-Insurance				58,757.52
280 Other Post-Employment Benefits (OPEB)				6,982.32
299 All Other Employee Benefits				2,400.00
Total Personnel Services – Employee Benefits				\$161,546.70
300 Purchased Professional and Technical Services				
324 Professional Educational Services – Employee Training and Development Services				763.10
Total Purchased Professional and Technical Services				\$763.10
500 Other Purchased Services				
580 Travel				652.68
Total Other Purchased Services				\$652.68
800 Other Objects				
810 Dues and Fees				310.00
Total Other Objects				\$310.00
Total 2610 Supervision of Operation and Maintenance of Plant Services				\$388,672.85

General Fund (10)

2611 Supervision of Operation and Maintenance of Plant Services – Head of Component

Elementary Secondary Federal Total

100	<u>Personnel Services – Salaries</u>			
	100 Personnel Services – Salaries			156,062.29
Total Personnel Services – Salaries				\$156,062.29
200	<u>Personnel Services – Employee Benefits</u>			
	210 Group Insurance – Contracted Provider			1,147.32
	220 Social Security Contributions			11,725.56
	230 PSERS Retirement Contributions			50,681.74
	260 Workers' Compensation			906.28
	270 Group Insurance – Self-Insurance			37,447.24
	280 Other Post-Employment Benefits (OPEB)			6,982.32
	299 All Other Employee Benefits			1,200.00
Total Personnel Services – Employee Benefits				\$110,090.46
300	<u>Purchased Professional and Technical Services</u>			
	324 Professional Educational Services – Employee Training and Development Services			356.55
Total Purchased Professional and Technical Services				\$356.55
500	<u>Other Purchased Services</u>			
	580 Travel			326.34
Total Other Purchased Services				\$326.34
800	<u>Other Objects</u>			
	810 Dues and Fees			245.00
Total Other Objects				\$245.00
Total 2611 Supervision of Operation and Maintenance of Plant Services – Head of Component				\$267,080.64

General Fund (10)

2619 Supervision of Operation and Maintenance of Plant Services – All Other Supervision

Elementary

Secondary

Federal

Total

100 Personnel Services – Salaries				
100 Personnel Services – Salaries				69,338.08
Total Personnel Services – Salaries				\$69,338.08
200 Personnel Services – Employee Benefits				
210 Group Insurance – Contracted Provider				973.56
220 Social Security Contributions				5,264.03
230 PSERS Retirement Contributions				22,308.73
260 Workers' Compensation				399.64
270 Group Insurance – Self-Insurance				21,310.28
299 All Other Employee Benefits				1,200.00
Total Personnel Services – Employee Benefits				\$51,456.24
300 Purchased Professional and Technical Services				
324 Professional Educational Services – Employee Training and Development Services				406.55
Total Purchased Professional and Technical Services				\$406.55
500 Other Purchased Services				
580 Travel				326.34
Total Other Purchased Services				\$326.34
800 Other Objects				
810 Dues and Fees				65.00
Total Other Objects				\$65.00
Total 2619 Supervision of Operation and Maintenance of Plant Services – All Other Supervision				\$121,592.21

General Fund (10)

2620 Operation of Buildings Services

	<u>Elementary</u>	<u>Secondary</u>	<u>Federal</u>	<u>Total</u>
100 Personnel Services – Salaries				
100 Personnel Services – Salaries				1,881,898.00
Total Personnel Services – Salaries				\$1,881,898.00
200 Personnel Services – Employee Benefits				
210 Group Insurance – Contracted Provider				6,435.29
220 Social Security Contributions				139,586.86
230 PSERS Retirement Contributions				604,157.95
250 Unemployment Compensation				2,261.16
260 Workers' Compensation				11,450.37
270 Group Insurance – Self-Insurance				693,762.12
280 Other Post-Employment Benefits (OPEB)				17,928.60
Total Personnel Services – Employee Benefits				\$1,475,582.35
300 Purchased Professional and Technical Services				
324 Professional Educational Services – Employee Training and Development Services				336.50
330 Other Professional Services				21,620.24
Total Purchased Professional and Technical Services				\$21,956.74
400 Purchased Property Services				
410 Cleaning Services				119,890.62
420 Utility Services				229,585.36
430 Repairs and Maintenance Services				338,070.83
440 Rentals				3,278.18
460 Extermination Services				7,334.00
Total Purchased Property Services				\$698,158.99
500 Other Purchased Services				
522 Automotive Liability Insurance				23,141.00
523 General Property and Liability Insurance				193,935.00
530 Communications				684.67
580 Travel				225.64
591 Services Purchased Locally				1,360.96
Total Other Purchased Services				\$219,347.27
600 Supplies				
610 General Supplies	199,912.13	245,563.13		445,475.26
620 Energy				1,357,987.70
Total Supplies	\$199,912.13	\$245,563.13		\$1,803,462.96
700 Property				
752 Capital Equipment – Original and Additional				31,200.83
Total Property				\$31,200.83
800 Other Objects				
810 Dues and Fees				9,550.00
Total Other Objects				\$9,550.00
Total 2620 Operation of Buildings Services	\$199,912.13	\$245,563.13		\$6,141,157.14

General Fund (10)

	<u>Elementary</u>	<u>Secondary</u>	<u>Federal</u>	<u>Total</u>
2630 Care and Upkeep of Grounds Services				
100 Personnel Services – Salaries				
100 Personnel Services – Salaries				286,522.53
Total Personnel Services – Salaries				\$286,522.53
200 Personnel Services – Employee Benefits				
210 Group Insurance – Contracted Provider				878.16
220 Social Security Contributions				21,204.15
230 PSERS Retirement Contributions				90,984.91
260 Workers' Compensation				1,772.50
270 Group Insurance – Self-Insurance				83,028.83
Total Personnel Services – Employee Benefits				\$197,868.55
300 Purchased Professional and Technical Services				
324 Professional Educational Services – Employee Training and Development Services				410.00
Total Purchased Professional and Technical Services				\$410.00
400 Purchased Property Services				
410 Cleaning Services				4,810.50
430 Repairs and Maintenance Services				8,472.46
Total Purchased Property Services				\$13,282.96
600 Supplies				
610 General Supplies	36,337.16	34,085.19		70,422.35
Total Supplies	\$36,337.16	\$34,085.19		\$70,422.35
700 Property				
752 Capital Equipment – Original and Additional				2,680.90
762 Capitalized Equipment - Replacement				23,785.30
Total Property				\$26,466.20
Total 2630 Care and Upkeep of Grounds Services	\$36,337.16	\$34,085.19		\$594,972.59

General Fund (10)

	<u>Elementary</u>	<u>Secondary</u>	<u>Federal</u>	<u>Total</u>
2650 Vehicle Operation and Maintenance Services (Other Than Student Transportation Vehicles)				
400 Purchased Property Services				
430 Repairs and Maintenance Services				14,101.69
Total Purchased Property Services				\$14,101.69
600 Supplies				
610 General Supplies	3,169.96	2,936.68		6,106.64
620 Energy				21,979.33
Total Supplies	\$3,169.96	\$2,936.68		\$28,085.97
700 Property				
762 Capitalized Equipment - Replacement				2,080.00
Total Property				\$2,080.00
Total 2650 Vehicle Operation and Maintenance Services (Other Than Student Transportation Vehicles)	\$3,169.96	\$2,936.68		\$44,267.66

General Fund (10)

2660 Safety and Security Services

Elementary

Secondary

Federal

Total

100 Personnel Services – Salaries

100 Personnel Services – Salaries

77,681.64

Total Personnel Services – Salaries

\$77,681.64

200 Personnel Services – Employee Benefits

210 Group Insurance – Contracted Provider

100.56

220 Social Security Contributions

5,854.49

230 PSERS Retirement Contributions

23,846.83

260 Workers' Compensation

446.62

270 Group Insurance – Self-Insurance

7,479.24

Total Personnel Services – Employee Benefits

\$37,727.74

300 Purchased Professional and Technical Services

324 Professional Educational Services – Employee Training and Development Services

8,450.00

330 Other Professional Services

38,133.92

Total Purchased Professional and Technical Services

\$46,583.92

Total 2660 Safety and Security Services

\$161,993.30

General Fund (10)

2700 Student Transportation Services

	<u>Elementary</u>	<u>Secondary</u>	<u>Federal</u>	<u>Total</u>
100 Personnel Services – Salaries				
100 Personnel Services – Salaries			761.76	1,493,766.10
Total Personnel Services – Salaries			\$761.76	\$1,493,766.10
200 Personnel Services – Employee Benefits				
210 Group Insurance – Contracted Provider				1,112.66
220 Social Security Contributions			58.27	114,714.08
230 PSERS Retirement Contributions				411,096.90
250 Unemployment Compensation				2,113.59
260 Workers' Compensation				9,150.13
270 Group Insurance – Self-Insurance				64,323.69
280 Other Post-Employment Benefits (OPEB)				2,988.10
Total Personnel Services – Employee Benefits			\$58.27	\$605,499.15
300 Purchased Professional and Technical Services				
324 Professional Educational Services – Employee Training and Development Services				2,271.55
330 Other Professional Services				42,588.06
Total Purchased Professional and Technical Services				\$44,859.61
400 Purchased Property Services				
410 Cleaning Services				1,493.75
430 Repairs and Maintenance Services				92,851.97
Total Purchased Property Services				\$94,345.72
500 Other Purchased Services				
513 Contracted Carriers				196,764.46
516 Student Transportation Services From the IU				40,376.64
522 Automotive Liability Insurance				40,288.59
530 Communications				9,443.86
549 Other Advertising/Public Relations				337.70
580 Travel				118.53
Total Other Purchased Services				\$287,329.78
600 Supplies				
610 General Supplies				81,047.74
620 Energy			539.40	156,039.69
630 Food				142.03
Total Supplies			\$539.40	\$237,229.46
700 Property				
752 Capital Equipment – Original and Additional				(23,736.50)
Total Property				(\$23,736.50)
800 Other Objects				
810 Dues and Fees				7,351.13
Total Other Objects				\$7,351.13
Total 2700 Student Transportation Services			\$1,359.43	\$2,746,644.45

General Fund (10)

2710 Supervision of Student Transportation Services

Elementary

Secondary

Federal

Total

100 Personnel Services – Salaries

100 Personnel Services – Salaries

114,216.55

Total Personnel Services – Salaries

\$114,216.55

200 Personnel Services – Employee Benefits

210 Group Insurance – Contracted Provider

636.72

220 Social Security Contributions

8,802.25

230 PSERS Retirement Contributions

35,768.38

260 Workers' Compensation

638.43

270 Group Insurance – Self-Insurance

25,637.24

Total Personnel Services – Employee Benefits

\$71,483.02

300 Purchased Professional and Technical Services

324 Professional Educational Services – Employee Training and Development Services

2,271.55

330 Other Professional Services

25,485.74

Total Purchased Professional and Technical Services

\$27,757.29

400 Purchased Property Services

430 Repairs and Maintenance Services

1,921.81

Total Purchased Property Services

\$1,921.81

500 Other Purchased Services

580 Travel

114.58

Total Other Purchased Services

\$114.58

800 Other Objects

810 Dues and Fees

255.22

Total Other Objects

\$255.22

Total 2710 Supervision of Student Transportation Services

\$215,748.47

General Fund (10)

2719 Supervision of Student Transportation Services – All Other Supervision

Elementary

Secondary

Federal

Total

100 Personnel Services – Salaries				
100 Personnel Services – Salaries				114,216.55
Total Personnel Services – Salaries				\$114,216.55
200 Personnel Services – Employee Benefits				
210 Group Insurance – Contracted Provider				636.72
220 Social Security Contributions				8,802.25
230 PSERS Retirement Contributions				35,768.38
260 Workers' Compensation				638.43
270 Group Insurance – Self-Insurance				25,637.24
Total Personnel Services – Employee Benefits				\$71,483.02
300 Purchased Professional and Technical Services				
324 Professional Educational Services – Employee Training and Development Services				2,271.55
330 Other Professional Services				25,485.74
Total Purchased Professional and Technical Services				\$27,757.29
400 Purchased Property Services				
430 Repairs and Maintenance Services				1,921.81
Total Purchased Property Services				\$1,921.81
500 Other Purchased Services				
580 Travel				114.58
Total Other Purchased Services				\$114.58
800 Other Objects				
810 Dues and Fees				255.22
Total Other Objects				\$255.22
Total 2719 Supervision of Student Transportation Services – All Other Supervision				\$215,748.47

General Fund (10)

2720 Vehicle Operation Services

100 Personnel Services – Salaries

	<u>Elementary</u>	<u>Secondary</u>	<u>Federal</u>	<u>Total</u>
100 Personnel Services – Salaries			761.76	822,938.61
Total Personnel Services – Salaries			\$761.76	\$822,938.61

200 Personnel Services – Employee Benefits

210 Group Insurance – Contracted Provider				137.18
220 Social Security Contributions			58.27	63,015.94
230 PSERS Retirement Contributions				247,739.18
250 Unemployment Compensation				2,043.10
260 Workers' Compensation				5,227.53
270 Group Insurance – Self-Insurance				6,818.39
Total Personnel Services – Employee Benefits			\$58.27	\$324,981.32

300 Purchased Professional and Technical Services

330 Other Professional Services				4,101.71
Total Purchased Professional and Technical Services				\$4,101.71

500 Other Purchased Services

513 Contracted Carriers				192,948.46
516 Student Transportation Services From the IU				40,376.64
530 Communications				1,173.89
Total Other Purchased Services				\$234,498.99

600 Supplies

610 General Supplies				252.38
Total Supplies				\$252.38

800 Other Objects

810 Dues and Fees				(705.76)
Total Other Objects				(\$705.76)

Total 2720 Vehicle Operation Services			\$820.03	\$1,386,067.25
--	--	--	-----------------	-----------------------

General Fund (10)

2730 Monitoring Services

Elementary

Secondary

Federal

Total

100 Personnel Services – Salaries

100 Personnel Services – Salaries

150,924.96

Total Personnel Services – Salaries

\$150,924.96

200 Personnel Services – Employee Benefits

210 Group Insurance – Contracted Provider

90.58

220 Social Security Contributions

11,495.87

230 PSERS Retirement Contributions

41,987.20

260 Workers' Compensation

883.97

270 Group Insurance – Self-Insurance

14,883.45

Total Personnel Services – Employee Benefits

\$69,341.07

Total 2730 Monitoring Services

\$220,266.03

General Fund (10)

2740 Vehicle Servicing and Maintenance Services

Elementary Secondary Federal Total

100	<u>Personnel Services – Salaries</u>			
	100 Personnel Services – Salaries			116,295.87
Total Personnel Services – Salaries				\$116,295.87
200	<u>Personnel Services – Employee Benefits</u>			
	210 Group Insurance – Contracted Provider			211.07
	220 Social Security Contributions			9,246.46
	230 PSERS Retirement Contributions			35,531.56
	260 Workers' Compensation			705.60
	270 Group Insurance – Self-Insurance			14,839.41
	280 Other Post-Employment Benefits (OPEB)			2,888.45
Total Personnel Services – Employee Benefits				\$63,422.55
300	<u>Purchased Professional and Technical Services</u>			
	330 Other Professional Services			11,504.54
Total Purchased Professional and Technical Services				\$11,504.54
400	<u>Purchased Property Services</u>			
	410 Cleaning Services			1,443.93
	430 Repairs and Maintenance Services			87,833.55
Total Purchased Property Services				\$89,277.48
500	<u>Other Purchased Services</u>			
	522 Automotive Liability Insurance			38,944.97
	530 Communications			7,955.02
	549 Other Advertising/Public Relations			326.44
Total Other Purchased Services				\$47,226.43
600	<u>Supplies</u>			
	610 General Supplies			77,697.98
	620 Energy		539.40	150,835.77
	630 Food			137.29
Total Supplies				\$539.40 \$228,671.04
700	<u>Property</u>			
	752 Capital Equipment – Original and Additional			(22,944.89)
Total Property				(\$22,944.89)
800	<u>Other Objects</u>			
	810 Dues and Fees			7,556.51
Total Other Objects				\$7,556.51
Total 2740 Vehicle Servicing and Maintenance Services			\$539.40	\$541,009.53

General Fund (10)

2750 Nonpublic Transportation

Elementary Secondary Federal Total

100 Personnel Services – Salaries				
100 Personnel Services – Salaries				161,455.11
Total Personnel Services – Salaries				\$161,455.11
200 Personnel Services – Employee Benefits				
210 Group Insurance – Contracted Provider				37.11
220 Social Security Contributions				12,366.02
230 PSERS Retirement Contributions				50,070.58
250 Unemployment Compensation				70.49
260 Workers' Compensation				952.66
270 Group Insurance – Self-Insurance				2,145.20
280 Other Post-Employment Benefits (OPEB)				99.65
Total Personnel Services – Employee Benefits				\$65,741.71
300 Purchased Professional and Technical Services				
330 Other Professional Services				1,496.07
Total Purchased Professional and Technical Services				\$1,496.07
400 Purchased Property Services				
410 Cleaning Services				49.82
430 Repairs and Maintenance Services				3,096.61
Total Purchased Property Services				\$3,146.43
500 Other Purchased Services				
513 Contracted Carriers				3,816.00
522 Automotive Liability Insurance				1,343.62
530 Communications				314.95
549 Other Advertising/Public Relations				11.26
580 Travel				3.95
Total Other Purchased Services				\$5,489.78
600 Supplies				
610 General Supplies				2,702.94
620 Energy				5,203.92
630 Food				4.74
Total Supplies				\$7,911.60
700 Property				
752 Capital Equipment – Original and Additional				(791.61)
Total Property				(\$791.61)
800 Other Objects				
810 Dues and Fees				245.16
Total Other Objects				\$245.16
Total 2750 Nonpublic Transportation				\$244,694.25

General Fund (10)

2790 Other Student Transportation Services

Elementary

Secondary

Federal

Total

100 Personnel Services – Salaries

100 Personnel Services – Salaries

127,935.00

Total Personnel Services – Salaries

\$127,935.00

200 Personnel Services – Employee Benefits

220 Social Security Contributions

9,787.54

260 Workers' Compensation

741.94

Total Personnel Services – Employee Benefits

\$10,529.48

600 Supplies

610 General Supplies

394.44

Total Supplies

\$394.44

Total 2790 Other Student Transportation Services

\$138,858.92

General Fund (10)

2800 Support Services – Central

Elementary Secondary Federal Total

100	<u>Personnel Services – Salaries</u>			
	100 Personnel Services – Salaries			215,293.73
Total Personnel Services – Salaries				\$215,293.73
200	<u>Personnel Services – Employee Benefits</u>			
	210 Group Insurance – Contracted Provider			1,302.00
	220 Social Security Contributions			16,412.22
	230 PSERS Retirement Contributions			69,152.13
	240 Tuition Reimbursement			44,767.42
	260 Workers' Compensation			1,256.52
	270 Group Insurance – Self-Insurance			45,541.80
	299 All Other Employee Benefits			1,200.00
Total Personnel Services – Employee Benefits				\$179,632.09
300	<u>Purchased Professional and Technical Services</u>			
	324 Professional Educational Services – Employee Training and Development Services			250.00
	330 Other Professional Services			27,171.41
	340 Technical Services			113,595.40
Total Purchased Professional and Technical Services				\$141,016.81
400	<u>Purchased Property Services</u>			
	430 Repairs and Maintenance Services			1,433.01
	440 Rentals			1,495.00
Total Purchased Property Services				\$2,928.01
500	<u>Other Purchased Services</u>			
	549 Other Advertising/Public Relations			5,334.90
	580 Travel			17.28
	591 Services Purchased Locally			8,135.00
Total Other Purchased Services				\$13,487.18
600	<u>Supplies</u>			
	610 General Supplies			173.64
	630 Food			157.36
Total Supplies				\$331.00
800	<u>Other Objects</u>			
	810 Dues and Fees			1,355.25
Total Other Objects				\$1,355.25
Total 2800 Support Services – Central				\$554,044.07

General Fund (10)

2830 Staff Services

	<u>Elementary</u>	<u>Secondary</u>	<u>Federal</u>	<u>Total</u>
100 Personnel Services – Salaries				
100 Personnel Services – Salaries				215,293.73
Total Personnel Services – Salaries				\$215,293.73
200 Personnel Services – Employee Benefits				
210 Group Insurance – Contracted Provider				1,302.00
220 Social Security Contributions				16,412.22
230 PSERS Retirement Contributions				69,152.13
240 Tuition Reimbursement				44,767.42
260 Workers' Compensation				1,256.52
270 Group Insurance – Self-Insurance				45,541.80
299 All Other Employee Benefits				1,200.00
Total Personnel Services – Employee Benefits				\$179,632.09
300 Purchased Professional and Technical Services				
324 Professional Educational Services – Employee Training and Development Services				250.00
330 Other Professional Services				27,171.41
Total Purchased Professional and Technical Services				\$27,421.41
400 Purchased Property Services				
430 Repairs and Maintenance Services				1,433.01
440 Rentals				1,495.00
Total Purchased Property Services				\$2,928.01
500 Other Purchased Services				
549 Other Advertising/Public Relations				5,334.90
580 Travel				17.28
591 Services Purchased Locally				8,135.00
Total Other Purchased Services				\$13,487.18
600 Supplies				
610 General Supplies				173.64
630 Food				157.36
Total Supplies				\$331.00
800 Other Objects				
810 Dues and Fees				1,355.25
Total Other Objects				\$1,355.25
Total 2830 Staff Services				\$440,448.67

General Fund (10)

2831 Supervision of Staff Services

Elementary

Secondary

Federal

Total

100 Personnel Services – Salaries

100 Personnel Services – Salaries

113,537.98

Total Personnel Services – Salaries

\$113,537.98

200 Personnel Services – Employee Benefits

210 Group Insurance – Contracted Provider

1,042.80

220 Social Security Contributions

8,944.66

230 PSERS Retirement Contributions

36,408.27

260 Workers' Compensation

672.27

270 Group Insurance – Self-Insurance

1,985.48

299 All Other Employee Benefits

1,200.00

Total Personnel Services – Employee Benefits

\$50,253.48

Total 2831 Supervision of Staff Services

\$163,791.46

General Fund (10)

2833 Staff Accounting Services

	<u>Elementary</u>	<u>Secondary</u>	<u>Federal</u>	<u>Total</u>
100 Personnel Services – Salaries				
100 Personnel Services – Salaries				101,755.75
Total Personnel Services – Salaries				\$101,755.75
200 Personnel Services – Employee Benefits				
210 Group Insurance – Contracted Provider				259.20
220 Social Security Contributions				7,467.56
230 PSERS Retirement Contributions				32,743.86
260 Workers' Compensation				584.25
270 Group Insurance – Self-Insurance				43,556.32
Total Personnel Services – Employee Benefits				\$84,611.19
300 Purchased Professional and Technical Services				
324 Professional Educational Services – Employee Training and Development Services				250.00
330 Other Professional Services				27,171.41
Total Purchased Professional and Technical Services				\$27,421.41
400 Purchased Property Services				
430 Repairs and Maintenance Services				1,433.01
440 Rentals				1,495.00
Total Purchased Property Services				\$2,928.01
500 Other Purchased Services				
549 Other Advertising/Public Relations				5,334.90
580 Travel				17.28
Total Other Purchased Services				\$5,352.18
600 Supplies				
610 General Supplies				173.64
630 Food				157.36
Total Supplies				\$331.00
800 Other Objects				
810 Dues and Fees				1,355.25
Total Other Objects				\$1,355.25
Total 2833 Staff Accounting Services				\$223,754.79

General Fund (10)

2834 Staff Development Services – Non-Instructional, Certified Staff Only

Elementary

Secondary

Federal

Total

200 Personnel Services – Employee Benefits

240 Tuition Reimbursement

41,767.42

Total Personnel Services – Employee Benefits

\$41,767.42

Total 2834 Staff Development Services – Non-Instructional, Certified Staff Only

\$41,767.42

General Fund (10)

	<u>Elementary</u>	<u>Secondary</u>	<u>Federal</u>	<u>Total</u>
2836 Staff Development Services – Non-Instructional, Non-Certified Staff Only				
200 Personnel Services – Employee Benefits				
240 Tuition Reimbursement				3,000.00
Total Personnel Services – Employee Benefits				\$3,000.00
Total 2836 Staff Development Services – Non-Instructional, Non-Certified Staff Only				\$3,000.00

General Fund (10)

2839 Other Staff Services

Elementary

Secondary

Federal

Total

500 Other Purchased Services

591 Services Purchased Locally

8,135.00

Total Other Purchased Services

\$8,135.00

Total 2839 Other Staff Services

\$8,135.00

General Fund (10)

2840 Data Processing Services

Elementary

Secondary

Federal

Total

300 Purchased Professional and Technical Services

340 Technical Services

113,595.40

Total Purchased Professional and Technical Services

\$113,595.40

Total 2840 Data Processing Services

\$113,595.40

General Fund (10)

	<u>Elementary</u>	<u>Secondary</u>	<u>Federal</u>	<u>Total</u>
2900 Other Support Services				
400 Purchased Property Services				
440 Rentals				6,720.00
Total Purchased Property Services				\$6,720.00
500 Other Purchased Services				
530 Communications				101,592.78
595 IU Payments By Withholding				90,122.52
Total Other Purchased Services				\$191,715.30
Total 2900 Other Support Services				\$198,435.30

General Fund (10)

2910 Support Services Not Listed Elsewhere In the 2000 Series

Elementary

Secondary

Federal

Total

400 Purchased Property Services

440 Rentals 6,720.00

Total Purchased Property Services \$6,720.00

500 Other Purchased Services

530 Communications 101,592.78

595 IU Payments By Withholding 90,122.52

Total Other Purchased Services \$191,715.30

Total 2910 Support Services Not Listed Elsewhere In the 2000 Series \$198,435.30

General Fund (10)

3000 Operation of Non-Instructional Services

Total

100 Personnel Services – Salaries

100 Personnel Services – Salaries 1,318,048.67

Total Personnel Services – Salaries \$1,318,048.67

200 Personnel Services – Employee Benefits

210 Group Insurance – Contracted Provider 3,375.57

220 Social Security Contributions 99,806.19

230 PSERS Retirement Contributions 316,469.14

250 Unemployment Compensation 839.82

260 Workers’ Compensation 7,787.24

270 Group Insurance – Self-Insurance 102,260.32

280 Other Post-Employment Benefits (OPEB) 537.84

299 All Other Employee Benefits 1,200.00

Total Personnel Services – Employee Benefits \$532,276.12

300 Purchased Professional and Technical Services

324 Professional Educational Services – Employee Training and Development Services 3,481.00

330 Other Professional Services 134,158.13

350 Security / Safety Services 11,730.00

390 Other Purchased Professional and Technical Services 302.00

Total Purchased Professional and Technical Services \$149,671.13

400 Purchased Property Services

410 Cleaning Services 5,370.00

430 Repairs and Maintenance Services 10,317.51

440 Rentals 11,374.10

490 Other Purchased Property Services 8,590.37

Total Purchased Property Services \$35,651.98

500 Other Purchased Services

520 Insurance – General 28,730.81

580 Travel 30,825.62

591 Services Purchased Locally 12,426.49

Total Other Purchased Services \$71,982.92

600 Supplies

610 General Supplies 197,476.81

620 Energy 10,129.10

630 Food 27,980.25

640 Books and Periodicals 6,467.59

650 Supplies & Fees – Technology Related 1,489.17

Total Supplies \$243,542.92

700 Property

752 Capital Equipment – Original and Additional 11,970.41

762 Capitalized Equipment - Replacement 500.00

Total Property \$12,470.41

LEA : 114069103 Wilson SD

Printed 10/30/2018 9:36:15 AM

General Fund (10)

3000 Operation of Non-Instructional Services

Total

800 Other Objects

810 Dues and Fees

33,921.33

890 Miscellaneous Expenditures

12,735.97

Total Other Objects

\$46,657.30

Total 3000 Operation of Non-Instructional Services

\$2,410,301.45

General Fund (10)

3200 Student Activities

Elementary Secondary Federal Total

100 Personnel Services – Salaries

100 Personnel Services – Salaries 1,228,438.19

Total Personnel Services – Salaries \$1,228,438.19

200 Personnel Services – Employee Benefits

210 Group Insurance – Contracted Provider 3,375.57

220 Social Security Contributions 92,974.27

230 PSERS Retirement Contributions 309,186.21

250 Unemployment Compensation 839.82

260 Workers' Compensation 7,267.01

270 Group Insurance – Self-Insurance 102,260.32

280 Other Post-Employment Benefits (OPEB) 537.84

299 All Other Employee Benefits 1,200.00

Total Personnel Services – Employee Benefits \$517,641.04

300 Purchased Professional and Technical Services

324 Professional Educational Services – Employee Training and Development Services 2,966.00

330 Other Professional Services 129,329.83

350 Security / Safety Services 11,730.00

390 Other Purchased Professional and Technical Services 302.00

Total Purchased Professional and Technical Services \$144,327.83

400 Purchased Property Services

410 Cleaning Services 5,370.00

430 Repairs and Maintenance Services 10,317.51

440 Rentals 11,374.10

Total Purchased Property Services \$27,061.61

500 Other Purchased Services

520 Insurance – General 28,730.81

580 Travel 30,825.62

591 Services Purchased Locally 12,426.49

Total Other Purchased Services \$71,982.92

600 Supplies

610 General Supplies 185,610.75

620 Energy 10,129.10

630 Food 27,326.99

640 Books and Periodicals 764.72

650 Supplies & Fees – Technology Related 1,471.00

Total Supplies \$225,302.56

700 Property

752 Capital Equipment – Original and Additional 11,970.41

762 Capitalized Equipment - Replacement 500.00

Total Property \$12,470.41

800 Other Objects

LEA : 114069103 Wilson SD

Printed 10/30/2018 9:36:15 AM

General Fund (10)

3200 Student Activities

Elementary

Secondary

Federal

Total

800 Other Objects

810 Dues and Fees

33,188.50

890 Miscellaneous Expenditures

12,735.97

Total Other Objects

\$45,924.47

Total 3200 Student Activities

\$2,273,149.03

General Fund (10)

3300 Community Services

Elementary Secondary Federal Total

100 Personnel Services – Salaries

100 Personnel Services – Salaries 89,610.48

Total Personnel Services – Salaries \$89,610.48

200 Personnel Services – Employee Benefits

220 Social Security Contributions 6,831.92

230 PSERS Retirement Contributions 7,282.93

260 Workers' Compensation 520.23

Total Personnel Services – Employee Benefits \$14,635.08

300 Purchased Professional and Technical Services

324 Professional Educational Services – Employee Training and Development Services 515.00

330 Other Professional Services 1,750.00 4,828.30

Total Purchased Professional and Technical Services \$1,750.00 \$5,343.30

400 Purchased Property Services

490 Other Purchased Property Services 8,590.37

Total Purchased Property Services \$8,590.37

600 Supplies

610 General Supplies 304.42 11,866.06

630 Food 538.71 653.26

640 Books and Periodicals 5,702.87 5,702.87

650 Supplies & Fees – Technology Related 18.17

Total Supplies \$6,546.00 \$18,240.36

800 Other Objects

810 Dues and Fees 732.83

Total Other Objects \$732.83

Total 3300 Community Services \$8,296.00 \$137,152.42

General Fund (10)

5000 Other Expenditures and Financing Uses

Total

800 Other Objects

880 Refunds of Prior Years' Receipts

14,866.00

Total Other Objects

\$14,866.00

900 Other Uses of Funds

930 Fund Transfers

11,720,132.65

932 Capital Reserve Fund Transfers Applicable To Fund 32

1,000,000.00

Total Other Uses of Funds

\$12,720,132.65

Total 5000 Other Expenditures and Financing Uses

\$12,734,998.65

General Fund (10)

5100 Debt Service / Other Expenditures and Financing Uses	<u>Elementary</u>	<u>Secondary</u>	<u>Federal</u>	<u>Total</u>
800 <u>Other Objects</u>				
880 Refunds of Prior Years' Receipts				14,866.00
Total Other Objects				\$14,866.00
Total 5100 Debt Service / Other Expenditures and Financing Uses				\$14,866.00

General Fund (10)

5130 Refund of Prior Year Revenues / Receipts

Elementary

Secondary

Federal

Total

800 Other Objects

880 Refunds of Prior Years' Receipts

14,866.00

Total Other Objects

\$14,866.00

Total 5130 Refund of Prior Year Revenues / Receipts

\$14,866.00

General Fund (10)

5200 Interfund Transfers – Out

Elementary

Secondary

Federal

Total

900 Other Uses of Funds

930 Fund Transfers

11,720,132.65

932 Capital Reserve Fund Transfers Applicable To Fund 32

1,000,000.00

Total Other Uses of Funds

\$12,720,132.65

Total 5200 Interfund Transfers – Out

\$12,720,132.65

General Fund (10)

5230 Capital Projects Fund Transfers

Elementary

Secondary

Federal

Total

900 Other Uses of Funds

932 Capital Reserve Fund Transfers Applicable To Fund 32

1,000,000.00

Total Other Uses of Funds

\$1,000,000.00

Total 5230 Capital Projects Fund Transfers

\$1,000,000.00

General Fund (10)

5240 Debt Service Fund Transfers

Elementary

Secondary

Federal

Total

900 Other Uses of Funds

930 Fund Transfers

11,720,132.65

Total Other Uses of Funds

\$11,720,132.65

Total 5240 Debt Service Fund Transfers

\$11,720,132.65

Capital Reserve Fund - § 1431 (32)

2000 Support Services

700 Property

762 Capitalized Equipment - Replacement

Total

444,563.25

Total Property

\$444,563.25

Total 2000 Support Services

\$444,563.25

Capital Reserve Fund - § 1431 (32)

2600 Operation and Maintenance of Plant Services

Elementary

Secondary

Federal

Total

700 Property

762 Capitalized Equipment - Replacement

51,588.25

Total Property

\$51,588.25

Total 2600 Operation and Maintenance of Plant Services

\$51,588.25

LEA : 114069103 Wilson SD

Printed 10/30/2018 9:36:12 AM

Capital Reserve Fund - § 1431 (32)

2630 Care and Upkeep of Grounds Services

Elementary

Secondary

Federal

Total

700 Property

762 Capitalized Equipment - Replacement

51,588.25

Total Property

\$51,588.25

Total 2630 Care and Upkeep of Grounds Services

\$51,588.25

Capital Reserve Fund - § 1431 (32)

2700 Student Transportation Services

Elementary

Secondary

Federal

Total

700 Property

762 Capitalized Equipment - Replacement

392,975.00

Total Property

\$392,975.00

Total 2700 Student Transportation Services

\$392,975.00

Capital Reserve Fund - § 1431 (32)

2740 Vehicle Servicing and Maintenance Services

Elementary

Secondary

Federal

Total

700 Property

762 Capitalized Equipment - Replacement

392,975.00

Total Property

\$392,975.00

Total 2740 Vehicle Servicing and Maintenance Services

\$392,975.00

Capital Reserve Fund - § 1431 (32)

4000 Facilities Acquisition, Construction and Improvement Services

Total

300 Purchased Professional and Technical Services

330 Other Professional Services

1,576,068.44

Total Purchased Professional and Technical Services

\$1,576,068.44

500 Other Purchased Services

549 Other Advertising/Public Relations

3,941.43

Total Other Purchased Services

\$3,941.43

Total 4000 Facilities Acquisition, Construction and Improvement Services

\$1,580,009.87

Capital Reserve Fund - § 1431 (32)

4400 Architecture and Engineering Services / Educational Specifications – Improvements

Elementary

Secondary

Federal

Total

300 Purchased Professional and Technical Services

330 Other Professional Services

13,314.90

Total Purchased Professional and Technical Services

\$13,314.90

Total 4400 Architecture and Engineering Services / Educational Specifications – Improvements

\$13,314.90

Capital Reserve Fund - § 1431 (32)

4600 Existing Building Improvement Services

Elementary

Secondary

Federal

Total

300 Purchased Professional and Technical Services

330 Other Professional Services

1,562,753.54

Total Purchased Professional and Technical Services

\$1,562,753.54

500 Other Purchased Services

549 Other Advertising/Public Relations

3,941.43

Total Other Purchased Services

\$3,941.43

Total 4600 Existing Building Improvement Services

\$1,566,694.97

Other Capital Projects Fund (39)

2000 Support Services

300 Purchased Professional and Technical Services

330 Other Professional Services	215,465.25
Total Purchased Professional and Technical Services	\$215,465.25
Total 2000 Support Services	\$215,465.25

Other Capital Projects Fund (39)

2300 Support Services – Administration

Elementary

Secondary

Federal

Total

300 Purchased Professional and Technical Services

330 Other Professional Services

215,465.25

Total Purchased Professional and Technical Services

\$215,465.25

Total 2300 Support Services – Administration

\$215,465.25

Other Capital Projects Fund (39)

2390 Other Administration Services

Elementary

Secondary

Federal

Total

300 Purchased Professional and Technical Services

330 Other Professional Services

215,465.25

Total Purchased Professional and Technical Services

\$215,465.25

Total 2390 Other Administration Services

\$215,465.25

Other Capital Projects Fund (39)

4000 Facilities Acquisition, Construction and Improvement Services

Total

300 Purchased Professional and Technical Services

330 Other Professional Services

662,917.00

Total Purchased Professional and Technical Services

\$662,917.00

Total 4000 Facilities Acquisition, Construction and Improvement Services

\$662,917.00

Other Capital Projects Fund (39)

4600 Existing Building Improvement Services

Elementary

Secondary

Federal

Total

300 Purchased Professional and Technical Services

330 Other Professional Services

662,917.00

Total Purchased Professional and Technical Services

\$662,917.00

Total 4600 Existing Building Improvement Services

\$662,917.00

Debt Service Fund (40)

5000 Other Expenditures and Financing Uses

Total

800 Other Objects

830 Interest 2,640,132.73

Total Other Objects \$2,640,132.73

900 Other Uses of Funds

910 Redemption of Principal 16,721,255.50

Total Other Uses of Funds \$16,721,255.50

Total 5000 Other Expenditures and Financing Uses \$19,361,388.23

Debt Service Fund (40)

5100 Debt Service / Other Expenditures and Financing Uses

Elementary

Secondary

Federal

Total

800 Other Objects

830 Interest 2,640,132.73

Total Other Objects \$2,640,132.73

900 Other Uses of Funds

910 Redemption of Principal 16,721,255.50

Total Other Uses of Funds \$16,721,255.50

Total 5100 Debt Service / Other Expenditures and Financing Uses \$19,361,388.23

Debt Service Fund (40)

	<u>Elementary</u>	<u>Secondary</u>	<u>Federal</u>	<u>Total</u>
5110 Debt Service				
800 Other Objects				
830 Interest				2,640,132.73
Total Other Objects				\$2,640,132.73
900 Other Uses of Funds				
910 Redemption of Principal				9,105,000.00
Total Other Uses of Funds				\$9,105,000.00
Total 5110 Debt Service				\$11,745,132.73

Debt Service Fund (40)

5120 Debt Service – Refunded Bonds

Elementary

Secondary

Federal

Total

900 Other Uses of Funds

910 Redemption of Principal

7,616,255.50

Total Other Uses of Funds

\$7,616,255.50

Total 5120 Debt Service – Refunded Bonds

\$7,616,255.50

	<u>General Fund(10)</u>	<u>Public Purpose Trust(27)</u>	<u>Other Compt Approved (28)</u>	<u>Athletic / Activity(29)</u>	<u>Capital Reserve (690, 1850)(31)</u>
1000 Instruction					
1100 Regular Programs - Elementary / Secondary	40,391,219.17				
1200 Special Programs - Elementary / Secondary	15,196,783.21				
1300 Vocational Education	2,783,907.74				
1400 Other Instructional Programs - Elementary / Secondary	281,806.80				
1500 Nonpublic School Programs	18,544.00				
Total Instruction	\$58,672,260.92				
2000 Support Services					
2100 Support Services - Students	3,439,623.88				
2200 Support Services - Instructional Staff	5,681,900.87				
2300 Support Services - Administration	5,231,334.46				
2400 Support Services - Pupil Health	788,474.30				
2500 Support Services - Business	826,671.35				
2600 Operation and Maintenance of Plant Services	7,331,063.54				
2700 Student Transportation Services	2,746,644.45				
2800 Support Services - Central	554,044.07				
2900 Other Support Services	198,435.30				
Total Support Services	\$26,798,192.22				
3000 Operation of Non-Instructional Services					
3200 Student Activities	2,273,149.03				
3300 Community Services	137,152.42				
Total Operation of Non-Instructional Services	\$2,410,301.45				
4000 Facilities Acquisition, Construction and Improvement Services					
4400 Architecture and Engineering Services / Educational Specifications - Improvements					
4600 Existing Building Improvement Services					
Total Facilities Acquisition, Construction and Improvement Services					
5000 Other Expenditures and Financing Uses					
5100 Debt Service / Other Expenditures and Financing Uses	14,866.00				
5200 Interfund Transfers - Out	12,720,132.65				
Total Other Expenditures and Financing Uses	\$12,734,998.65				
TOTAL ACTUAL EXPENDITURES & OTHER FINANCING USES	\$100,615,753.24				

	<u>Capital Reserve (1431)(32)</u>	<u>Other Capital Projects Fund(39)</u>	<u>Debt Service(40)</u>	<u>Permanent(90)</u>	<u>Total</u>
1000 Instruction					
1100 Regular Programs - Elementary / Secondary					40,391,219.17
1200 Special Programs - Elementary / Secondary					15,196,783.21
1300 Vocational Education					2,783,907.74
1400 Other Instructional Programs - Elementary / Secondary					281,806.80
1500 Nonpublic School Programs					18,544.00
Total Instruction					\$58,672,260.92
2000 Support Services					
2100 Support Services - Students					3,439,623.88
2200 Support Services - Instructional Staff					5,681,900.87
2300 Support Services - Administration		215,465.25			5,446,799.71
2400 Support Services - Pupil Health					788,474.30
2500 Support Services - Business					826,671.35
2600 Operation and Maintenance of Plant Services	51,588.25				7,382,651.79
2700 Student Transportation Services	392,975.00				3,139,619.45
2800 Support Services - Central					554,044.07
2900 Other Support Services					198,435.30
Total Support Services	\$444,563.25	\$215,465.25			\$27,458,220.72
3000 Operation of Non-Instructional Services					
3200 Student Activities					2,273,149.03
3300 Community Services					137,152.42
Total Operation of Non-Instructional Services					\$2,410,301.45
4000 Facilities Acquisition, Construction and Improvement Services					
4400 Architecture and Engineering Services / Educational Specifications - Improvements	13,314.90				13,314.90
4600 Existing Building Improvement Services	1,566,694.97	662,917.00			2,229,611.97
Total Facilities Acquisition, Construction and Improvement Services	\$1,580,009.87	\$662,917.00			\$2,242,926.87
5000 Other Expenditures and Financing Uses					
5100 Debt Service / Other Expenditures and Financing Uses			19,361,388.23		19,376,254.23
5200 Interfund Transfers - Out					12,720,132.65
Total Other Expenditures and Financing Uses			\$19,361,388.23		\$32,096,386.88
TOTAL ACTUAL EXPENDITURES & OTHER FINANCING USES	\$2,024,573.12	\$878,382.25	\$19,361,388.23		\$122,880,096.84

PSERS Salary Data (Salary Data should relate to the General Fund only)

Amount Description	Amount
Total Salary Base for salaries subject to PSERS withholding	45,468,340.90
Total Federally Funded salaries subject to PSERS withholding	1,510,561.05
	<hr/>

Title I Expenditure Data

Amount Description	Amount
Expenditures Funded with Current Title I Funds	663,440.00
Expenditures Funded with Carry over Title I Funds	
Total Title I Expenditure Data	<hr/> \$663,440.00 <hr/>

Benefits for Staff Relative to Collective Bargaining Agreements

	OBJECT	COVERED	NOT COVERED	TOTAL
10 General Fund				
	211 Medical Insurance			
	212 Dental Insurance			
	215 Eye Care Insurance			
	216 Prescription Insurance			
	271 Self-Insurance Medical Benefits	6,144,596.14	1,972,622.29	8,117,218.43
	272 Self-Insurance Dental Benefits	272,058.87	92,669.39	364,728.26
	275 Self-Insurance Eye Care Benefits			
	276 Self-Insurance Prescription Benefits			
	FUND TOTAL	\$6,416,655.01	\$2,065,291.68	\$8,481,946.69
50 Enterprise Fund				
	211 Medical Insurance			
	212 Dental Insurance			
	215 Eye Care Insurance			
	216 Prescription Insurance			
	271 Self-Insurance Medical Benefits		219,948.27	219,948.27
	272 Self-Insurance Dental Benefits		10,219.08	10,219.08
	275 Self-Insurance Eye Care Benefits			
	276 Self-Insurance Prescription Benefits			
	FUND TOTAL		\$230,167.35	\$230,167.35
60 Internal Service Fund	No Self Insurance data to report			
	211 Medical Insurance			
	212 Dental Insurance			
	215 Eye Care Insurance			
	216 Prescription Insurance			
	271 Self-Insurance Medical Benefits			
	272 Self-Insurance Dental Benefits			
	275 Self-Insurance Eye Care Benefits			
	276 Self-Insurance Prescription Benefits			
	FUND TOTAL			
Total of All Funds		\$6,416,655.01	\$2,295,459.03	\$8,712,114.04

LEA : 114069103 Wilson SD

Printed 10/30/2018 9:36:29 AM

Function	Special Education (Prior Year)	Nonspecial Education (Prior Year)	Total (Prior Year)	Special Education (Current Year)	Nonspecial Education (Current Year)	Total (Current Year)
2120 Guidance Services	554,495.48	1,293,822.80	1,848,318.28	575,609.71	1,343,089.32	1,918,699.03
2140 Psychological Services	886,269.90		886,269.90	1,009,441.32		1,009,441.32
2150 Speech Pathology and Audiology Services						
2160 Social Work Services	120,151.08		120,151.08	122,546.60		122,546.60
2260 Instruction and Curriculum Development Services	605,657.19	682,128.94	1,287,786.13	691,995.82	526,255.85	1,218,251.67
2350 Legal and Accounting Services	80,910.12	194,900.72	275,810.84	87,174.84	273,974.96	361,149.80
2420 Medical Services						
2440 Nursing Services	116,958.66	662,765.74	779,724.40	117,497.93	665,821.58	783,319.51
2700 Student Transportation Services	1,113,112.37	1,777,871.00	2,890,983.37	1,213,416.82	1,533,227.63	2,746,644.45
Total	\$3,477,554.80	\$4,611,489.20	\$8,089,044.00	\$3,817,683.04	\$4,342,369.34	\$8,160,052.38

(PRINCIPAL AMOUNTS ONLY)

GOVERNMENTAL FUNDS/ ACTIVITIES

	Short-Term Borrowing	General Obligation Bonds/Notes	Authority Building Obligations	Other Long-Term Debt	Other Post-Employment Benefits (OPEB)	Compensated Absences	Net Pension Liability	Total
1. Debt at Beginning of Fiscal Year		76,790,000.00			12,093,355.00	1,307,707.00	157,687,470.00	247,878,532.00
2. Additional Debt Incurred During Year		8,523,382.00			4,126,339.00	238,151.00	1,437,738.00	14,325,610.00
3. Retirements and Repayments		16,395,000.00				216,874.00		16,611,874.00
4. Debt at End of Fiscal Year		68,918,382.00			16,219,694.00	1,328,984.00	159,125,208.00	245,592,268.00
5. Accreted Interest at End Of Fiscal Year								
6. Total Debt and Accreted Interest		68,918,382.00			16,219,694.00	1,328,984.00	159,125,208.00	245,592,268.00
7. Current Portion P&I - Due within 1 year		11,889,735.00				58,113.00		11,947,848.00
8. Interest Paid during current fiscal year		2,640,132.73						2,640,132.73

(PRINCIPAL AMOUNTS ONLY)

PROPRIETARY FUNDS

	Short-Term Borrowing	General Obligation Bonds/Notes	Authority Building Obligations	Other Long-Term Debt	Other Post-Employment Benefits (OPEB)	Compensated Absences	Net Pension Liability	Total
1. Debt at Beginning of Fiscal Year					375,213.00		5,651,530.00	6,026,743.00
2. Additional Debt Incurred During Year					197,436.00			197,436.00
3. Retirements and Repayments							16,738.00	16,738.00
4. Debt at End of Fiscal Year					572,649.00		5,634,792.00	6,207,441.00
5. Accreted Interest at End Of Fiscal Year								
6. Total Debt and Accreted Interest					572,649.00		5,634,792.00	6,207,441.00
7. Current Portion P&I - Due within 1 year								
8. Interest Paid during current fiscal year								

Total Principal and Interest Payments Made by Your School - All Funds

Function	Fund		Principal (910)	Principal (920)	Interest (830)	Total (Principal +Interest)	Misc Other Uses (990)
5110	10	General Fund					
5110	20	Special Revenue Funds					
5110	30	Capital Projects Funds					
5110	40	Debt Service Fund	9,105,000.00		2,640,132.73	11,745,132.73	
5110	90	Permanent Fund					
5120	10	General Fund					
5120	20	Special Revenue Funds					
5120	30	Capital Projects Funds					
5120	40	Debt Service Fund	7,616,255.50			7,616,255.50	
Total Debt Payments - Governmental Funds			\$16,721,255.50		\$2,640,132.73	\$19,361,388.23	

Function	Fund		Principal (910)	Principal (920)	Interest (830)	Total (Principal +Interest)
5110	50	Enterprise Fund				
5110	60	Internal Service Fund				
5120	50	Enterprise Fund				
5120	60	Internal Service Fund				
Total Debt Payments - Proprietary Funds						

Debt Details
Governmental Funds/ Activities

Debt Category	Debt Issue Date (MM/YYYY)	Principal Amounts Only			Debt at End of Fiscal Year	Current Portion Due Within One Year (Principal and Interest)	Interest Paid During Fiscal Year
		Debt at Beginning of Fiscal Year	Additions	Reductions / Repayments			
General Obligation Bonds/Notes – CIB	12/2017		4,975,000.00		4,975,000.00	169,482.00	
General Obligation Bonds/Notes – CIB	08/2017		2,670,000.00	1,330,000.00	1,340,000.00	1,360,770.00	29,314.37
General Obligation Bonds/Notes – CIB	08/2017		878,382.00	5,000.00	873,382.00	113,891.00	3,941.27
General Obligation Bonds/Notes – CIB	03/2016	9,245,000.00		5,000.00	9,240,000.00	286,505.00	281,547.50
General Obligation Bonds/Notes – CIB	03/2016	9,775,000.00		55,000.00	9,720,000.00	255,830.00	201,352.50
General Obligation Bonds/Notes – CIB	03/2016	5,435,000.00		5,000.00	5,430,000.00	220,360.00	215,410.00
General Obligation Bonds/Notes – CIB	01/2014	9,610,000.00		145,000.00	9,465,000.00	434,746.00	286,776.26
General Obligation Bonds/Notes – CIB	02/2013	11,040,000.00		5,085,000.00	5,955,000.00	678,338.00	327,837.50
General Obligation Bonds/Notes – CIB	02/2013	14,730,000.00		95,000.00	14,635,000.00	741,563.00	667,987.50
General Obligation Bonds/Notes – CIB	06/2012	14,310,000.00		7,025,000.00	7,285,000.00	7,628,250.00	603,750.00
General Obligation Bonds/Notes – CIB	04/2011	2,645,000.00		2,645,000.00			22,215.83
Compensated Absences		1,307,707.00	238,151.00	216,874.00	1,328,984.00	58,113.00	
Other Post-Employment Benefits (OPEB)		12,093,355.00	4,126,339.00		16,219,694.00		
Net Pension Liability		157,687,470.00	1,437,738.00		159,125,208.00		
Totals for Debt Entered:		\$247,878,532.00	\$14,325,610.00	\$16,611,874.00	\$245,592,268.00	\$11,947,848.00	\$2,640,132.73

Bond Details
Proprietary Funds

Debt Category	Debt Issue Date (MM/YYYY)	Principal Amounts Only			Debt at End of Fiscal Year	Current Portion Due Within One Year (Principal and Interest)	Interest Paid During Fiscal Year
		Debt at Beginning of Fiscal Year	Additions	Reductions / Repayments			
Other Post-Employment Benefits (OPEB)		375,213.00	197,436.00		572,649.00		
Net Pension Liability		5,651,530.00		16,738.00	5,634,792.00		
Totals for Debt Entered:		\$6,026,743.00	\$197,436.00	\$16,738.00	\$6,207,441.00		

General Fund (10)

Section 1: Tuition/Purchased Services as Reported within Expenditure Detail

	Amount
Tuition Reported in General Fund Expenditures 1000-560	4,818,686.06
Purchased Services in General Fund Expenditures 1000-594 and 1000-597	285.07
Section 1 Total	\$4,818,971.13

Section 2: Tuition Paid to Institution Types During Fiscal Year

	Tuition Paid For Nonspecial Education	Tuition Paid For Special Education	Total
1 1306 Institutions			
2 Institutionalized Children's Programs		285.07	285.07
3 Juveniles Incarcerated in Adult Facilities	1,810.90	19,842.47	21,653.37
4 Residential Treatment Facilities			
5 Other Local Education Agencies	13,598.21	216,123.51	229,721.72
6 Brick and Mortar Charter Schools	8,565.92	13,580.24	22,146.16
7 Cyber Charter Schools	432,989.00	252,364.18	685,353.18
8 Career and Technology Centers	1,297,343.14	55,936.16	1,353,279.30
9 Approved Private Schools		56,331.49	56,331.49
10 PA Chartered Schools for the Deaf and Blind		40,779.08	40,779.08
11 Private Residential Rehabilitative Institutions	10,764.43	61,342.78	72,107.21
12 Juvenile Detention Centers			
13 Special Program Jointures			
14 Other Tuition Not Included Elsewhere In This Section	171,871.47	2,165,443.08	2,337,314.55
Section 2 Total	\$1,936,943.07	\$2,882,028.06	\$4,818,971.13

1 .	<u>Student Transportation Services for Educational Field Trips</u>	113,114.98
2 .	<u>Student Transportation Services for Student Activities</u>	153,763.35
3 .	<u>Rental of Vehicles for Student Transportation Services</u>	
4 .	<u>Capital Reserve Funds</u>	392,975.00

Include only district-owned transportation expenditures paid from State or local money.
 DO NOT include federal expenditures or payments to contract service providers.
 Contracted transportation services should not be recorded on this schedule.

Food Service / Cafeteria Operations Fund (51)

3000 Operation of Non-Instructional Services

Total

100 Personnel Services – Salaries

100 Personnel Services – Salaries 1,018,138.00

Total Personnel Services – Salaries \$1,018,138.00

200 Personnel Services – Employee Benefits

210 Group Insurance – Contracted Provider 1,359.00

220 Social Security Contributions 77,761.00

230 PSERS Retirement Contributions 305,606.00

260 Workers’ Compensation 5,919.00

270 Group Insurance – Self-Insurance 97,792.00

280 Other Post-Employment Benefits (OPEB) 5,430.00

299 All Other Employee Benefits 800.00

Total Personnel Services – Employee Benefits \$494,667.00

300 Purchased Professional and Technical Services

324 Professional Educational Services – Employee Training and Development Services 6,048.00

330 Other Professional Services 4,875.00

Total Purchased Professional and Technical Services \$10,923.00

400 Purchased Property Services

430 Repairs and Maintenance Services 34,464.00

440 Rentals 1,404.00

Total Purchased Property Services \$35,868.00

500 Other Purchased Services

530 Communications 643.00

540 Advertising 2,794.00

570 Food Service Management 38,400.00

580 Travel 150.00

Total Other Purchased Services \$41,987.00

600 Supplies

610 General Supplies 63,048.00

630 Food 1,182,889.00

650 Supplies & Fees – Technology Related 7,242.00

Total Supplies \$1,253,179.00

700 Property

740 Depreciation 18,302.00

Total Property \$18,302.00

800 Other Objects

810 Dues and Fees 1,219.00

Total Other Objects \$1,219.00

Total 3000 Operation of Non-Instructional Services \$2,874,283.00

Food Service / Cafeteria Operations Fund (51)

3100 Food Services

Elementary Secondary Federal Total

100 Personnel Services – Salaries				
100 Personnel Services – Salaries				1,018,138.00
Total Personnel Services – Salaries				\$1,018,138.00
200 Personnel Services – Employee Benefits				
210 Group Insurance – Contracted Provider				1,359.00
220 Social Security Contributions				77,761.00
230 PSERS Retirement Contributions				305,606.00
260 Workers' Compensation				5,919.00
270 Group Insurance – Self-Insurance				97,792.00
280 Other Post-Employment Benefits (OPEB)				5,430.00
299 All Other Employee Benefits				800.00
Total Personnel Services – Employee Benefits				\$494,667.00
300 Purchased Professional and Technical Services				
324 Professional Educational Services – Employee Training and Development Services				6,048.00
330 Other Professional Services				4,875.00
Total Purchased Professional and Technical Services				\$10,923.00
400 Purchased Property Services				
430 Repairs and Maintenance Services				34,464.00
440 Rentals				1,404.00
Total Purchased Property Services				\$35,868.00
500 Other Purchased Services				
530 Communications				643.00
540 Advertising				2,794.00
570 Food Service Management				38,400.00
580 Travel				150.00
Total Other Purchased Services				\$41,987.00
600 Supplies				
610 General Supplies				63,048.00
630 Food				1,182,889.00
650 Supplies & Fees – Technology Related				7,242.00
Total Supplies				\$1,253,179.00
700 Property				
740 Depreciation				18,302.00
Total Property				\$18,302.00
800 Other Objects				
810 Dues and Fees				1,219.00
Total Other Objects				\$1,219.00
Total 3100 Food Services				\$2,874,283.00

Food Service / Cafeteria Operations Fund (51)

5000 Other Expenditures and Financing Uses

Total

900 Other Uses of Funds

939 Other Fund Transfers

46,753.25

Total Other Uses of Funds

\$46,753.25

Total 5000 Other Expenditures and Financing Uses

\$46,753.25

Food Service / Cafeteria Operations Fund (51)

5200 Interfund Transfers – Out

Elementary

Secondary

Federal

Total

900 Other Uses of Funds

939 Other Fund Transfers

46,753.25

Total Other Uses of Funds

\$46,753.25

Total 5200 Interfund Transfers – Out

\$46,753.25

Food Service / Cafeteria Operations Fund (51)

	<u>Elementary</u>	<u>Secondary</u>	<u>Federal</u>	<u>Total</u>
5210 General Fund Transfers				
900 Other Uses of Funds				
939 Other Fund Transfers				46,753.25
Total Other Uses of Funds				\$46,753.25
Total 5210 General Fund Transfers				\$46,753.25

Child Care Operations Fund (52)

2000 Support Services

100 Personnel Services – Salaries

100 Personnel Services – Salaries 3,570.00

Total Personnel Services – Salaries \$3,570.00

200 Personnel Services – Employee Benefits

220 Social Security Contributions 273.00

230 PSERS Retirement Contributions 30.00

260 Workers' Compensation 21.00

280 Other Post-Employment Benefits (OPEB) (30.00)

Total Personnel Services – Employee Benefits \$294.00

400 Purchased Property Services

410 Cleaning Services 13,091.00

420 Utility Services 2,317.00

460 Extermination Services 436.00

Total Purchased Property Services \$15,844.00

600 Supplies

620 Energy 16,063.00

Total Supplies \$16,063.00

Total 2000 Support Services \$35,771.00

Child Care Operations Fund (52)

2600 Operation and Maintenance of Plant Services

Elementary

Secondary

Federal

Total

100 Personnel Services – Salaries

100 Personnel Services – Salaries

3,570.00

Total Personnel Services – Salaries

\$3,570.00

200 Personnel Services – Employee Benefits

220 Social Security Contributions

273.00

230 PSERS Retirement Contributions

30.00

260 Workers' Compensation

21.00

280 Other Post-Employment Benefits (OPEB)

(30.00)

Total Personnel Services – Employee Benefits

\$294.00

400 Purchased Property Services

410 Cleaning Services

13,091.00

420 Utility Services

2,317.00

460 Extermination Services

436.00

Total Purchased Property Services

\$15,844.00

600 Supplies

620 Energy

16,063.00

Total Supplies

\$16,063.00

Total 2600 Operation and Maintenance of Plant Services

\$35,771.00

Child Care Operations Fund (52)

	<u>Elementary</u>	<u>Secondary</u>	<u>Federal</u>	<u>Total</u>
2620 Operation of Buildings Services				
100 Personnel Services – Salaries				
100 Personnel Services – Salaries				3,570.00
Total Personnel Services – Salaries				\$3,570.00
200 Personnel Services – Employee Benefits				
220 Social Security Contributions				273.00
230 PSERS Retirement Contributions				30.00
260 Workers’ Compensation				21.00
280 Other Post-Employment Benefits (OPEB)				(30.00)
Total Personnel Services – Employee Benefits				\$294.00
400 Purchased Property Services				
410 Cleaning Services				1,517.00
420 Utility Services				2,317.00
460 Extermination Services				436.00
Total Purchased Property Services				\$4,270.00
600 Supplies				
620 Energy				16,063.00
Total Supplies				\$16,063.00
Total 2620 Operation of Buildings Services				\$24,197.00

Child Care Operations Fund (52)

2630 Care and Upkeep of Grounds Services

Elementary

Secondary

Federal

Total

400 Purchased Property Services

410 Cleaning Services

11,574.00

Total Purchased Property Services

\$11,574.00

Total 2630 Care and Upkeep of Grounds Services

\$11,574.00

LEA : 114069103 Wilson SD

Printed 10/30/2018 9:36:36 AM

Page - 1 of 2

Child Care Operations Fund (52)**3000 Operation of Non-Instructional Services****Total****100 Personnel Services – Salaries**

100 Personnel Services – Salaries 714,868.00

Total Personnel Services – Salaries**\$714,868.00****200 Personnel Services – Employee Benefits**

210 Group Insurance – Contracted Provider 1,923.00

220 Social Security Contributions 54,055.00

230 PSERS Retirement Contributions 338,135.00

250 Unemployment Compensation 5,154.00

260 Workers' Compensation 4,021.00

270 Group Insurance – Self-Insurance 134,776.00

280 Other Post-Employment Benefits (OPEB) 25,134.00

299 All Other Employee Benefits 1,200.00

Total Personnel Services – Employee Benefits**\$564,398.00****300 Purchased Professional and Technical Services**

324 Professional Educational Services – Employee Training and Development Services 1,271.00

330 Other Professional Services 185.00

340 Technical Services 2,264.00

Total Purchased Professional and Technical Services**\$3,720.00****400 Purchased Property Services**

410 Cleaning Services 9,509.00

440 Rentals 5,181.00

Total Purchased Property Services**\$14,690.00****500 Other Purchased Services**

530 Communications 2,181.00

549 Other Advertising/Public Relations 4,257.00

580 Travel 154.00

599 Other Miscellaneous Purchased Services 1,628.00

Total Other Purchased Services**\$8,220.00****600 Supplies**

610 General Supplies 12,973.00

630 Food 21,849.00

640 Books and Periodicals 1,351.00

Total Supplies**\$36,173.00****700 Property**

740 Depreciation 35,584.00

Total Property**\$35,584.00****800 Other Objects**

810 Dues and Fees 56.00

890 Miscellaneous Expenditures 1,834.00

Total Other Objects**\$1,890.00****Total 3000 Operation of Non-Instructional Services****\$1,379,543.00**

Child Care Operations Fund (52)

3300 Community Services

Elementary Secondary Federal Total

100	<u>Personnel Services – Salaries</u>			
	100 Personnel Services – Salaries			714,868.00
Total Personnel Services – Salaries				\$714,868.00
200	<u>Personnel Services – Employee Benefits</u>			
	210 Group Insurance – Contracted Provider			1,923.00
	220 Social Security Contributions			54,055.00
	230 PSERS Retirement Contributions			338,135.00
	250 Unemployment Compensation			5,154.00
	260 Workers' Compensation			4,021.00
	270 Group Insurance – Self-Insurance			134,776.00
	280 Other Post-Employment Benefits (OPEB)			25,134.00
	299 All Other Employee Benefits			1,200.00
Total Personnel Services – Employee Benefits				\$564,398.00
300	<u>Purchased Professional and Technical Services</u>			
	324 Professional Educational Services – Employee Training and Development Services			1,271.00
	330 Other Professional Services			185.00
	340 Technical Services			2,264.00
Total Purchased Professional and Technical Services				\$3,720.00
400	<u>Purchased Property Services</u>			
	410 Cleaning Services			9,509.00
	440 Rentals			5,181.00
Total Purchased Property Services				\$14,690.00
500	<u>Other Purchased Services</u>			
	530 Communications			2,181.00
	549 Other Advertising/Public Relations			4,257.00
	580 Travel			154.00
	599 Other Miscellaneous Purchased Services			1,628.00
Total Other Purchased Services				\$8,220.00
600	<u>Supplies</u>			
	610 General Supplies			12,973.00
	630 Food			21,849.00
	640 Books and Periodicals			1,351.00
Total Supplies				\$36,173.00
700	<u>Property</u>			
	740 Depreciation			35,584.00
Total Property				\$35,584.00
800	<u>Other Objects</u>			
	810 Dues and Fees			56.00
	890 Miscellaneous Expenditures			1,834.00
Total Other Objects				\$1,890.00
Total 3300 Community Services				\$1,379,543.00

Child Care Operations Fund (52)

4000 Facilities Acquisition, Construction and Improvement Services

Total

400 Purchased Property Services

450 Construction Services

6,450.00

Total Purchased Property Services

\$6,450.00

Total 4000 Facilities Acquisition, Construction and Improvement Services

\$6,450.00

Child Care Operations Fund (52)

4600 Existing Building Improvement Services

Elementary

Secondary

Federal

Total

400 Purchased Property Services

450 Construction Services

6,450.00

Total Purchased Property Services

\$6,450.00

Total 4600 Existing Building Improvement Services

\$6,450.00

Child Care Operations Fund (52)

5000 Other Expenditures and Financing Uses

Total

900 Other Uses of Funds

939 Other Fund Transfers

164,439.00

Total Other Uses of Funds

\$164,439.00

Total 5000 Other Expenditures and Financing Uses

\$164,439.00

LEA : 114069103 Wilson SD

Printed 10/30/2018 9:36:39 AM

Child Care Operations Fund (52)

5200 Interfund Transfers – Out

Elementary

Secondary

Federal

Total

900 Other Uses of Funds

939 Other Fund Transfers

164,439.00

Total Other Uses of Funds

\$164,439.00

Total 5200 Interfund Transfers – Out

\$164,439.00

LEA : 114069103 Wilson SD

Printed 10/30/2018 9:36:39 AM

Child Care Operations Fund (52)

5210 General Fund Transfers

Elementary

Secondary

Federal

Total

900 Other Uses of Funds

939 Other Fund Transfers

164,439.00

Total Other Uses of Funds

\$164,439.00

Total 5210 General Fund Transfers

\$164,439.00

	<u>Food Service(51)</u>	<u>Child Care Operations(52)</u>	<u>Other Enterprise(58)</u>	<u>Internal Service(60)</u>	<u>Total</u>
2000 Support Services					
2600 Operation and Maintenance of Plant Services		35,771.00			35,771.00
Total Support Services		\$35,771.00			\$35,771.00
3000 Operation of Non-Instructional Services					
3100 Food Services	2,874,283.00				2,874,283.00
3300 Community Services		1,379,543.00			1,379,543.00
Total Operation of Non-Instructional Services	\$2,874,283.00	\$1,379,543.00			\$4,253,826.00
4000 Facilities Acquisition, Construction and Improvement Services					
4600 Existing Building Improvement Services		6,450.00			6,450.00
Total Facilities Acquisition, Construction and Improvement Services		\$6,450.00			\$6,450.00
5000 Other Expenditures and Financing Uses					
5200 Interfund Transfers - Out	46,753.25	164,439.00			211,192.25
Total Other Expenditures and Financing Uses	\$46,753.25	\$164,439.00			\$211,192.25
TOTAL ACTUAL EXPENDITURES & OTHER FINANCING USES	\$2,921,036.25	\$1,586,203.00			\$4,507,239.25