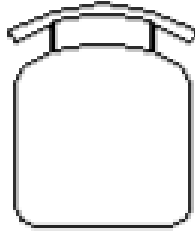
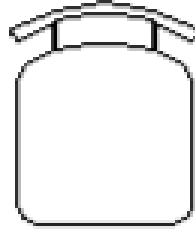


CABINET

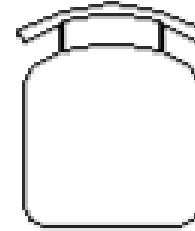
Director of
Human
Resources



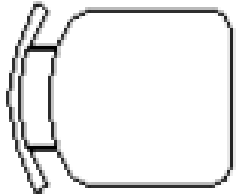
Director of
Pupil Services



Assistant
Superintendent for
Teaching & Learning



Chief Operating
Officer



*Lori
Lillis*

*Dr. Kate
Long*

*Dr. Cynthia
Mierzejewski*

Superintendent

*Margaret
Lindsey*

*Curt
Baker*

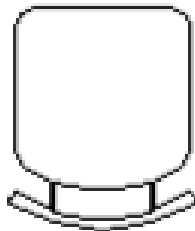
Chair

*Kristin
Kramer*

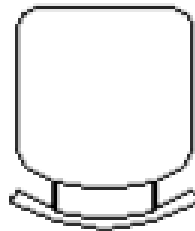
*Dr. Amy
Flannery*

*Christine
Schlosman*

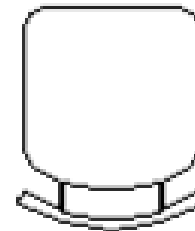
Director of Public
Information/ Exec Director,
Wilson Ed. Foundation



Director of
Curriculum

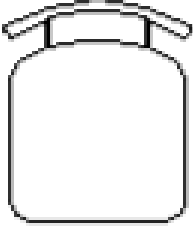


Chief Financial
Officer

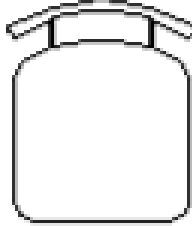


CORE ACADEMIC TEAM (“CAT”)

Director of
Assessment,
Data, and
Analysis



Director of
Pupil Services

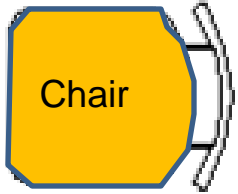


*Stacey
Stoudt*

*Dr. Kate
Long*

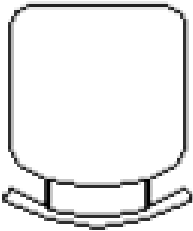
*Dr. Cynthia
Mierzejewski*

Assistant
Superintendent for
Teaching & Learning

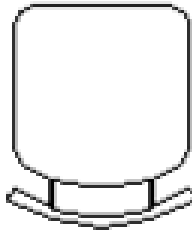


*Curt
Baker*

*Dr. Amy
Flannery*



Superintendent



Director of
Curriculum



Cabinet Member



Cabinet Member



Cabinet Member



Cabinet Member

Kristin Kramer
Director of Public Information/ Exec Director, Wilson Ed. Foundation

Dr. Kate Long
Director of Pupil Services

Dr. Amy Flannery
Director of Curriculum

Dr. Cynthia Mierzejewski
Assistant Superintendent for Teaching & Learning

Margaret Lindsey
Chief Operating Officer

Robert Johnson
School Resource Officer

Steve Good
Childcare Coordinator

Curt Baker
Superintendent

Stacey Stoudt
Director of Assessment, Data, and Analysis

Peggy Umbenhauer
Food Services Coordinator

Administrative Leadership Team

Lori Lillis
Director of Human Resources

Drew Kaufmann
Director of Athletics & Student Activities

Kyle Zeiber
Director of Plant Management

Christine Schlosman
Chief Financial Officer

Alline Smith
Transportation Coordinator



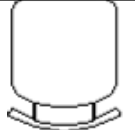
Cabinet Member



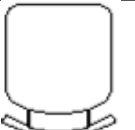
Chair



Cabinet Member



Cabinet Member



All Lead Principals

Assistant Principals at their discretion

Superintendent & Direct Reports

Wilson SD
School Board

Curt Baker
Superintendent

Dr. Cynthia Mierzejewski
Asst. Superintendent
for Teaching &
Learning

Lori Lillis
Director of
Human Resources

Kristin Kramer
Director of Public
Information / Exec.
Dir., Wilson Ed.
Foundation

PRINCIPALS

Chris Trickett
Wilson High School

Dr. Steve Burnham
Wilson Southern MS

Kyle Wetherhold
Wilson West MS

Beth Yeiser
Cornwall Terrace ES

Laura Morgan
Green Valley ES

Dr. Matt Flannery
Shiloh Hills ES

Dawn Hart
Spring Ridge ES

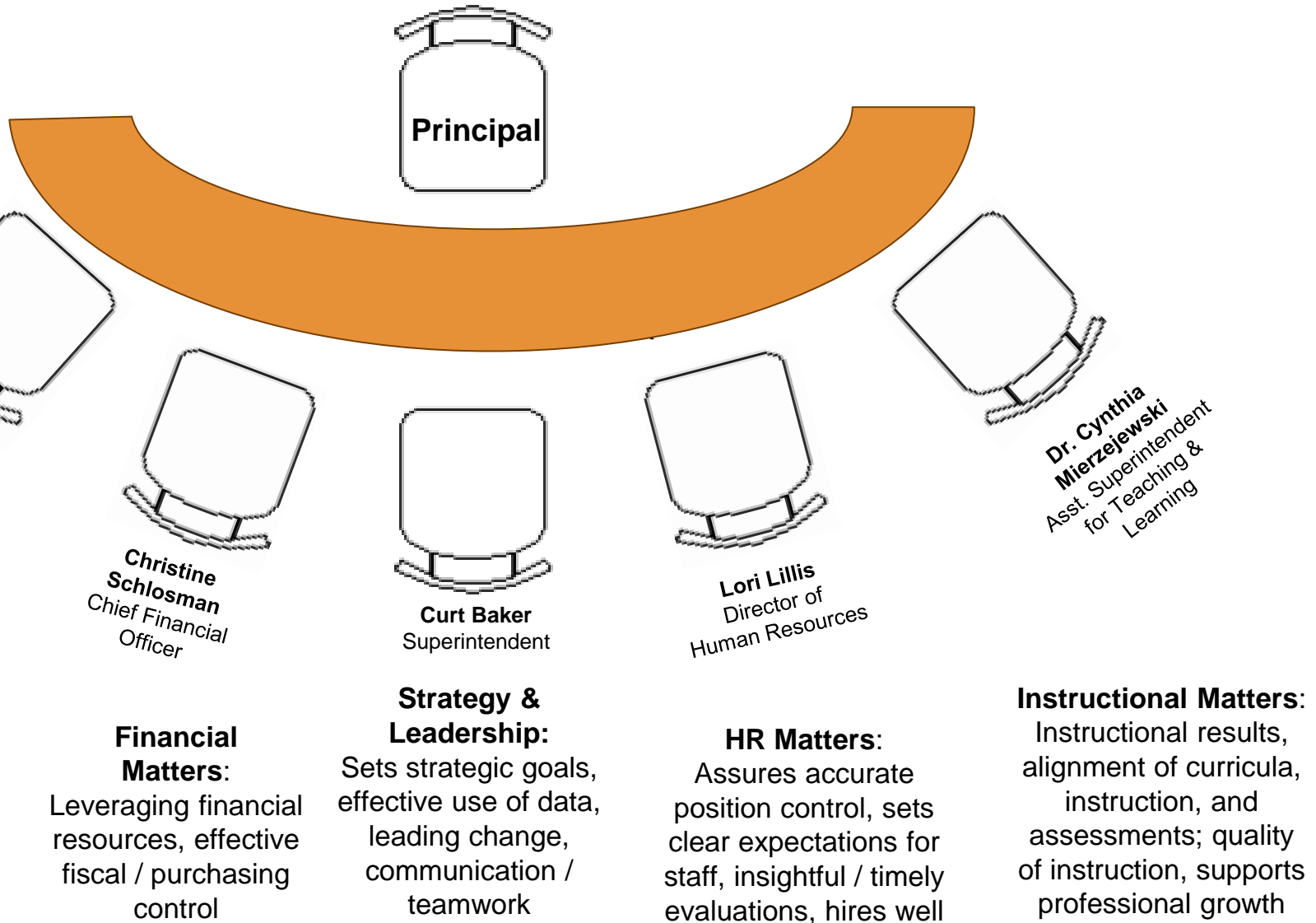
Dr. Krista Antonis
Whitfield ES

Christine Schlosman
Chief Financial
Officer

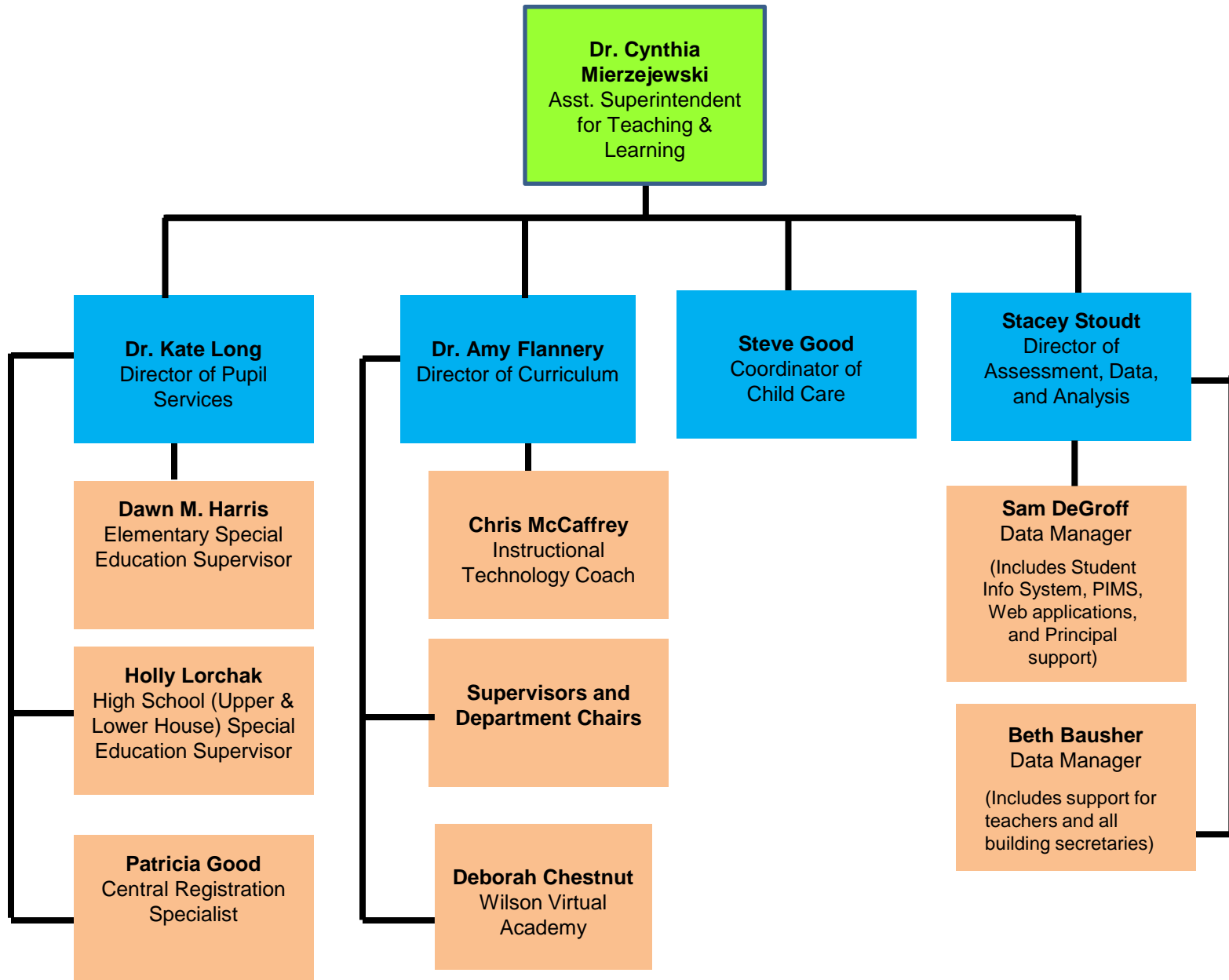
Margaret Lindsey
Chief Operating
Officer

Drew Kaufmann
Director of Athletics &
Student Activities

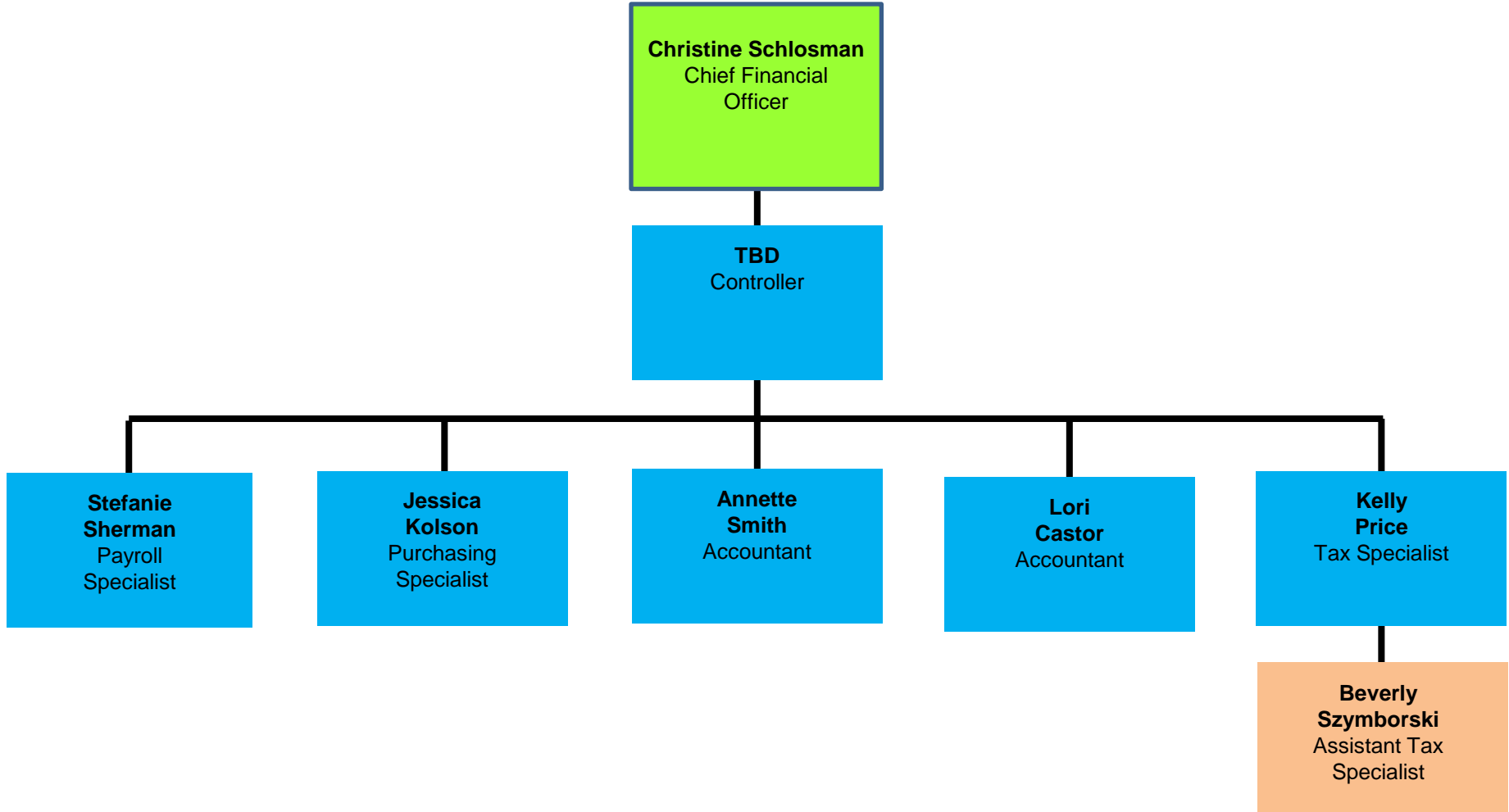
COLLABORATIVE PRINCIPAL EVALUATION



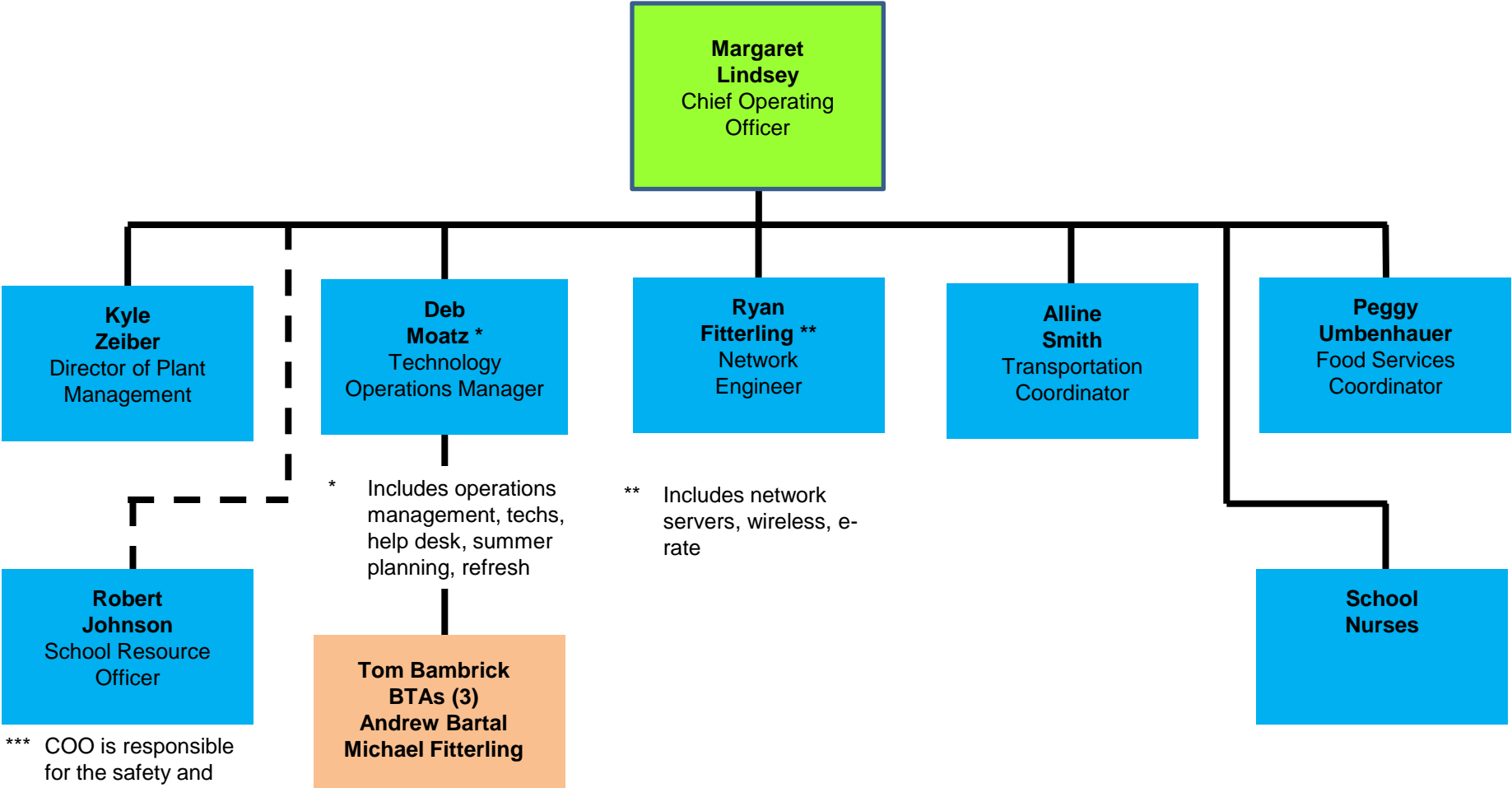
Instruction



Finance



Operations

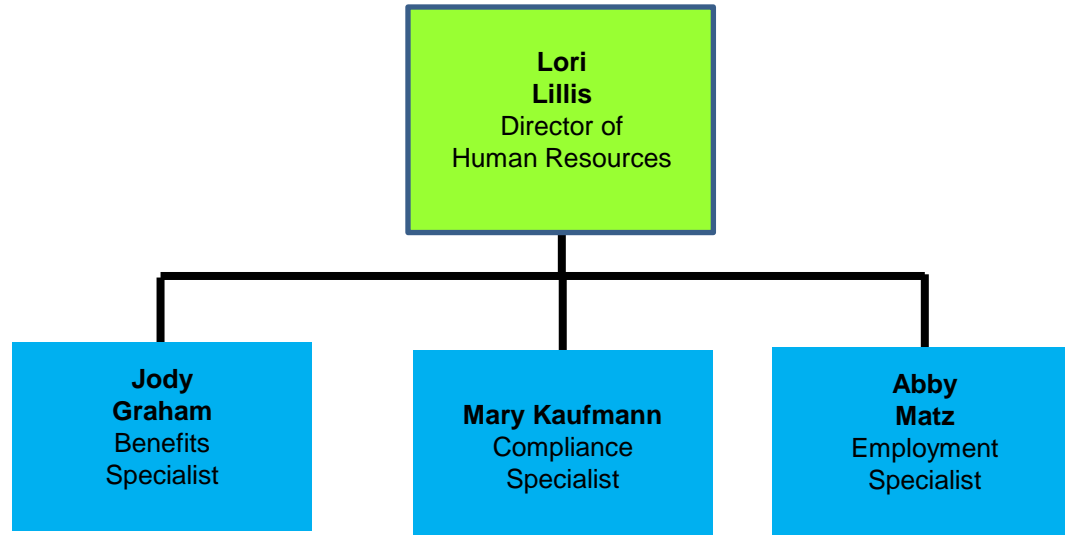


*** COO is responsible for the safety and security of our buildings, grounds, and transportation fleet

* Includes operations management, techs, help desk, summer planning, refresh

** Includes network servers, wireless, e-rate

Human Resources



Human Resources is accountable, among other things, for:

- (a) All Human Resources administration,
- (b) Benefits
- (c) The District's Employee Assistance Program,
- (d) Securing of both short and long term substitutes,
- (e) Position control within the District's Skyward software system
- (f) Licensure verification
- (g) Adherence to all Progressive discipline protocols
- (h) Integrity of the District's hiring practices

Athletics and Student Activities

